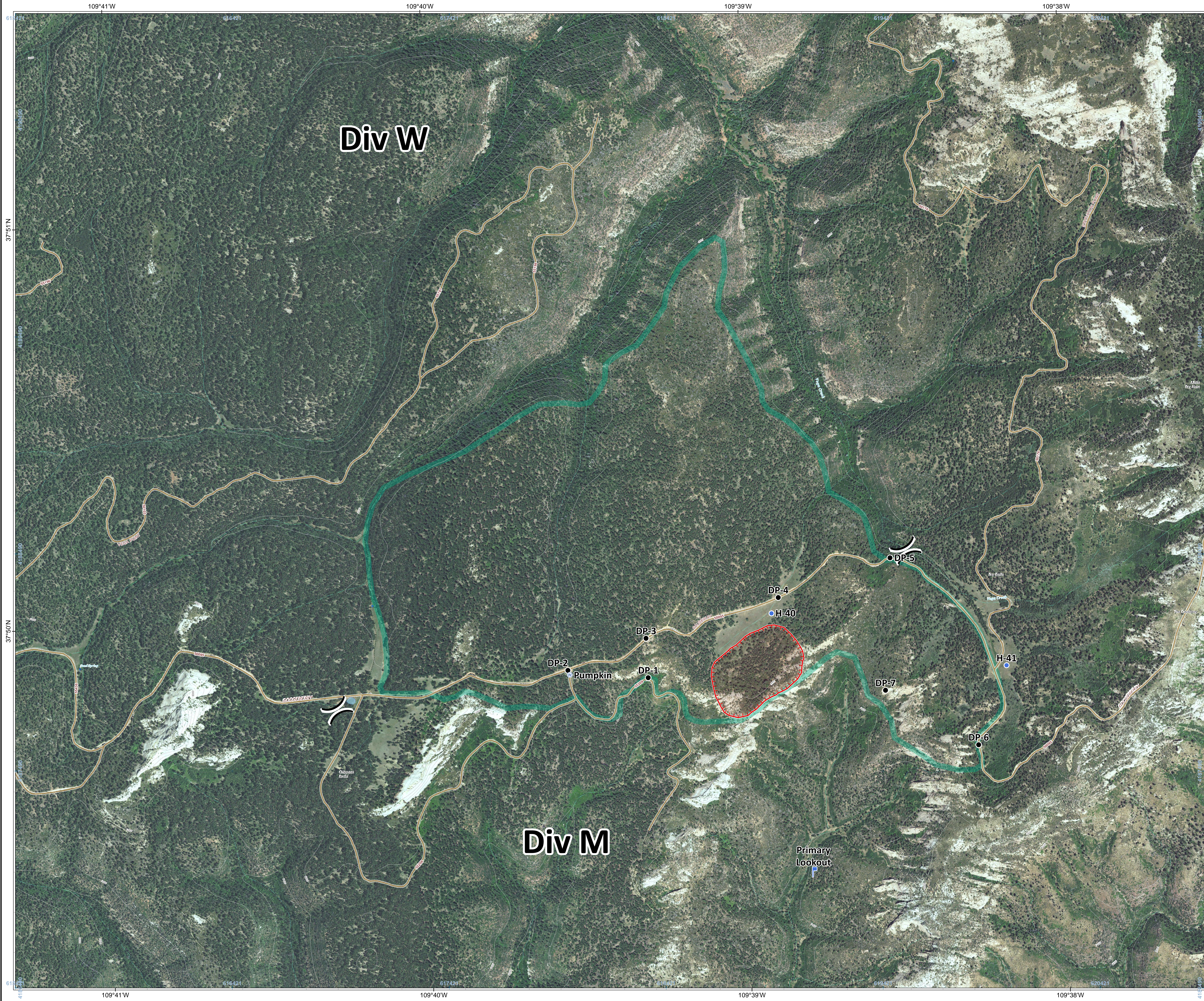


**Chippean Fire**  
 UT-MLF-009161  
**Operations Detail**  
**Aerial Imagery**  
**Div M and Div W**  
 August 9, 2019  
 appx. 29 acres on Aug. 7 1000 hr

**( (** Division Break

- Drop Point
- Helispot
- ⊕ Water Source
- ⌚ Lookout
- ▬ Uncontrolled Fire Edge
- ▭ Project Area



Drop Point		
Name	Latitude	Longitude
DP-1	37° 49.862' N	109° 39.316' W
DP-2	37° 49.883' N	109° 39.568' W
DP-3	37° 49.960' N	109° 39.321' W
DP-4	37° 50.057' N	109° 38.904' W
DP-5	37° 50.152' N	109° 38.551' W
DP-6	37° 49.683' N	109° 38.281' W
DP-7	37° 49.822' N	109° 38.571' W

Helispot		
Name	Latitude	Longitude
H-40	37° 50.018' N	109° 38.926' W
H-41	37° 49.881' N	109° 38.190' W

Incident Command Post		
Name	Latitude	Longitude
ICP	37° 46.667' N	109° 32.796' W

Lookout		
Name	Latitude	Longitude
Primary Lookout	37° 49.372' N	109° 38.806' W

Water Source		
Name	Latitude	Longitude
Pumpkin	37° 49.872' N	109° 39.562' W



**Incident Maps**

author: kshannon date: 20190809 0107 hr  
 file: ops\_planning\_aerial\_aerial\_port\_2019\_Chippean\_UTM\_F009161.mxd

Lat-Long Grid Ticks: 1' minute interval  
 UTM Grid Ticks: 1000 meter interval  
 Projection: NAD83 UTM Zone12

