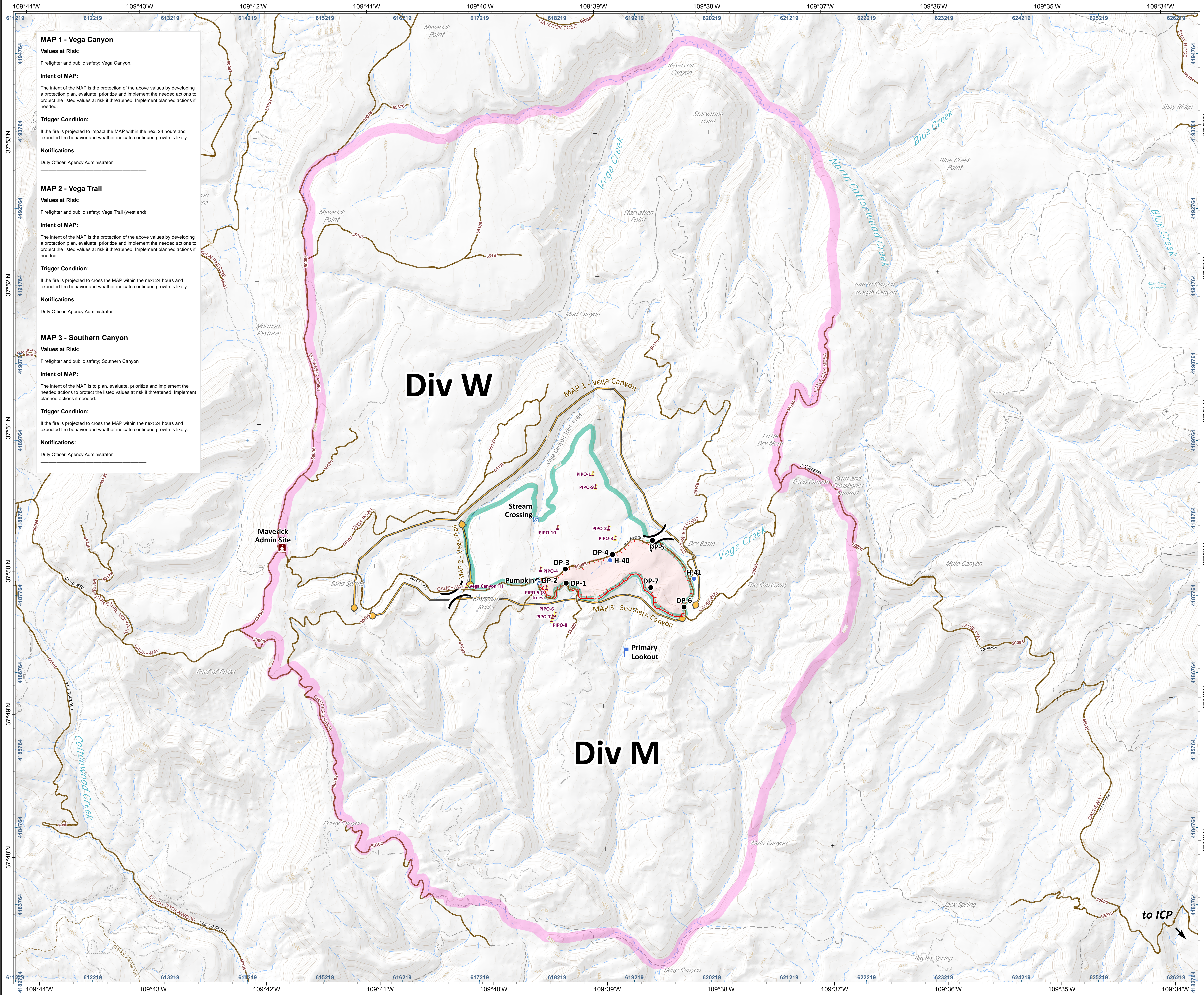


Chippean Fire
 UT-MLF-009161
Situation Map
 August 12, 2019
 appx. 227 acres on Aug. 11 1800 hr



MAP 1 - Vega Canyon
Values at Risk:
 Firefighter and public safety; Vega Canyon.
Intent of MAP:
 The intent of the MAP is the protection of the above values by developing a protection plan, evaluate, prioritize and implement the needed actions to protect the listed values at risk if threatened. Implement planned actions if needed.
Trigger Condition:
 If the fire is projected to impact the MAP within the next 24 hours and expected fire behavior and weather indicate continued growth is likely.
Notifications:
 Duty Officer, Agency Administrator

MAP 2 - Vega Trail
Values at Risk:
 Firefighter and public safety; Vega Trail (west end).
Intent of MAP:
 The intent of the MAP is the protection of the above values by developing a protection plan, evaluate, prioritize and implement the needed actions to protect the listed values at risk if threatened. Implement planned actions if needed.
Trigger Condition:
 If the fire is projected to cross the MAP within the next 24 hours and expected fire behavior and weather indicate continued growth is likely.
Notifications:
 Duty Officer, Agency Administrator

MAP 3 - Southern Canyon
Values at Risk:
 Firefighter and public safety; Southern Canyon
Intent of MAP:
 The intent of the MAP is to plan, evaluate, prioritize and implement the needed actions to protect the listed values at risk if threatened. Implement planned actions if needed.
Trigger Condition:
 If the fire is projected to cross the MAP within the next 24 hours and expected fire behavior and weather indicate continued growth is likely.
Notifications:
 Duty Officer, Agency Administrator

- Uncontrolled Fire Edge
- Division Break
- Drop Point
- Helispot
- Lookout
- Water Source
- Stream Crossing
- Value at Risk
- Maverick Admin Site
- Management Action Point
- Project Area
- Planning Area

Name	Latitude	Longitude
DP-1	37° 49.862' N	109° 39.316' W
DP-2	37° 49.883' N	109° 39.568' W
DP-3	37° 49.960' N	109° 39.321' W
DP-4	37° 50.057' N	109° 38.904' W
DP-5	37° 50.152' N	109° 38.551' W
DP-6	37° 49.683' N	109° 38.281' W
DP-7	37° 49.822' N	109° 38.571' W

Name	Latitude	Longitude
H-40	37° 50.018' N	109° 38.926' W
H-41	37° 49.881' N	109° 38.190' W

Name	Latitude	Longitude
ICP	37° 46.667' N	109° 32.796' W

Name	Latitude	Longitude
Primary Lookout	37° 49.372' N	109° 38.806' W

Name	Latitude	Longitude
Maverick Admin Site	37° 50.138' N	109° 41.815' W

Name	Latitude	Longitude
Stream Crossing	37° 50.309' N	109° 39.575' W

Name	Latitude	Longitude
PIPO-1	37° 50.625' N	109° 39.066' W
PIPO-10	37° 50.252' N	109° 39.383' W
PIPO-2	37° 50.243' N	109° 38.934' W
PIPO-3	37° 50.173' N	109° 38.879' W
PIPO-4	37° 49.962' N	109° 39.539' W
PIPO-5(3trees)	37° 49.833' N	109° 39.488' W
PIPO-6	37° 49.647' N	109° 39.418' W
PIPO-7	37° 49.627' N	109° 39.439' W
PIPO-8	37° 49.607' N	109° 39.449' W
PIPO-9	37° 50.534' N	109° 39.043' W
Vega Canyon TH	37° 49.855' N	109° 40.193' W

Name	Latitude	Longitude
Pumpkin	37° 49.872' N	109° 39.562' W



Incident Maps

author: shanson date: 20190811 2230 hr
 file: situation_map_e_post_2019_Chippean_UTMLF009161.mxd

Lat-Long Grid Ticks: 1' minute interval
 UTM Grid Ticks: 1000 meter interval
 Projection: NAD83 UTM Zone12

