

Chippean Fire
 UT-MLF-009161
IAP Map
Div M and Div W
 August 15, 2019
 appx. 227 acres on Aug. 11 1800hr

() Division Break

- Drop Point
- Helispot
- ⊕ Water Source
- ⊕ Stream Crossing
- ⊕ Lookout
- ⊕ Value at Risk
- ⊕ Maverick Admin Site
- Uncontrolled Fire Edge
- Road
- ▭ Project Area

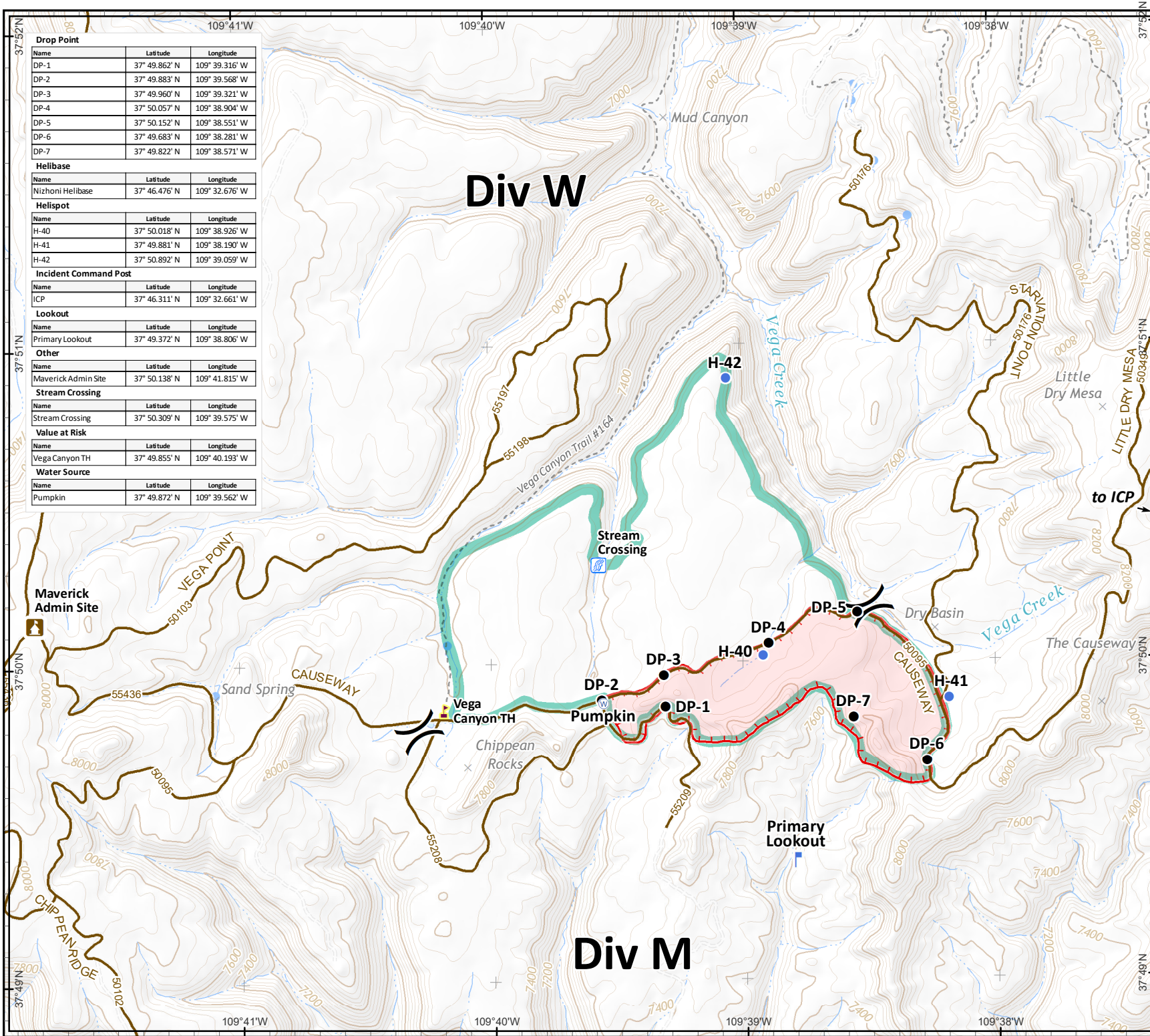


Incident Maps

0 0.25 0.5
Miles

Projection: NAD83 UTM Zone12
 Lat-Long Grid Ticks: 1' minute interval

Author: bhansen date: 20190814 2054 hr
 file: IAP_R413_p01r_2019_Chippean_UTMUTM009161_mxd



Div W

Div M

Drop Point		
Name	Latitude	Longitude
DP-1	37° 49.862' N	109° 39.316' W
DP-2	37° 49.883' N	109° 39.568' W
DP-3	37° 49.960' N	109° 39.321' W
DP-4	37° 50.057' N	109° 38.904' W
DP-5	37° 50.152' N	109° 38.551' W
DP-6	37° 49.683' N	109° 38.281' W
DP-7	37° 49.822' N	109° 38.571' W

Helibase		
Name	Latitude	Longitude
Nizhoni Helibase	37° 46.476' N	109° 32.676' W

Helispot		
Name	Latitude	Longitude
H-40	37° 50.018' N	109° 38.926' W
H-41	37° 49.881' N	109° 38.190' W
H-42	37° 50.892' N	109° 39.059' W

Incident Command Post		
Name	Latitude	Longitude
ICP	37° 46.311' N	109° 32.661' W

Lookout		
Name	Latitude	Longitude
Primary Lookout	37° 49.372' N	109° 38.806' W

Other		
Name	Latitude	Longitude
Maverick Admin Site	37° 50.138' N	109° 41.815' W

Stream Crossing		
Name	Latitude	Longitude
Stream Crossing	37° 50.309' N	109° 39.575' W

Value at Risk		
Name	Latitude	Longitude
Vega Canyon TH	37° 49.855' N	109° 40.193' W

Water Source		
Name	Latitude	Longitude
Pumpkin	37° 49.872' N	109° 39.562' W