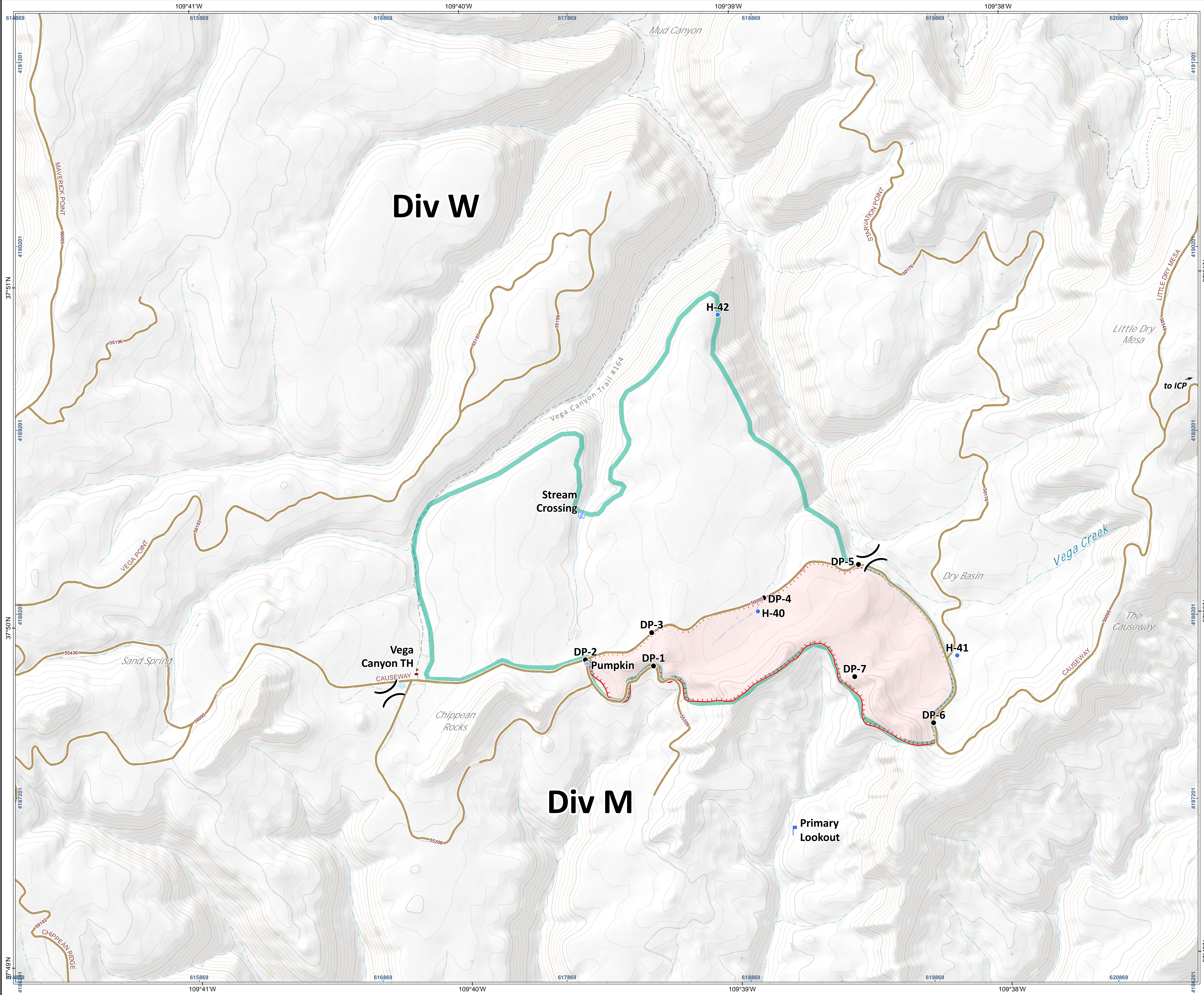


**Chippean Fire**  
 UT-MLF-009161  
**Operations Map**  
**Div M and Div W**  
 August 15, 2019  
 appx. 227 acres on Aug. 11 1800 hr

- Division Break
- Drop Point
- Helispot
- Water Source
- Stream Crossing
- Lookout
- Value at Risk
- Uncontrolled Fire Edge
- Project Area



Drop Point		
Name	Latitude	Longitude
DP-1	37° 49.862' N	109° 39.316' W
DP-2	37° 49.883' N	109° 39.568' W
DP-3	37° 49.960' N	109° 39.321' W
DP-4	37° 50.057' N	109° 38.904' W
DP-5	37° 50.152' N	109° 38.551' W
DP-6	37° 49.683' N	109° 38.281' W
DP-7	37° 49.822' N	109° 38.571' W

Helibase		
Name	Latitude	Longitude
Nizhoni Helibase	37° 46.476' N	109° 32.676' W

Helispot		
Name	Latitude	Longitude
H-40	37° 50.018' N	109° 38.926' W
H-41	37° 49.881' N	109° 38.197' W
H-42	37° 50.892' N	109° 39.059' W

Incident Command Post		
Name	Latitude	Longitude
ICP	37° 46.311' N	109° 32.661' W

Lookout		
Name	Latitude	Longitude
Primary Lookout	37° 49.372' N	109° 38.806' W

Other		
Name	Latitude	Longitude
Maverick Admin Site	37° 50.138' N	109° 41.815' W

Stream Crossing		
Name	Latitude	Longitude
Stream Crossing	37° 50.309' N	109° 39.575' W

Value at Risk		
Name	Latitude	Longitude
PIPO-01	37° 50.625' N	109° 39.066' W
PIPO-02	37° 50.243' N	109° 38.934' W
PIPO-03	37° 50.173' N	109° 38.879' W
PIPO-04	37° 49.962' N	109° 39.539' W
PIPO-05(3trees)	37° 49.833' N	109° 39.488' W
PIPO-06	37° 49.647' N	109° 39.418' W
PIPO-07	37° 49.627' N	109° 39.439' W
PIPO-08	37° 49.607' N	109° 39.449' W
PIPO-09	37° 50.534' N	109° 39.043' W
PIPO-10	37° 50.252' N	109° 39.383' W
PIPO-11	37° 49.965' N	109° 38.201' W
PIPO-12	37° 52.850' N	109° 38.442' W
PIPO-13	37° 52.950' N	109° 38.456' W
Vega Canyon TH	37° 49.855' N	109° 40.193' W

Water Source		
Name	Latitude	Longitude
Pumpkin	37° 49.872' N	109° 39.562' W



**Incident Maps**

Author: Shannon Webb, 20190814 2:12 hr  
 File: ops\_planning\_arche\_post\_2019\_Chippean\_UTMLF009161.mxd

Lat-Long Grid Ticks: 1' minute interval  
 UTM Grid Ticks: 1000 meter interval  
 Projection: NAD83 UTM Zone12

