

# Chippean Fire

UT-MLF-009161

## IAP Map

August 18, 2019

appx. 227 acres on Aug. 11 1800hr

- Drop Point
- Helispot
- W Water Source
- ▣ Stream Crossing
- └ Lookout
- ▲ Value at Risk
- ▲ Maverick Admin Site
- └ Uncontrolled Fire Edge
- Road
- ▣ Project Area

Drop Point		
Name	Latitude	Longitude
DP-1	37° 49.862' N	109° 39.316' W
DP-2	37° 49.883' N	109° 39.568' W
DP-3	37° 49.960' N	109° 39.321' W
DP-4	37° 50.057' N	109° 38.904' W
DP-5	37° 50.152' N	109° 38.551' W
DP-6	37° 49.683' N	109° 38.281' W
DP-7	37° 49.822' N	109° 38.571' W

Helibase		
Name	Latitude	Longitude
Nizhoni Helibase	37° 46.476' N	109° 32.676' W

Helispot		
Name	Latitude	Longitude
H-40	37° 50.018' N	109° 38.926' W
H-41	37° 49.881' N	109° 38.190' W
H-42	37° 50.892' N	109° 39.059' W

Incident Command Post		
Name	Latitude	Longitude
ICP	37° 46.311' N	109° 32.661' W

Lookout		
Name	Latitude	Longitude
Primary Lookout	37° 49.372' N	109° 38.806' W

Other		
Name	Latitude	Longitude
Maverick Admin Site	37° 50.138' N	109° 41.815' W

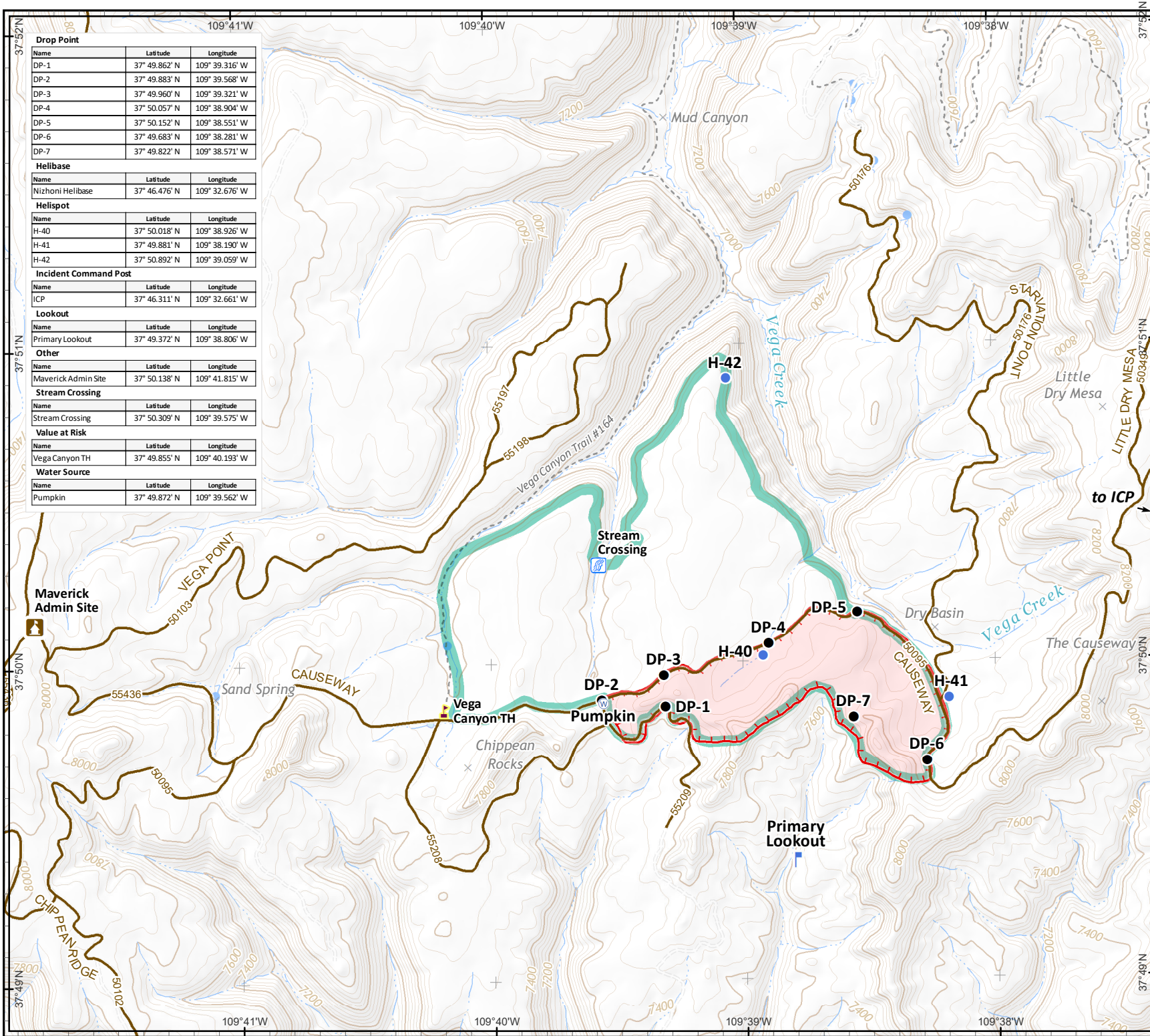
Stream Crossing		
Name	Latitude	Longitude
Stream Crossing	37° 50.309' N	109° 39.575' W

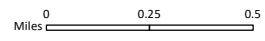
Value at Risk		
Name	Latitude	Longitude
Vega Canyon TH	37° 49.855' N	109° 40.193' W

Water Source		
Name	Latitude	Longitude
Pumpkin	37° 49.872' N	109° 39.562' W



Incident Maps



Projection: NAD83 UTM Zone12  
 Lat-Long Grid Ticks: 1' minute interval

Author: bhansen date: 20190817 17:13 hr  
 file: IAP\_R413\_poit\_2019\_Chippean\_UTMMLF009161\_mxd