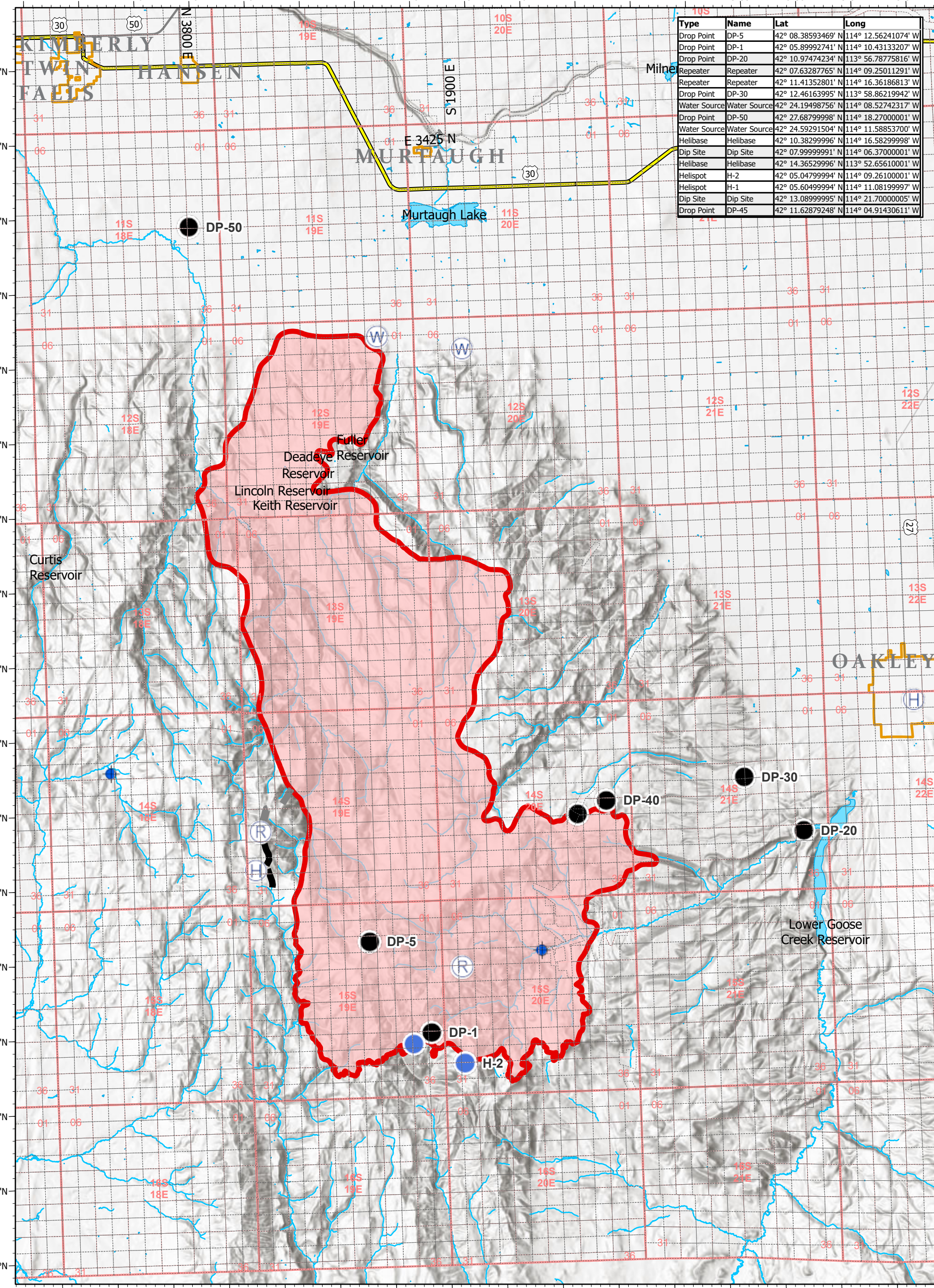


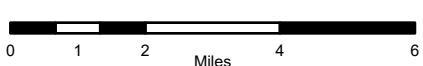
114°24'W 114°22'W 114°20'W 114°18'W 114°16'W 114°14'W 114°12'W 114°10'W 114°8'W 114°6'W 114°4'W 114°2'W 114°W 113°58'W 113°56'W 113°54'W 113°52'W



Type	Name	Lat	Long
Drop Point	DP-5	42° 08.38593469' N	114° 12.56241074' W
Drop Point	DP-1	42° 05.89992741' N	114° 10.43133207' W
Drop Point	DP-20	42° 10.97474234' N	113° 56.78775816' W
Repeater	Repeater	42° 07.63287765' N	114° 09.25011291' W
Repeater	Repeater	42° 11.41352801' N	114° 16.36186813' W
Drop Point	DP-30	42° 12.46163995' N	113° 58.86219942' W
Water Source	Water Source	42° 24.19498756' N	114° 08.52742317' W
Drop Point	DP-50	42° 27.68799998' N	114° 18.27000001' W
Water Source	Water Source	42° 24.59291504' N	114° 11.58853700' W
Helibase	Helibase	42° 10.38299996' N	114° 16.58299998' W
Dip Site	Dip Site	42° 07.99999991' N	114° 06.37000001' W
Helibase	Helibase	42° 14.36529996' N	113° 52.65610001' W
Helispot	H-2	42° 05.04799994' N	114° 09.26100001' W
Helispot	H-1	42° 05.60499994' N	114° 11.08199997' W
Dip Site	Dip Site	42° 13.08999995' N	114° 21.70000005' W
Drop Point	DP-45	42° 11.62879248' N	114° 04.91430611' W

- | | | |
|---|--|--|
| Event Point
<ul style="list-style-type: none"> Aerial Hazard Aerial Ignition Airstrip or Airport Bridge Camp Closure Dip Site Drop Point Fire Station First Aid Station Gate Hazard Helibase Unimproved Landing Area Helispot Hot Spot Internet Access Landmark Lookout Mobile Weather Unit Repeater Retardant/Mud Pit Safety Zone Sling Site Spot Fire Staging Area Water Source Restricted Water Source Value at Risk Other | Event Polygon
<ul style="list-style-type: none"> Wildfire Daily Fire Perimeter Prescribed Fire | Event Line
<ul style="list-style-type: none"> Uncontrolled Fire Edge Completed Plow Line Completed Hand Line Completed Burnout Proposed Burnout Active Burnout |
|---|--|--|

Pilot
 Badger Fire
 ID-STF-000351
 9/19/2020



97,210 Est. Acres
 Acres from 9/18 1900hrs
 NAD 1983 UTM Zone 11N

