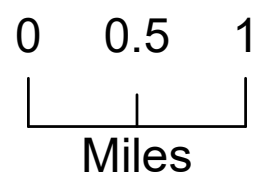
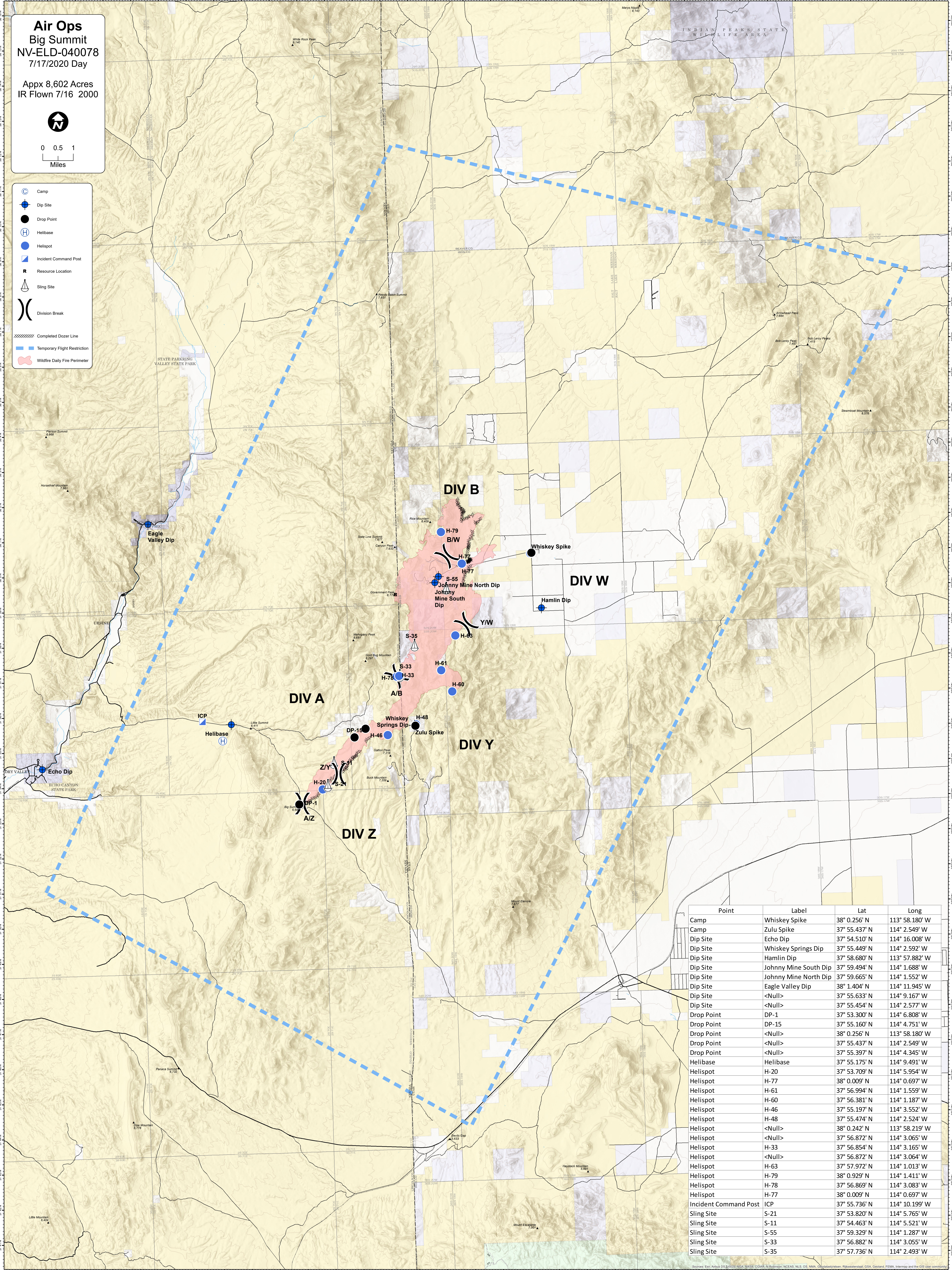


Air Ops
Big Summit
NV-ELD-040078
7/17/2020 Day

Appx 8,602 Acres
 IR Flown 7/16 2000



- ⓐ Camp
- Ⓛ Dip Site
- Drop Point
- Ⓜ Helibase
- Helispot
- Ⓠ Incident Command Post
- Ⓡ Resource Location
- ⚓ Sling Site
- ⎓ Division Break
- ⓧ Completed Dozer Line
- Ⓞ Temporary Flight Restriction
- Ⓜ Wildlife Daily Fire Perimeter



| Point | Label | Lat | Long |
|-----------------------|-----------------------|---------------|----------------|
| Camp | Whiskey Spike | 38° 0.256' N | 113° 58.180' W |
| Camp | Zulu Spike | 37° 55.437' N | 114° 2.549' W |
| Dip Site | Echo Dip | 37° 54.510' N | 114° 16.008' W |
| Dip Site | Whiskey Springs Dip | 37° 55.449' N | 114° 2.592' W |
| Dip Site | Hamlin Dip | 37° 58.680' N | 113° 57.882' W |
| Dip Site | Johnny Mine South Dip | 37° 59.494' N | 114° 1.688' W |
| Dip Site | Johnny Mine North Dip | 37° 59.665' N | 114° 1.552' W |
| Dip Site | Eagle Valley Dip | 38° 1.404' N | 114° 11.945' W |
| Dip Site | <Null> | 37° 55.633' N | 114° 9.167' W |
| Dip Site | <Null> | 37° 55.454' N | 114° 2.577' W |
| Drop Point | DP-1 | 37° 53.300' N | 114° 6.808' W |
| Drop Point | DP-15 | 37° 55.160' N | 114° 4.751' W |
| Drop Point | <Null> | 38° 0.256' N | 113° 58.180' W |
| Drop Point | <Null> | 37° 55.437' N | 114° 2.549' W |
| Drop Point | <Null> | 37° 55.397' N | 114° 4.345' W |
| Helibase | Helibase | 37° 55.175' N | 114° 9.491' W |
| Helispot | H-20 | 37° 53.709' N | 114° 5.954' W |
| Helispot | H-77 | 38° 0.009' N | 114° 0.697' W |
| Helispot | H-61 | 37° 56.994' N | 114° 1.559' W |
| Helispot | H-60 | 37° 56.381' N | 114° 1.187' W |
| Helispot | H-46 | 37° 55.197' N | 114° 3.552' W |
| Helispot | H-48 | 37° 55.474' N | 114° 2.524' W |
| Helispot | <Null> | 38° 0.242' N | 113° 58.219' W |
| Helispot | <Null> | 37° 56.872' N | 114° 3.065' W |
| Helispot | H-33 | 37° 56.854' N | 114° 3.165' W |
| Helispot | <Null> | 37° 56.872' N | 114° 3.064' W |
| Helispot | H-63 | 37° 57.972' N | 114° 1.013' W |
| Helispot | H-79 | 38° 0.929' N | 114° 1.411' W |
| Helispot | H-78 | 37° 56.869' N | 114° 3.083' W |
| Helispot | H-77 | 38° 0.009' N | 114° 0.697' W |
| Incident Command Post | ICP | 37° 55.736' N | 114° 10.199' W |
| Sling Site | S-21 | 37° 53.820' N | 114° 5.765' W |
| Sling Site | S-11 | 37° 54.463' N | 114° 5.521' W |
| Sling Site | S-55 | 37° 59.329' N | 114° 1.287' W |
| Sling Site | S-33 | 37° 56.882' N | 114° 3.055' W |
| Sling Site | S-35 | 37° 57.736' N | 114° 2.493' W |

Source: Esri; Airbus DS; USGS; NASA; NOAA; CGAR; N/Robinson; NCEAS; NLS; US; NMA; DigitalGlobe; GeoEye; GeoEye; FEMA; Intermap and the GIS user community