

IAP

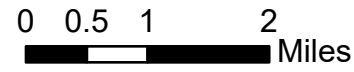
Big Summit

NV-ELD-040078

7/23/2020

Tile Index

8,461 acres at 7/19/20 0136



- Camp
- Dip Site
- Drop Point
- Gate
- Helibase
- Helispot
- Internet Access
- Repair Point
- Sling Site
- Stream Crossing
- Water Development or Draft Site
- Value at Risk
- Contained Line
- Completed Dozer Line
- Completed Hand Line
- Access or Improved Road
- Temporary Flight Restriction
- Wildfire Daily Fire Perimeter

Land Designations\Ownership

- Bureau of Land Management
- State
- State Park

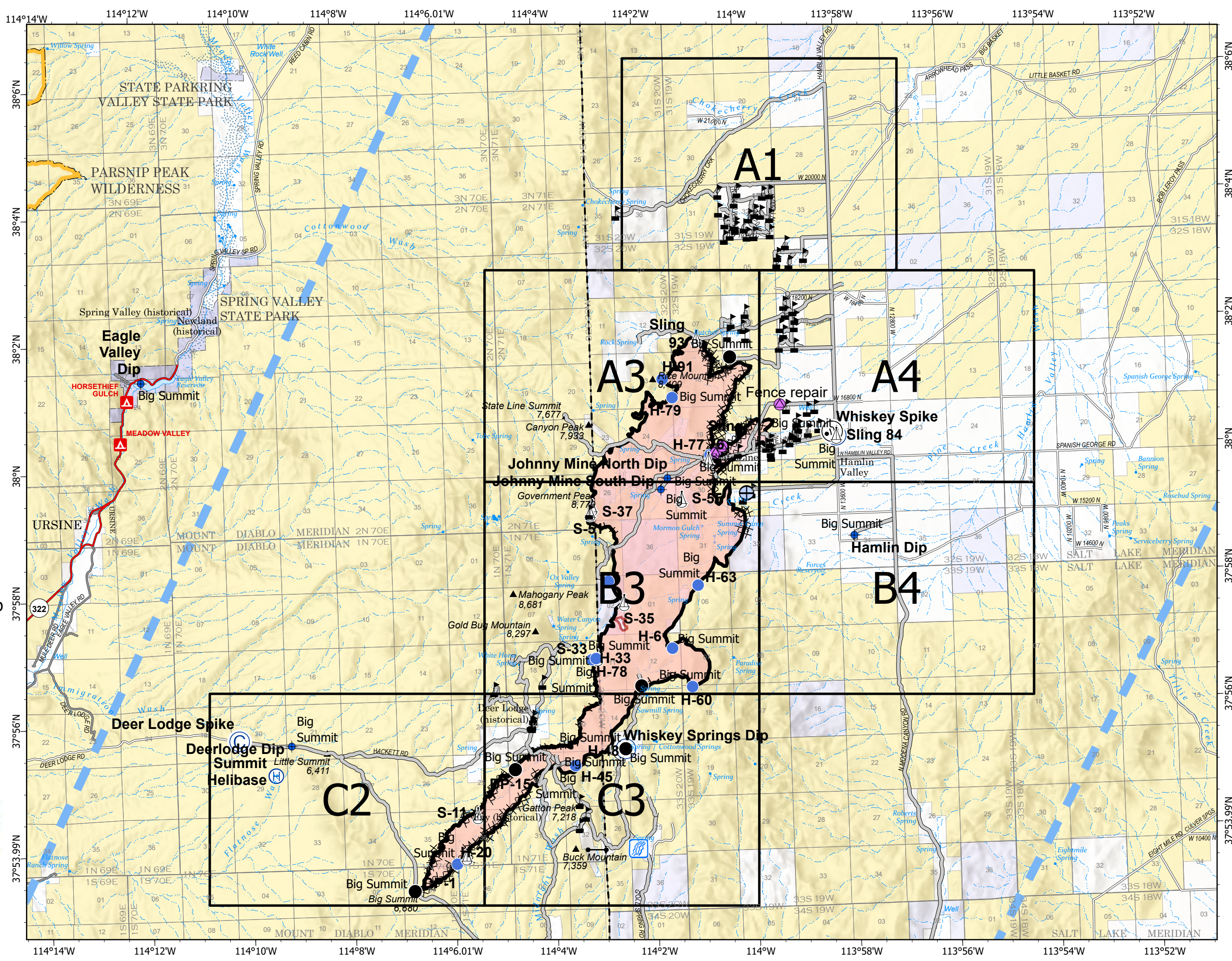


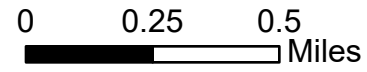
Mobile Maps



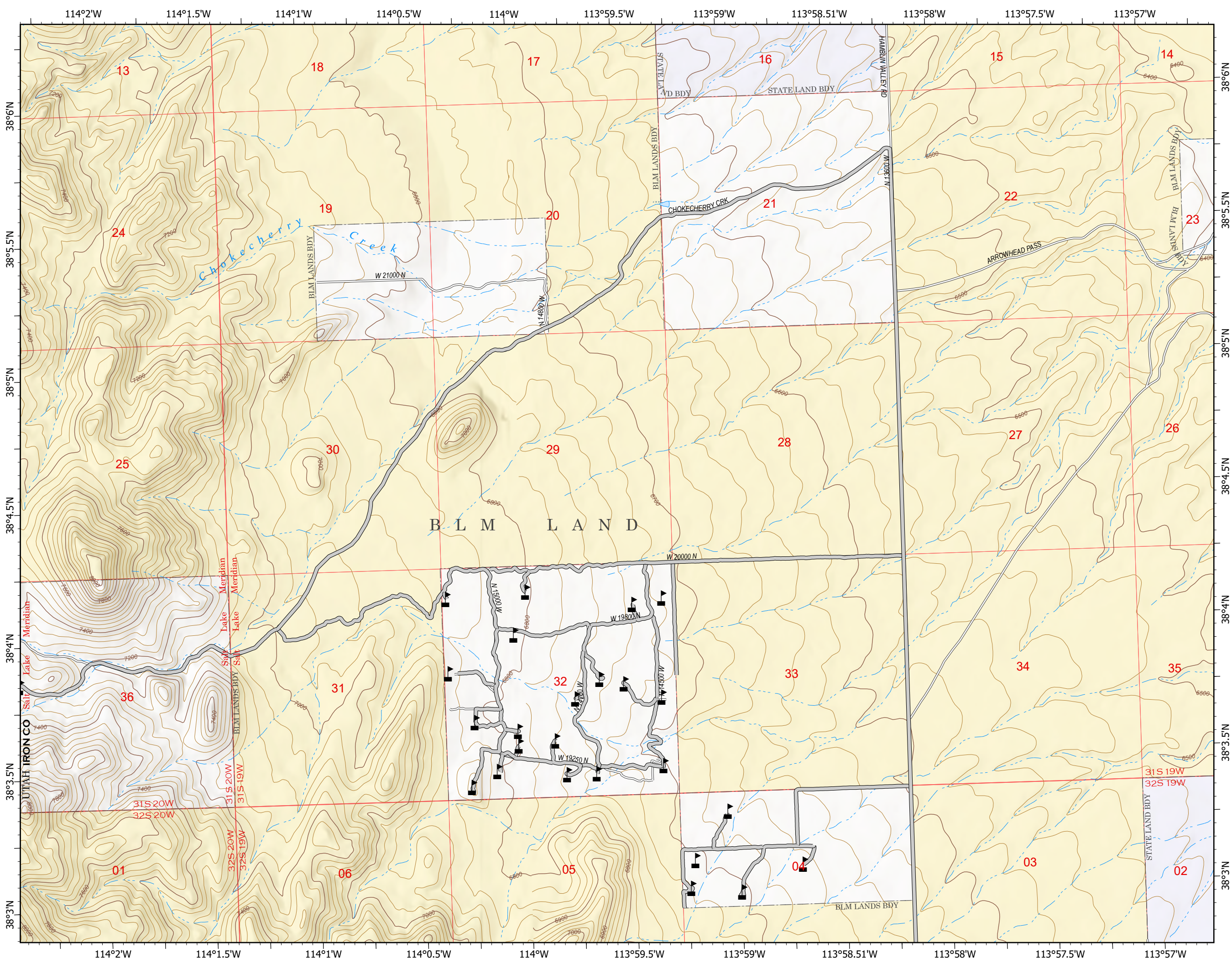
Team 5

7/22/2020 1737
Acres from Mixed Methods
North American 1983 Datum, LatLong
Grid



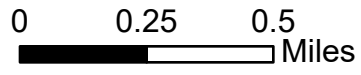


- Value at Risk
- Access or Improved Road
- Land Designations\Ownership**
- Bureau of Land Management
- State



Mobile Maps

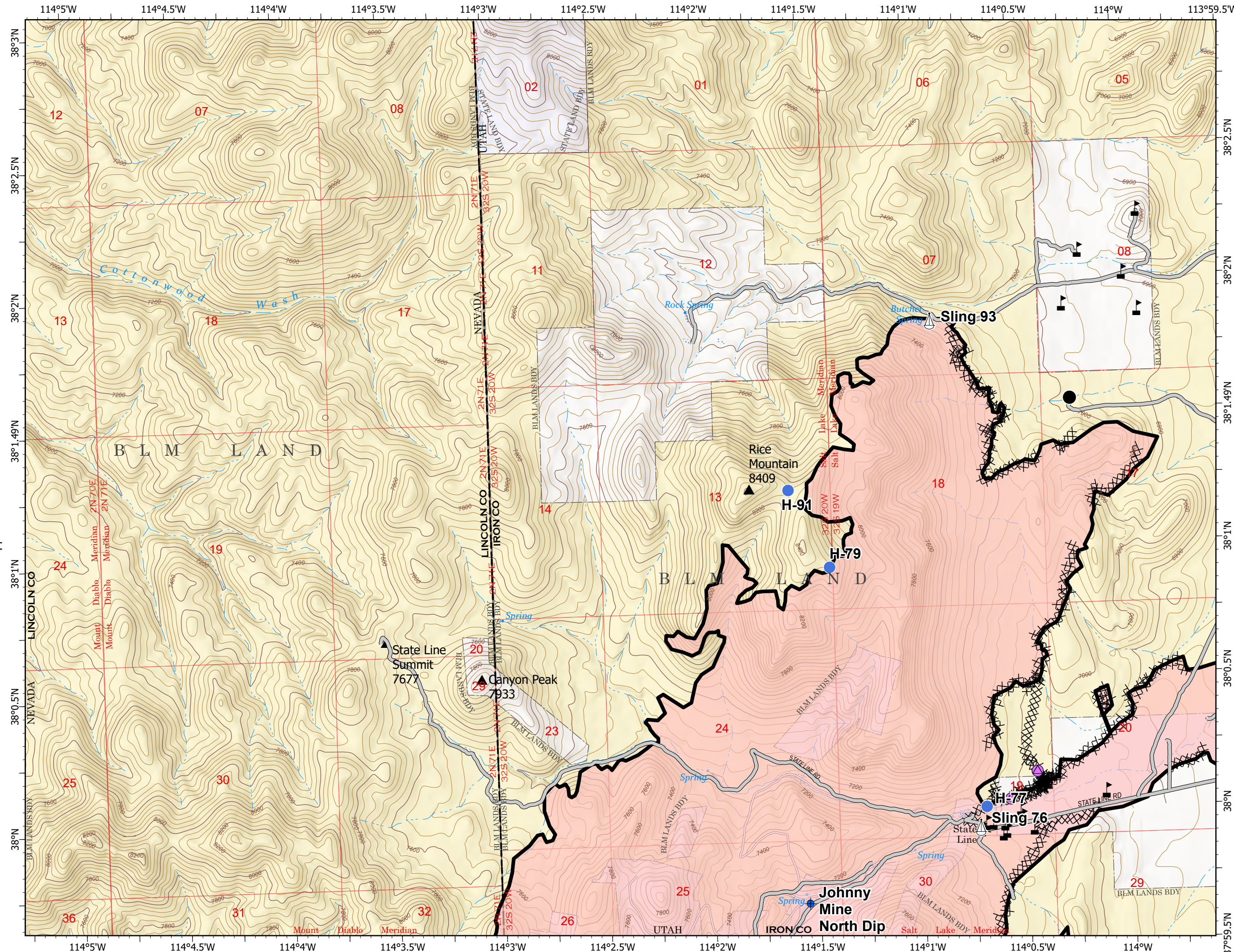
Team 5

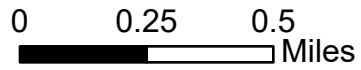


- Dip Site
- Drop Point
- Helispot
- Repair Point
- Sling Site
- Value at Risk
- Contained Line
- Completed Dozer Line
- Completed Hand Line
- Access or Improved Road
- Wildfire Daily Fire Perimeter
- Land Designations\Ownership**
- Bureau of Land Management
- State

Mobile Maps

Team 5



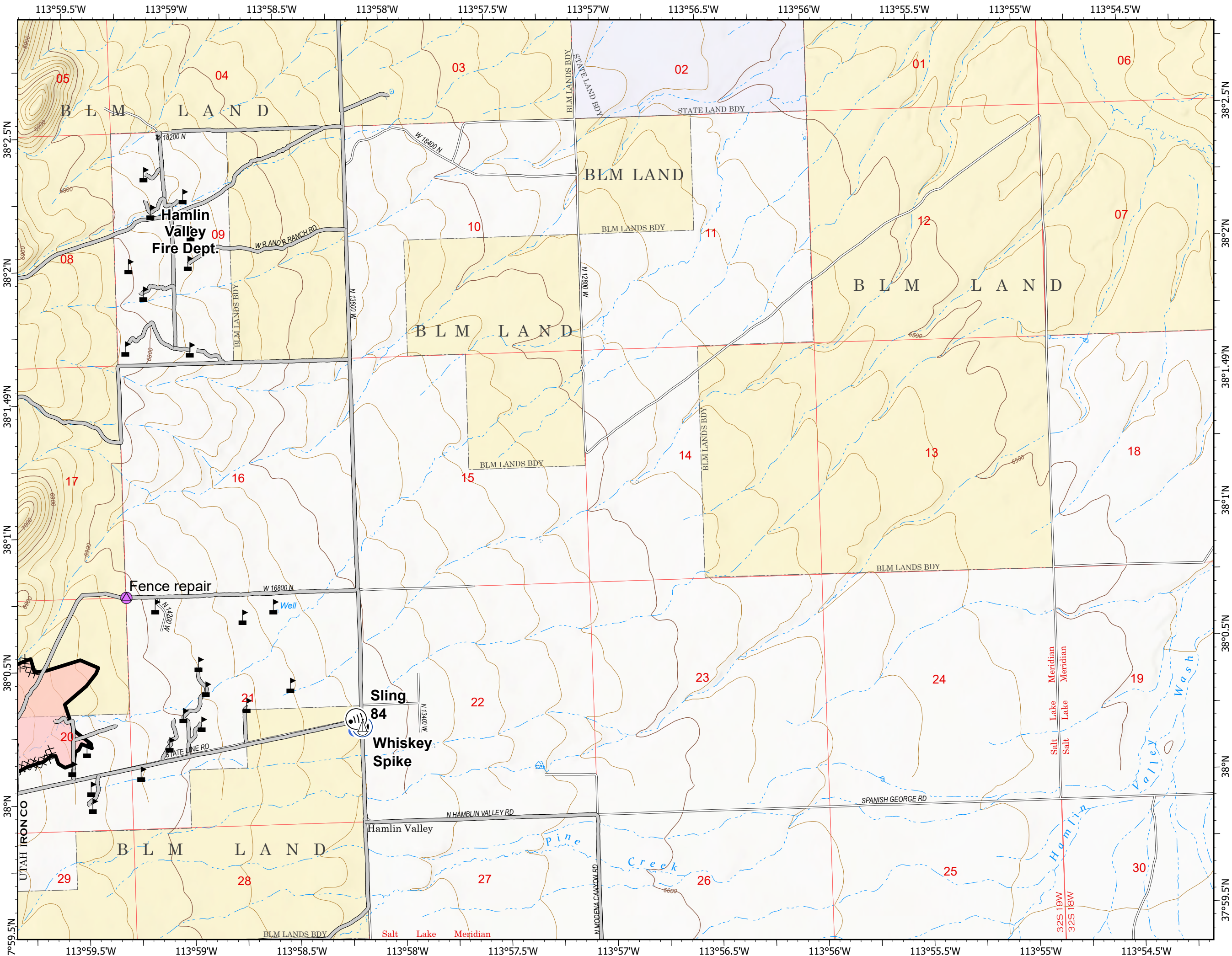


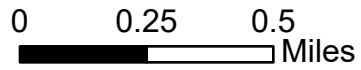
- Camp
- Drop Point
- Helispot
- Internet Access
- Repair Point
- Sling Site
- Value at Risk
- Contained Line
- Completed Dozer Line
- Access or Improved Road
- Wildfire Daily Fire Perimeter
- Land Designations\Ownership**
- Bureau of Land Management
- State

Mobile Maps

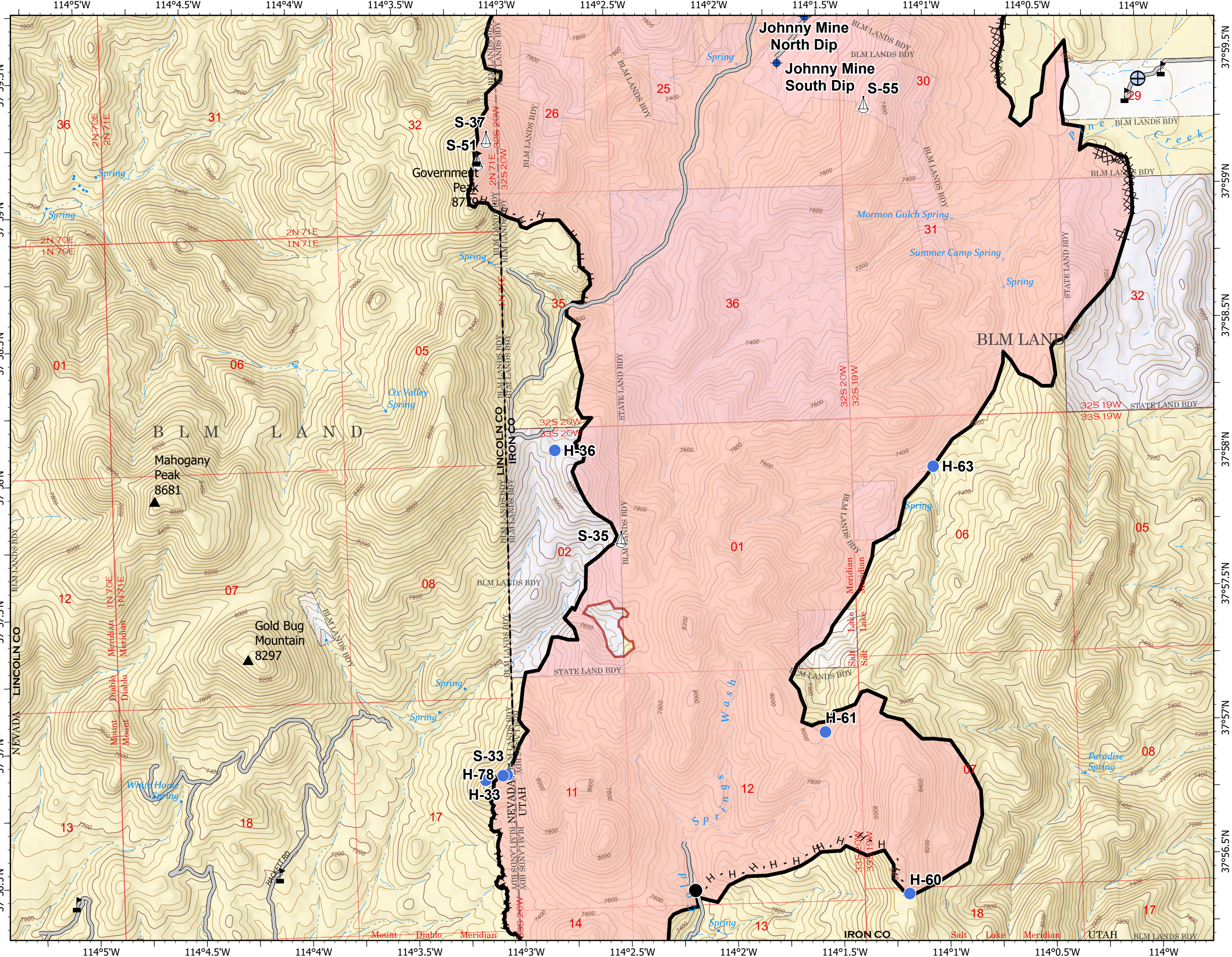
Team 5

7/22/2020 1732
 Acres from Mixed Methods
 North American 1983 Datum. LatLong
 Grid



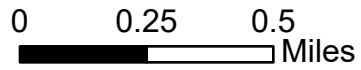


- Dip Site
- Drop Point
- Helispot
- Sling Site
- Water Development or Draft Site
- Value at Risk
- Contained Line
- Completed Dozer Line
- Completed Hand Line
- Access or Improved Road
- Wildfire Daily Fire Perimeter
- Land Designations\Ownership**
- Bureau of Land Management
- State

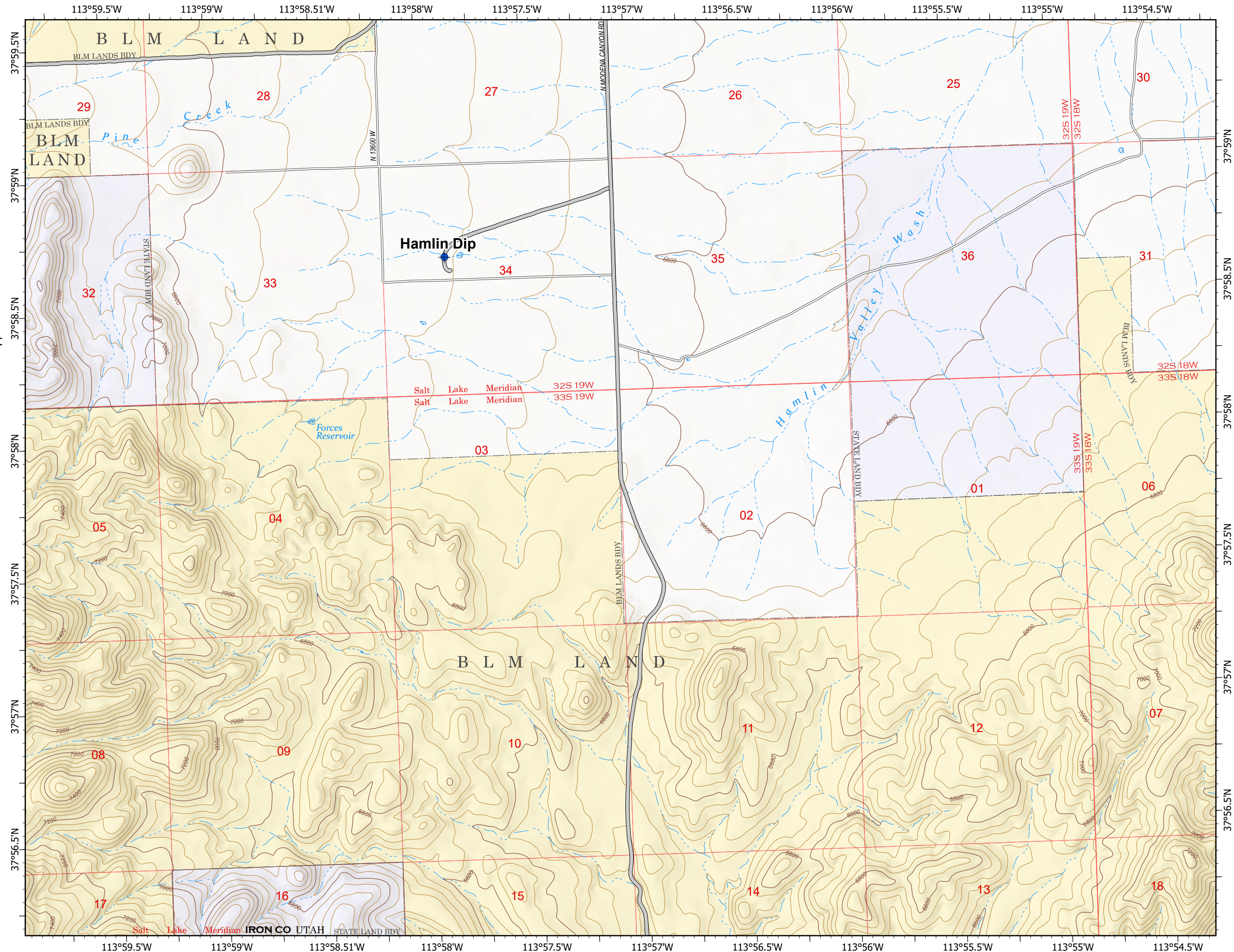


Mobile Maps

Team 5



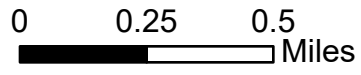
- Dip Site
- Value at Risk
- Access or Improved Road
- Land Designations\Ownership**
 - Bureau of Land Management
 - State



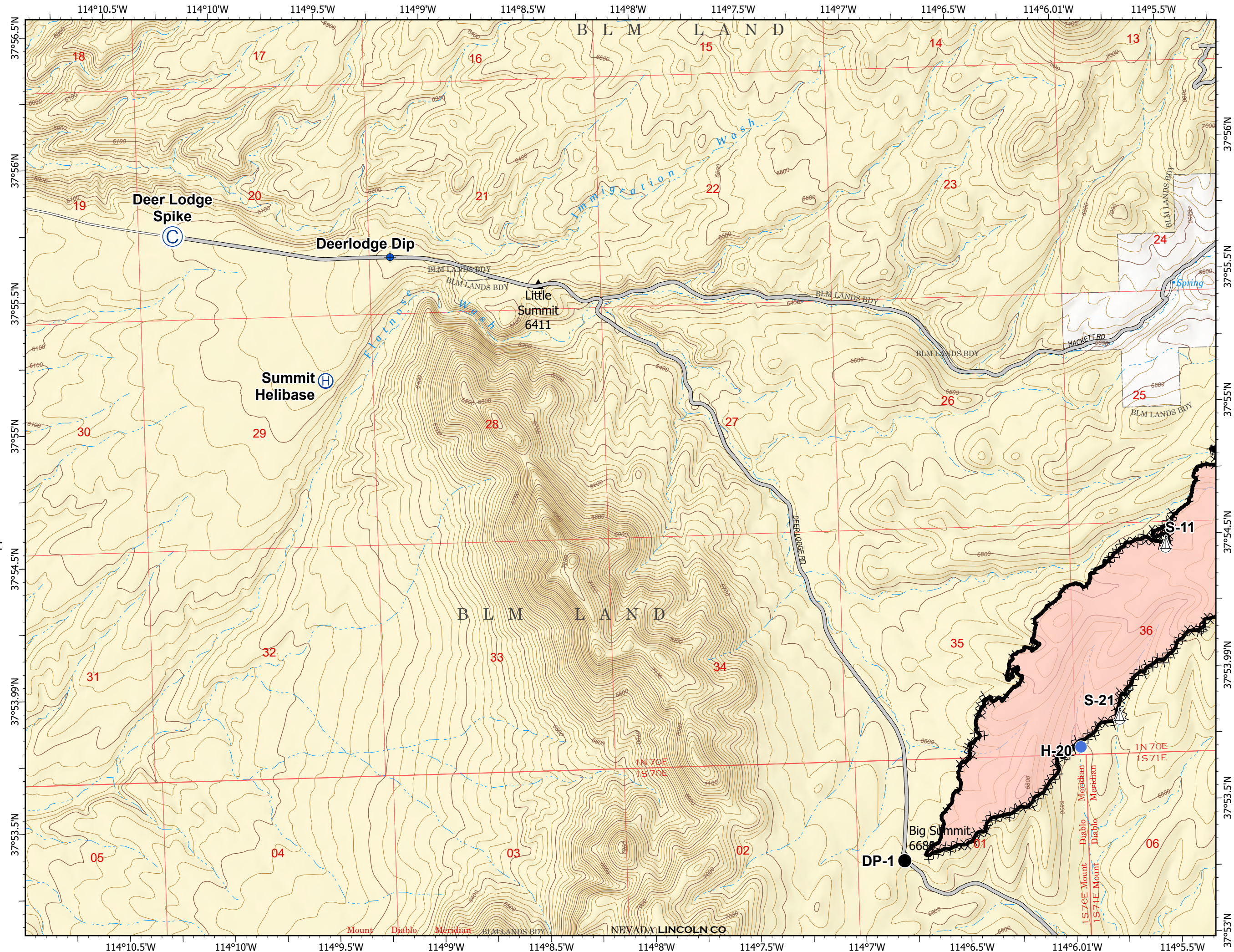
W N E S

Mobile Maps

Team 5

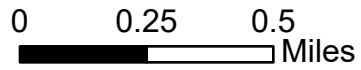


- Camp
- Dip Site
- Drop Point
- Helibase
- Helispot
- Sling Site
- Contained Line
- Completed Dozer Line
- Completed Hand Line
- Access or Improved Road
- Wildfire Daily Fire Perimeter
- Land Designations\Ownership
- Bureau of Land Management

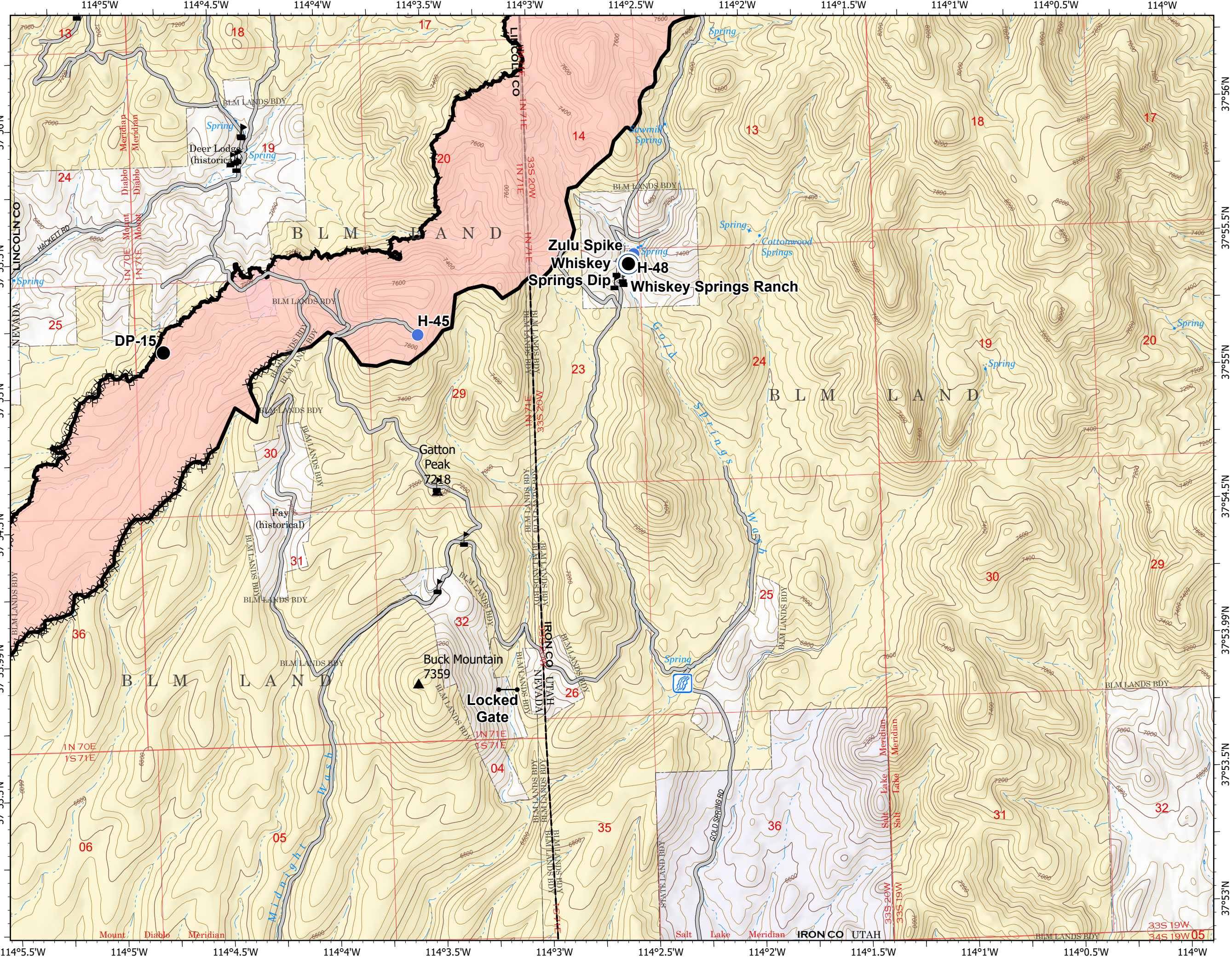


Mobile Maps

Team 5



- Camp
 - Dip Site
 - Drop Point
 - Gate
 - Helispot
 - Sling Site
 - Stream Crossing
 - Value at Risk
 - Contained Line
 - Completed Dozer Line
 - Completed Hand Line
 - Access or Improved Road
 - Wildfire Daily Fire Perimeter
- Land Designations/Ownership
- Bureau of Land Management
 - State



Mobile Maps

Team 5