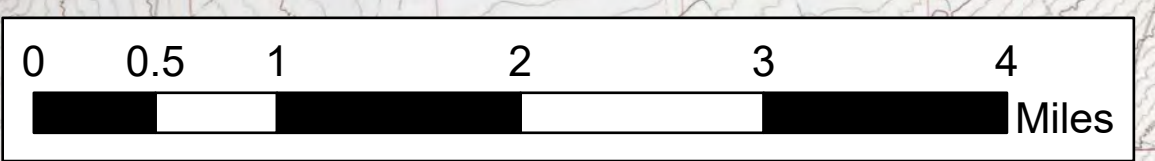


AIR OPS

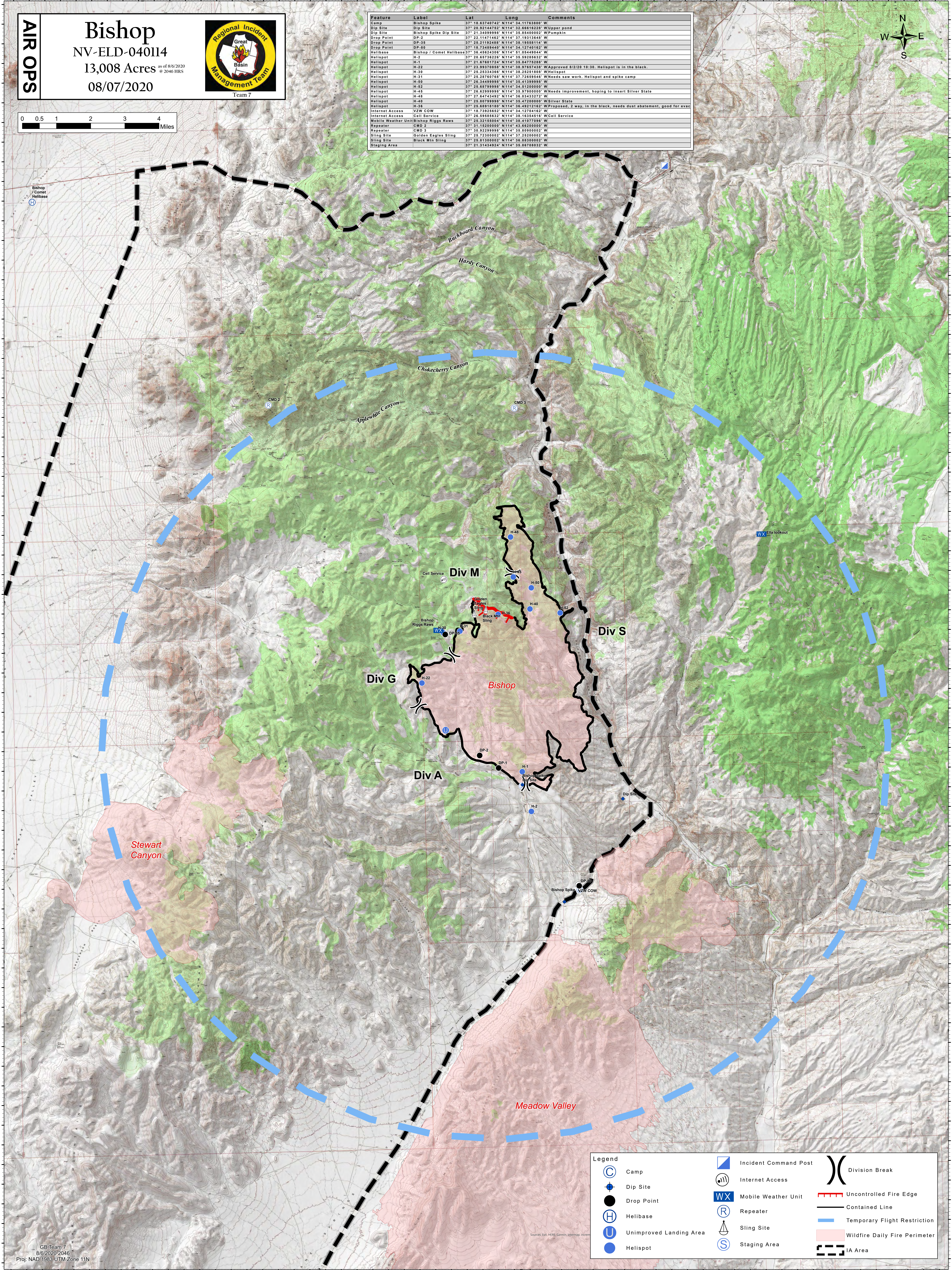
Bishop
NV-ELD-040114
13,008 Acres as of 8/6/2020
@ 2046 HRS
08/07/2020



Team 7



Feature	Label	Lat	Long	Comments
Camp	Bishop Spike	37° 18.63740742' N	114° 34.11763800' W	
Dip Site	Dip Site	37° 20.92144752' N	114° 32.66616228' W	Upper pond
Dip Site	Bishop Spike Dip Site	37° 21.34099898' N	114° 35.85400002' W	Pumpkin
Drop Point	DP-2	37° 22.14714622' N	114° 37.19313448' W	
Drop Point	DP-35	37° 25.21192468' N	114° 38.19358114' W	
Drop Point	DP-80	37° 18.73489440' N	114° 34.12749162' W	
Helibase	Bishop / Comet Helibase	37° 36.48623200' N	114° 51.06448044' W	
Helispot	H-2	37° 20.65736226' N	114° 35.59286332' W	
Helispot	H-1	37° 21.67801724' N	114° 35.84775288' W	
Helispot	H-22	37° 20.93781850' N	114° 38.97657438' W	Approved 8/2/20 10:30. Helispot is in the black.
Helispot	H-30	37° 25.25334366' N	114° 38.25251808' W	
Helispot	H-31	37° 26.28760768' N	114° 37.72699648' W	Needs saw work. Helispot and spike camp
Helispot	H-50	37° 26.34499898' N	114° 35.41599898' W	
Helispot	H-52	37° 26.68789898' N	114° 34.51200000' W	
Helispot	H-45	37° 26.62899898' N	114° 35.97800000' W	Needs improvement, hoping to insert Silver State
Helispot	H-48	37° 27.64734492' N	114° 36.03433272' W	
Helispot	H-40	37° 26.80789898' N	114° 36.47200000' W	Silver State
Helispot	H-36	37° 26.68818180' N	114° 36.49212162' W	Proposed, 2 way, in the black, needs dust abatement, good for evac
Internet Access	VZW COW	37° 18.73928652' N	114° 34.12704162' W	
Internet Access	Cell Service	37° 25.69181632' N	114° 38.16334518' W	Cell Service
Mobile Weather Unit	Bishop Riggs Raws	37° 26.32155004' N	114° 38.41077096' W	
Repeater	CMD 2	37° 31.19200000' N	114° 43.86200000' W	
Repeater	CMD 3	37° 20.92291918' N	114° 35.89900000' W	
Sling Site	Golden Eagles Sling	37° 26.72300002' N	114° 37.25200002' W	
Sling Site	Black Mtn Sling	37° 26.81300002' N	114° 36.88300002' W	
Staging Area		37° 21.37438324' N	114° 36.86788932' W	



Legend

- Camp (C)
- Dip Site (D)
- Drop Point (●)
- Helibase (H)
- Unimproved Landing Area (U)
- Helispot (●)
- Incident Command Post (IP)
- Internet Access (I)
- Mobile Weather Unit (WX)
- Repeater (R)
- Sling Site (S)
- Staging Area (S)
- Division Break (X)
- Uncontrolled Fire Edge (red line)
- Contained Line (black line)
- Temporary Flight Restriction (blue dashed line)
- Wildfire Daily Fire Perimeter (pink shaded area)
- IA Area (black dashed line)