

Bishop
 NV-ELD-040114
 13,008 Acres
 as of 8/6/2020@ 2053 HRS
 08/07/2020

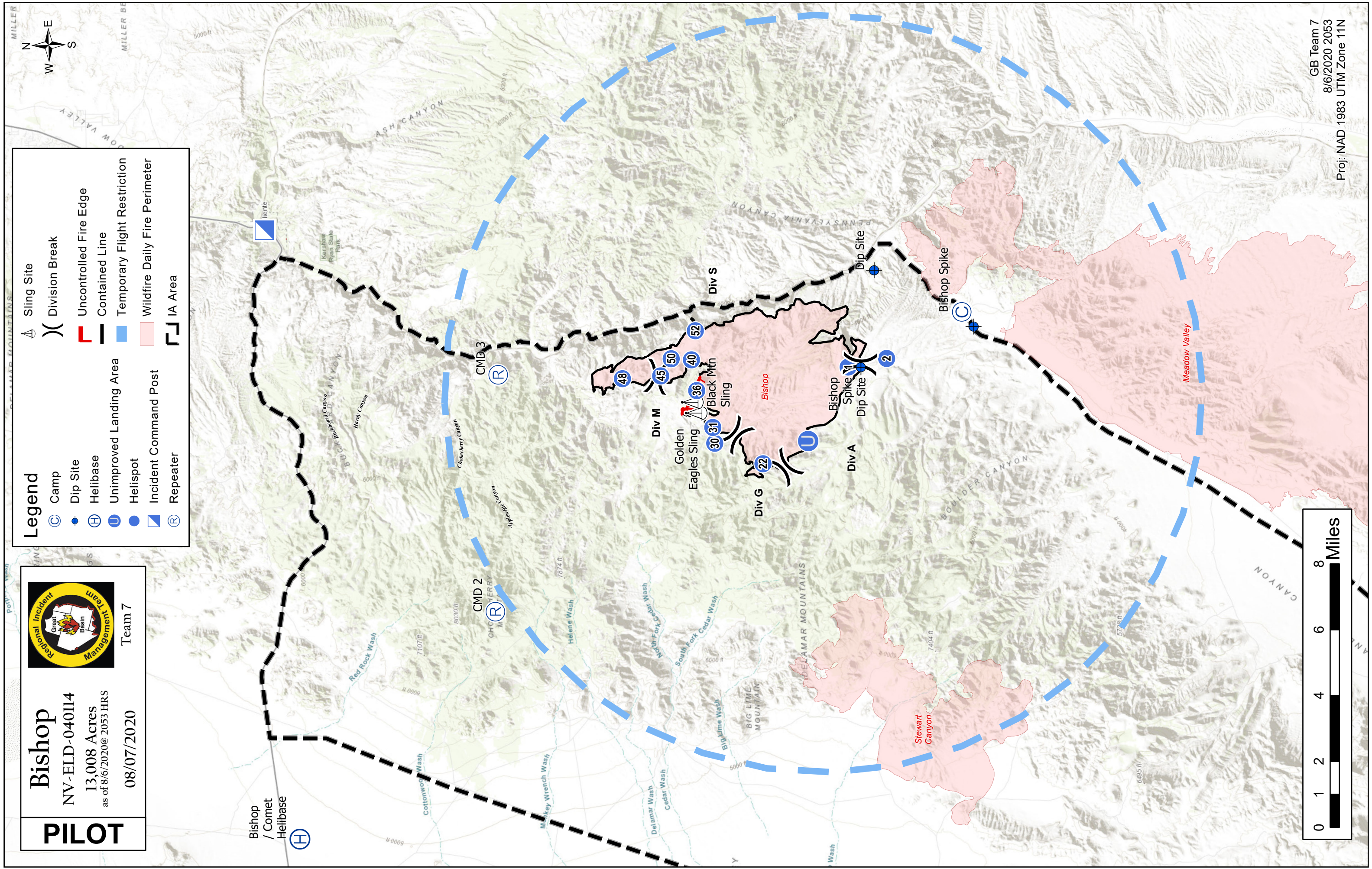
PILOT



Team 7

Legend

Camp	Sling Site
Dip Site	Division Break
Helibase	Uncontrolled Fire Edge
Unimproved Landing Area	Contained Line
Helispot	Temporary Flight Restriction
Incident Command Post	Wildfire Daily Fire Perimeter
Repeater	IA Area



GB Team 7
 8/6/2020 2053
 Proj: NAD 1983 UTM Zone 11N

Feature	Label	Lat	Long	Comments
Camp	Bishop Spike	37° 18.63740742' N	114° 34.11763800' W	
Dip Site	Dip Site	37° 20.92144752' N	114° 32.66616228' W	Upper pond
Dip Site	Bishop Spike Dip Site	37° 21.34099998' N	114° 35.85400002' W	Pumpkin
Drop Point	DP-2	37° 22.11471462' N	114° 37.19313648' W	
Drop Point	DP-35	37° 25.21192488' N	114° 38.19558114' W	
Drop Point	DP-80	37° 18.73489440' N	114° 34.12740162' W	
Helibase	Bishop / Comet Helibase	37° 36.45624306' N	114° 51.05449044' W	
Helispot	H-2	37° 20.65736226' N	114° 35.59285632' W	
Helispot	H-1	37° 21.67601724' N	114° 35.84775288' W	
Helispot	H-22	37° 23.99370858' N	114° 38.97657438' W	Approved 8/2/20 10:30. Helispot is in the black.
Helispot	H-30	37° 25.25334366' N	114° 38.25251808' W	Helispot
Helispot	H-31	37° 25.28760768' N	114° 37.72659546' W	Needs saw work. Helispot and spike camp
Helispot	H-50	37° 26.34499998' N	114° 35.41399998' W	
Helispot	H-52	37° 25.68799998' N	114° 34.51200000' W	
Helispot	H-45	37° 26.62999998' N	114° 35.97900000' W	Needs improvement, hoping to insert Silver State
Helispot	H-48	37° 27.64743492' N	114° 36.03433272' W	
Helispot	H-40	37° 25.80799998' N	114° 35.47200000' W	Silver State
Helispot	H-36	37° 25.68918180' N	114° 36.49212162' W	Proposed, 2 way, in the black, needs dust abatement, good for evac
Internet Access	VZW COW	37° 18.73925652' N	114° 34.12704162' W	
Internet Access	Cell Service	37° 26.59585632' N	114° 38.16354516' W	Cell Service
Mobile Weather Unit	Bishop Riggs Raws	37° 25.32155004' N	114° 38.41077096' W	
Repeater	CMD 2	37° 31.15200000' N	114° 43.66200000' W	
Repeater	CMD 3	37° 30.92299998' N	114° 35.80900002' W	
Sling Site	Golden Eagles Sling	37° 25.72300002' N	114° 37.25200002' W	
Sling Site	Black Mtn Sling	37° 25.81300002' N	114° 36.88300002' W	
Staging Area		37° 21.31434924' N	114° 35.86708032' W	