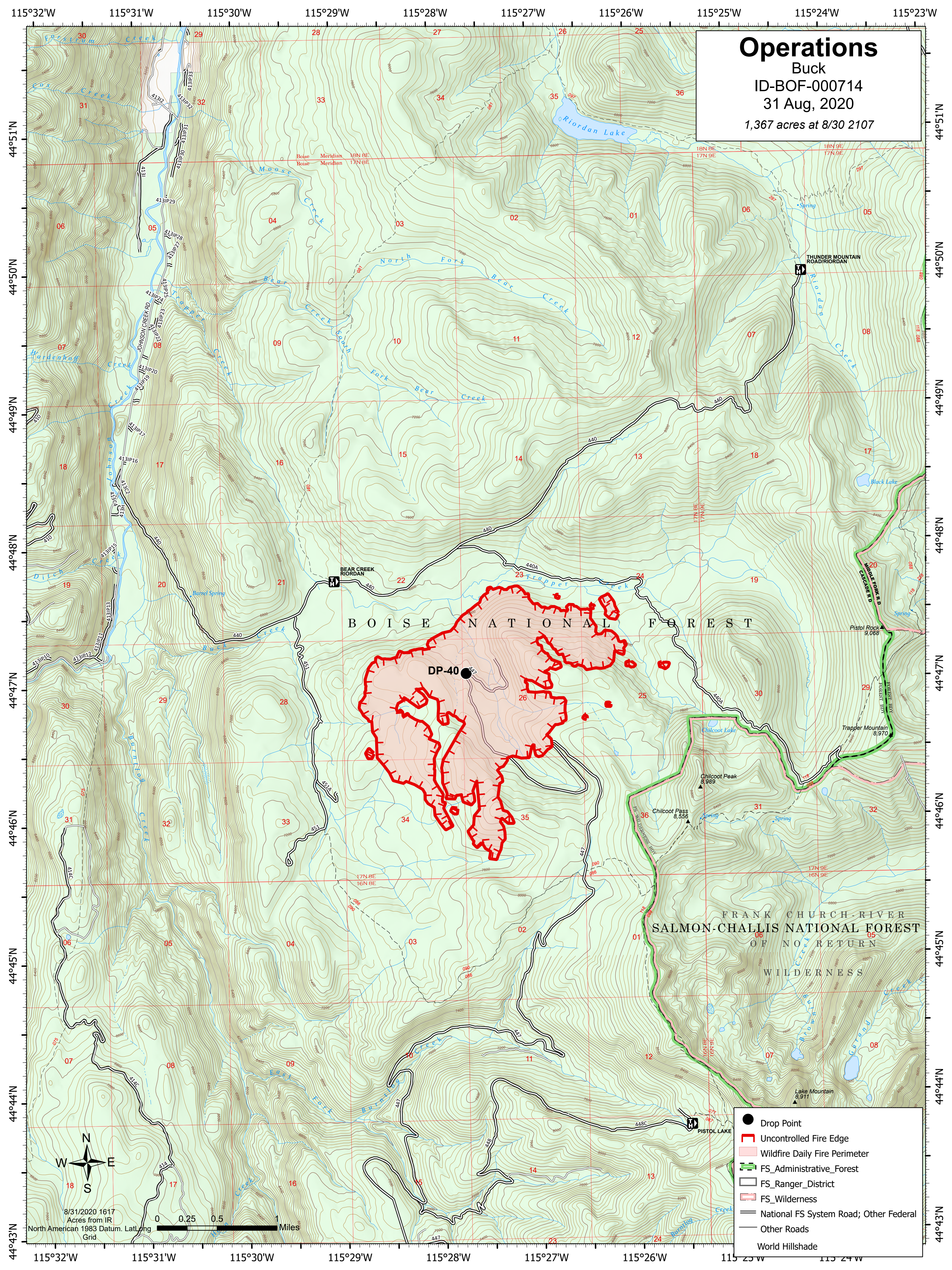


Operations

Buck
ID-BOF-000714

31 Aug, 2020

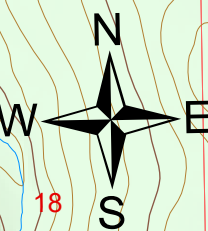
1,367 acres at 8/30 2107



BOISE NATIONAL FOREST

FRANK CHURCH-RIVER
SALMON-CHALLIS NATIONAL FOREST
OF NO RETURN
WILDERNESS

- Drop Point
- ▬ Uncontrolled Fire Edge
- ▭ Wildfire Daily Fire Perimeter
- ▬ FS_Administrative_Forest
- ▬ FS_Ranger_District
- ▭ FS_Wilderness
- ▬ National FS System Road; Other Federal
- ▬ Other Roads
- World Hillshade



8/31/2020 1617
Acres from IR
North American 1983 Datum, Lat/Long
Grid

0 0.25 0.5 1 Miles