

115°33'W 115°32'W 115°31'W 115°30'W 115°29'W 115°28'W 115°27'W 115°26'W 115°25'W 115°24'W 115°23'W 115°22'W 115°21.01'W 115°20'W

Operations

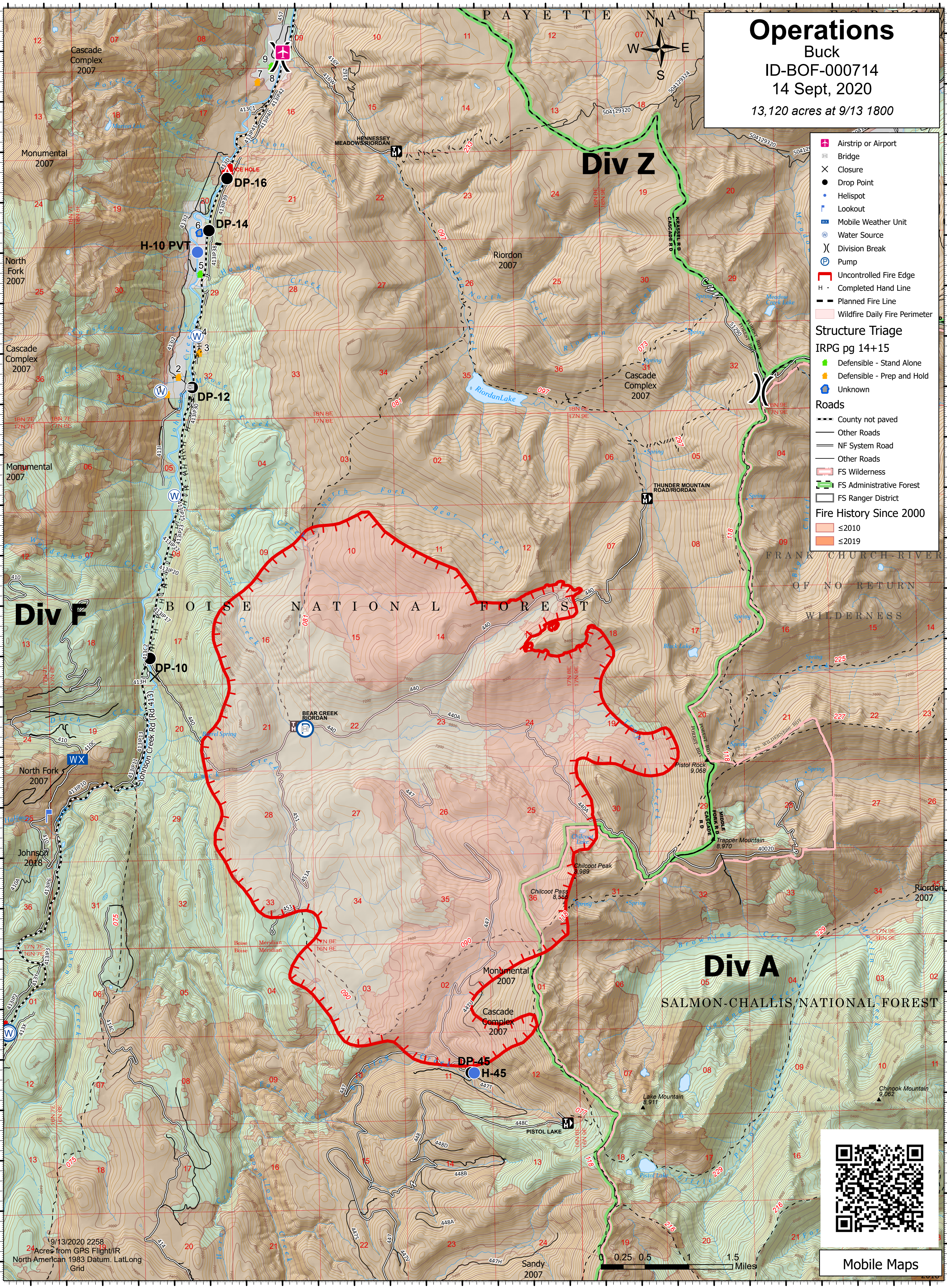
Buck
ID-BOF-000714
14 Sept, 2020
13,120 acres at 9/13 1800

- Airstrip or Airport
 - Bridge
 - Closure
 - Drop Point
 - Helispot
 - Lookout
 - Mobile Weather Unit
 - Water Source
 - Division Break
 - Pump
 - Uncontrolled Fire Edge
 - Completed Hand Line
 - Planned Fire Line
 - Wildfire Daily Fire Perimeter
- Structure Triage**
IRPG pg 14+15
- Defensible - Stand Alone
 - Defensible - Prep and Hold
 - Unknown
- Roads**
- County not paved
 - Other Roads
 - NF System Road
 - Other Roads
 - FS Wilderness
 - FS Administrative Forest
 - FS Ranger District
- Fire History Since 2000**
- ≤2010
 - ≤2019

Div Z

Div F

Div A



9/13/2020 2258
24 Acres from GPS Flight/IR
North American 1983 Datum, LatLong
Grid



Mobile Maps

115°33'W 115°32'W 115°31'W 115°30'W 115°29'W 115°28'W 115°27'W 115°26'W 115°25'W 115°24'W 115°23'W 115°22'W 115°21.01'W 115°20'W