

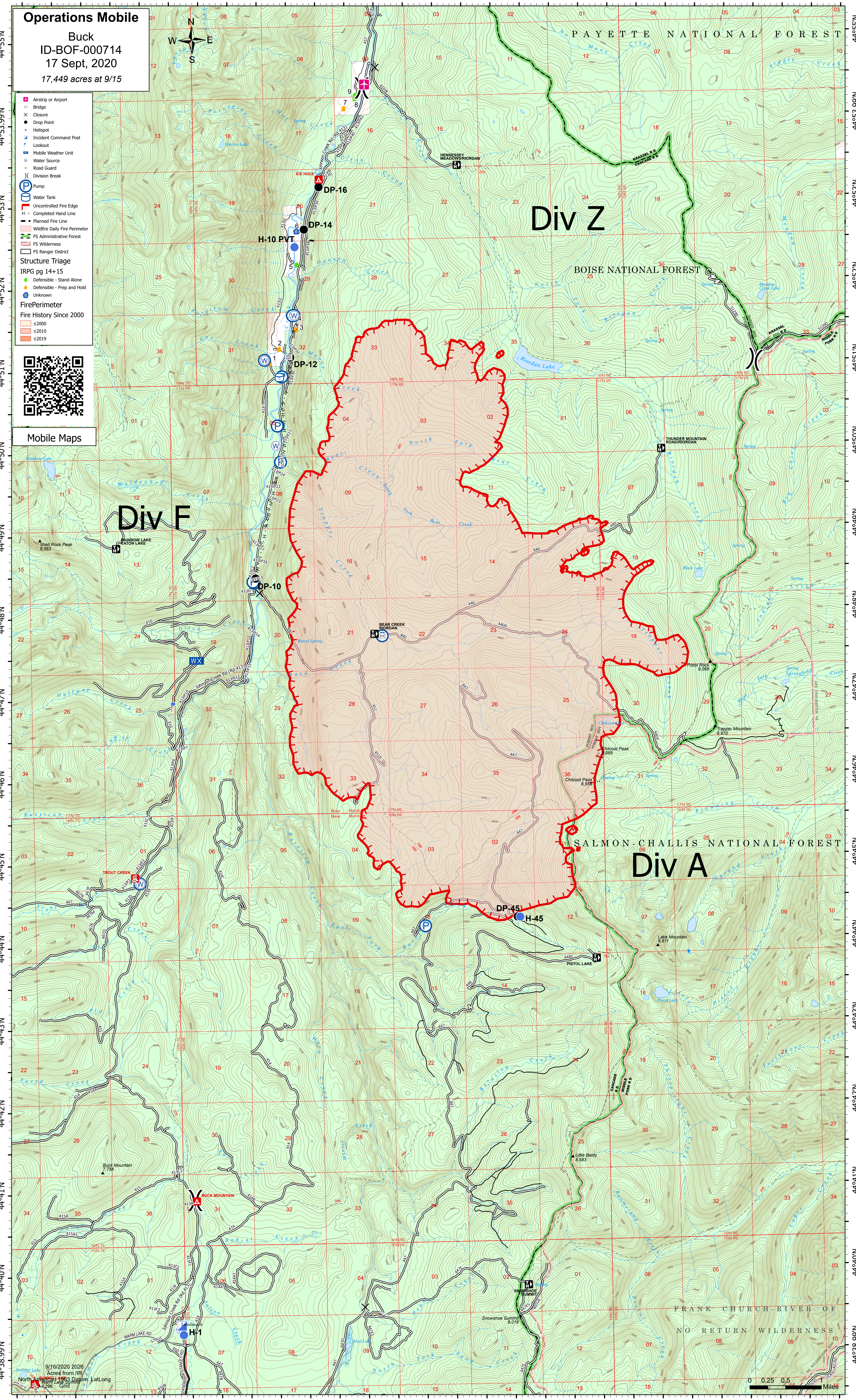
# Operations Mobile

Buck  
ID-BOF-000714  
17 Sept, 2020  
17,449 acres at 9/15

- Airstrip or Airport
  - Bridge
  - Closure
  - Drop Point
  - Helispot
  - Incident Command Post
  - Lookout
  - Mobile Weather Unit
  - Water Source
  - Road Guard
  - Division Break
  - Pump
  - Water Tank
  - Uncontrolled Fire Edge
  - Completed Hand Line
  - Planned Fire Line
  - Wildfire Daily Fire Perimeter
  - FS Administrative Forest
  - FS Wilderness
  - FS Ranger District
- ### Structure Triage
- IRPG pg 14+15
- Defensible - Stand Alone
  - Defensible - Prep and Hold
  - Unknown
- ### FirePerimeter
- Fire History Since 2000
- ≤2000
  - ≤2010
  - ≤2019



## Mobile Maps



# Div Z

# Div F

# Div A

PAYETTE NATIONAL FOREST

BOISE NATIONAL FOREST

SALMON-CHALLIS NATIONAL FOREST

FRANK CHURCH-RIVER OF NO RETURN WILDERNESS

0 0.25 0.5 1 Miles

9/16/2020 2026  
Acres from IIR  
North American Datum  
Lat/Long  
Grid