

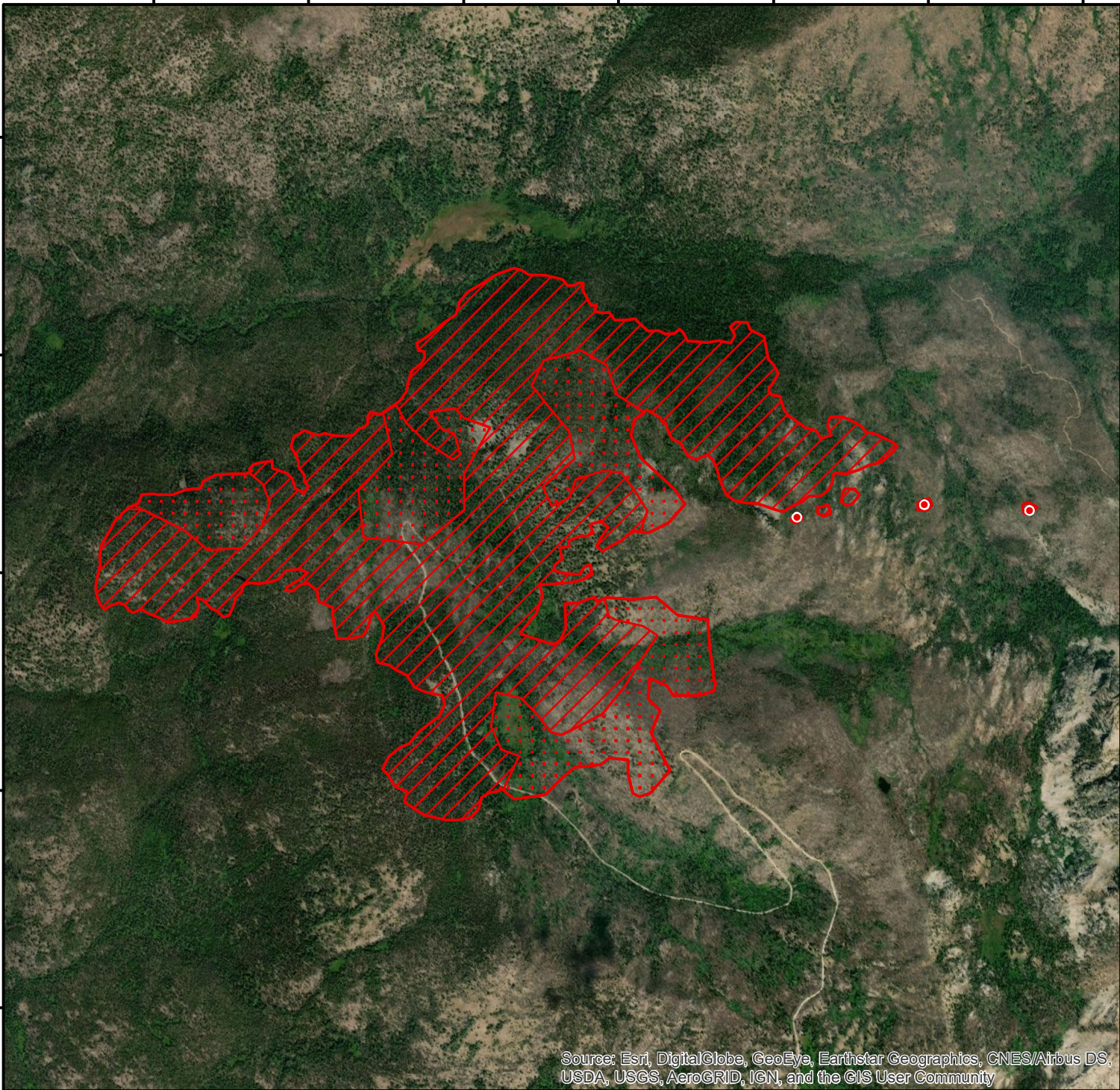
115°28'30"W 115°28'0"W 115°27'30"W 115°27'0"W 115°26'30"W 115°26'0"W 115°25'30"W

**INFRARED MAP**  
**BUCK**  
ID-BOF-000714  
Interpreted (IR) Acres: 835  
August 29, 2020 @ 2009 MDT



44°48'0"N  
44°47'30"N  
44°47'0"N  
44°46'30"N  
44°46'0"N

44°48'0"N  
44°47'30"N  
44°47'0"N  
44°46'30"N  
44°46'0"N



- Isolated Heat
- ⬭ Heat Perimeter
- ⬮ Intense Heat
- ⬯ Scattered Heat

0 0.125 0.25 0.5 Miles

115°29'0"W 115°28'30"W 115°28'0"W 115°27'30"W 115°27'0"W 115°26'30"W 115°26'0"W 115°25'30"W

Source: Esri, DigitalGlobe, GeoEye, Earthstar Geographics, CNES/Airbus DS, USDA, USGS, AeroGRID, IGN, and the GIS User Community

*IRIN: Cheron Ferland*  
*Taos, NM*  
*Nad 83 UTM Zone 11*