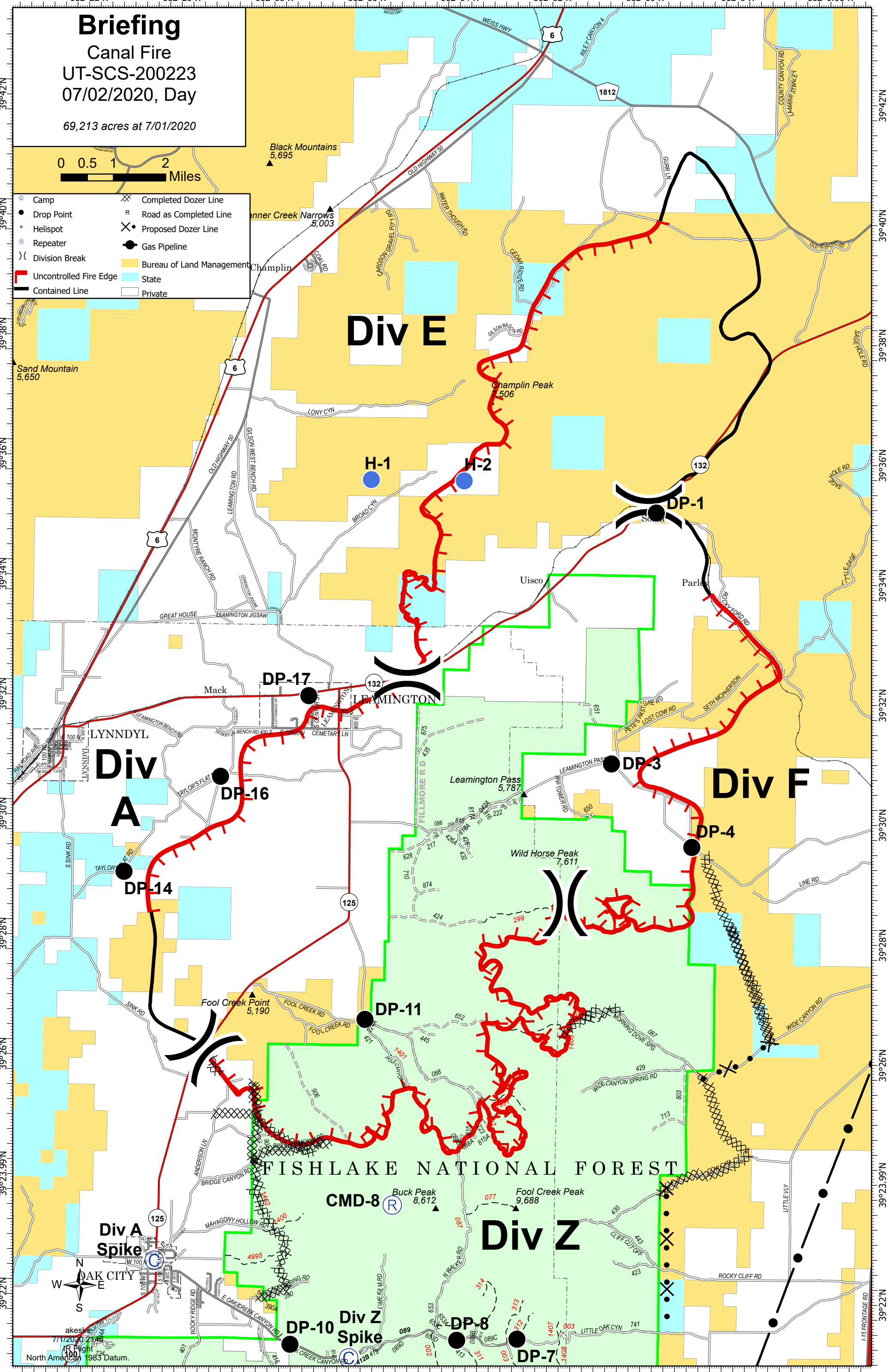


Briefing
 Canal Fire
 UT-SCS-200223
 07/02/2020, Day
 69,213 acres at 7/01/2020



- | | |
|--------------------------|-----------------------------|
| ● Camp | ⊗ Completed Dozer Line |
| ● Drop Point | R Road as Completed Line |
| ● Helispot | ⊗ Proposed Dozer Line |
| Ⓡ Repeater | ● Gas Pipeline |
|) Division Break | ■ Bureau of Land Management |
| ■ Uncontrolled Fire Edge | ■ State |
| ■ Contained Line | ■ Private |



Div A

Div E

Div F

Div Z

FISHLAKE NATIONAL FOREST

Div A Spike

Div Z Spike

CMD-8



North American 1983 Datum.