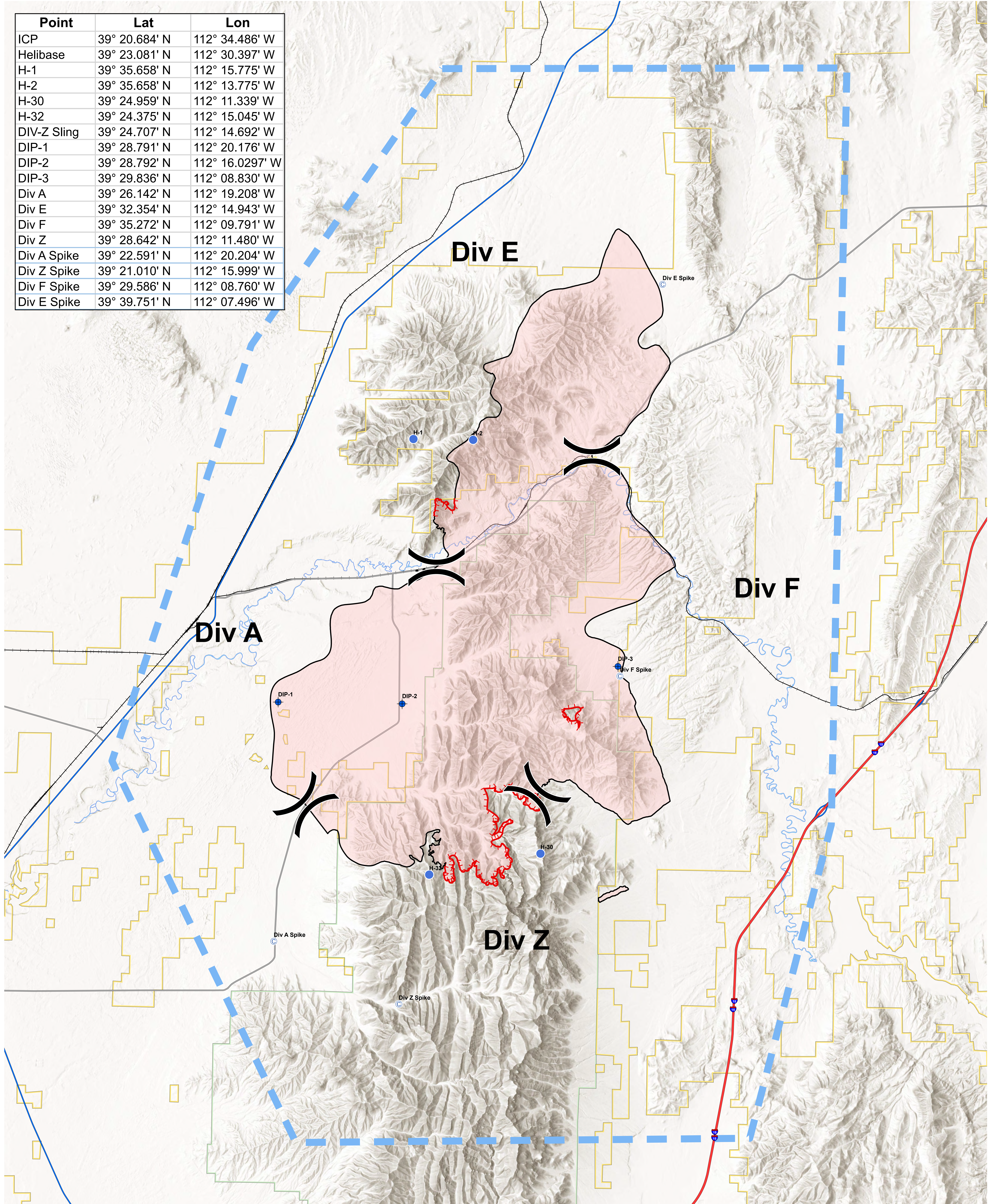
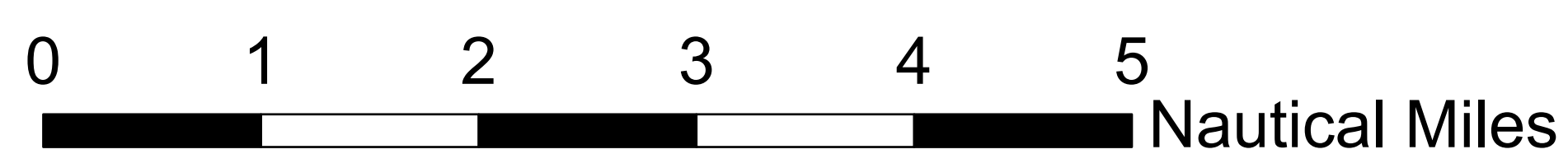
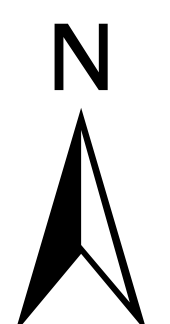


Point	Lat	Lon
ICP	39° 20.684' N	112° 34.486' W
Helibase	39° 23.081' N	112° 30.397' W
H-1	39° 35.658' N	112° 15.775' W
H-2	39° 35.658' N	112° 13.775' W
H-30	39° 24.959' N	112° 11.339' W
H-32	39° 24.375' N	112° 15.045' W
DIV-Z Sling	39° 24.707' N	112° 14.692' W
DIP-1	39° 28.791' N	112° 20.176' W
DIP-2	39° 28.792' N	112° 16.0297' W
DIP-3	39° 29.836' N	112° 08.830' W
Div A	39° 26.142' N	112° 19.208' W
Div E	39° 32.354' N	112° 14.943' W
Div F	39° 35.272' N	112° 09.791' W
Div Z	39° 28.642' N	112° 11.480' W
Div A Spike	39° 22.591' N	112° 20.204' W
Div Z Spike	39° 21.010' N	112° 15.999' W
Div F Spike	39° 29.586' N	112° 08.760' W
Div E Spike	39° 39.751' N	112° 07.496' W



- ⊙ Camp
- ⬢ Dip Site
- Helispot
- ) Division Break
- Uncontrolled Fire Edge
- Contained Line
- Temporary Flight Restriction
- Wildfire Daily Fire Perimeter



**Air Operations**  
**Canal**  
 UT-SCS-200223  
 4 July 2020  
 76,773 acres  
 as of 07/03/2017, 0117 Hrs

