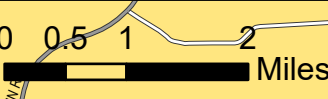
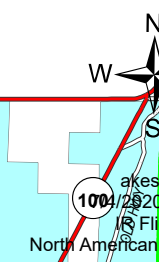
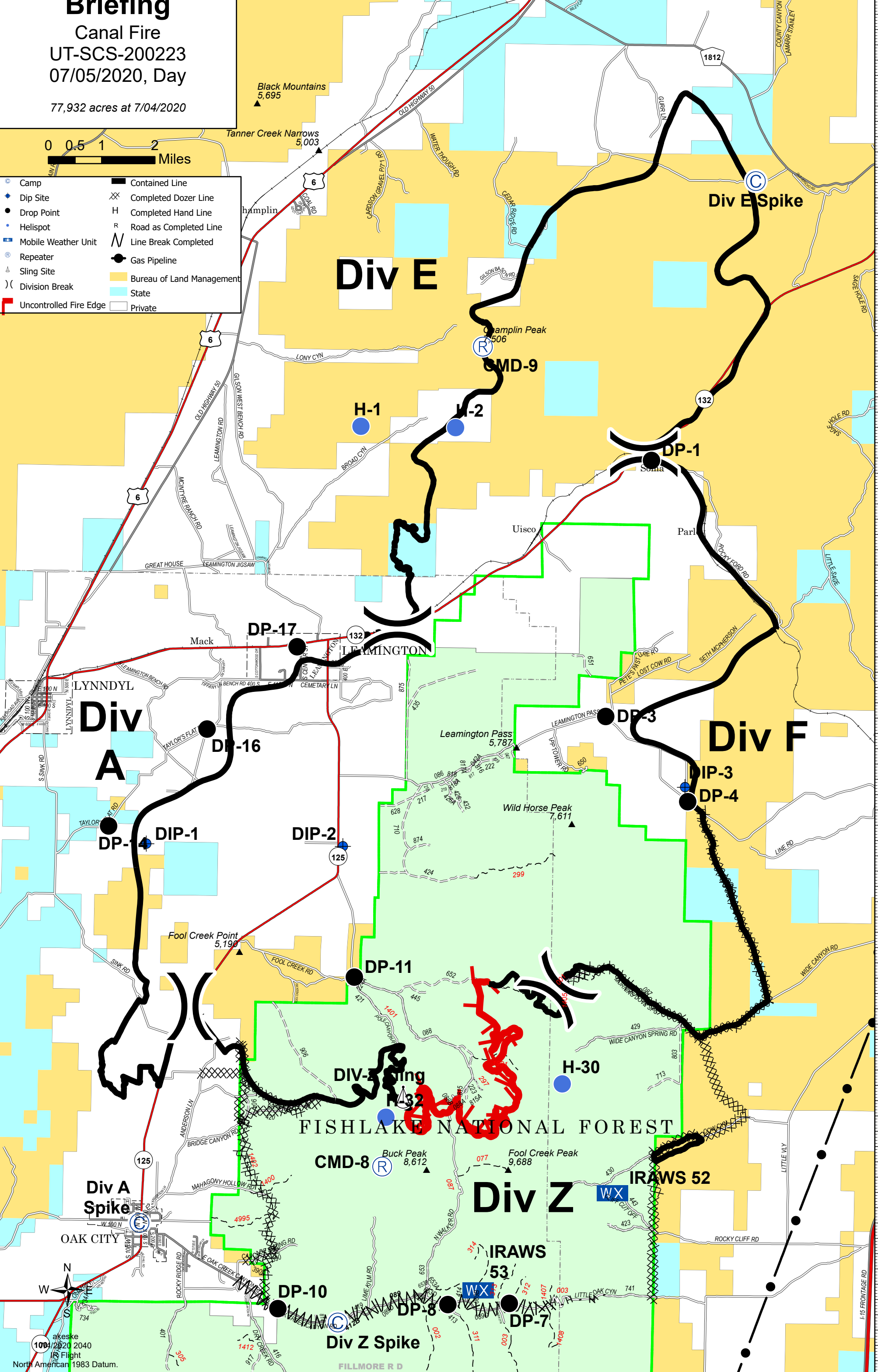


112°22'W 112°20'W 112°18'W 112°16'W 112°14'W 112°12'W 112°10'W 112°8'W 112°6.01'W

**Briefing**  
Canal Fire  
UT-SCS-200223  
07/05/2020, Day  
77,932 acres at 7/04/2020



- Camp
- Dip Site
- Drop Point
- Helispot
- Mobile Weather Unit
- Repeater
- Sling Site
- Division Break
- Uncontrolled Fire Edge
- Contained Line
- Completed Dozer Line
- Completed Hand Line
- Road as Completed Line
- Line Break Completed
- Gas Pipeline
- Bureau of Land Management
- State
- Private



North American 1983 Datum.

39°42'N 39°40'N 39°38'N 39°36'N 39°34'N 39°32'N 39°30'N 39°28'N 39°26'N 39°23.99'N 39°22'N

112°22'W 112°20'W 112°18'W 112°16'W 112°14'W 112°12'W 112°10'W 112°8'W 112°6.01'W