

110°30'0"W

110°28'0"W


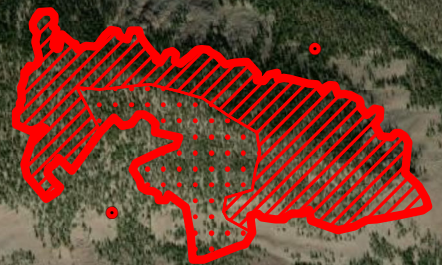
110°26'0"W

Infrared Map
Center Creek Trail (UT-ASF-100353)
 Map Date: 09/1/2020
 Imagery Date: 08/31/2020
 Imagery Time: 2251 MDT
 IR Interpreted Acres: 89 acres
 IRIN: Brian Barns

- Isolated Heat Sources
- Heat Perimeter
- Intense Heat
- Scattered Heat

NAD 1983 UTM Zone 12N

0 0.25 0.5 Miles

40°38'0"N

40°38'0"N

Source: Esri, Maxar, GeoEye, Earthstar Geographics, CNES/Airbus DS, USDA, USGS, AeroGRID, IGN, and the GIS User Community

110°30'0"W

110°28'0"W

110°26'0"W