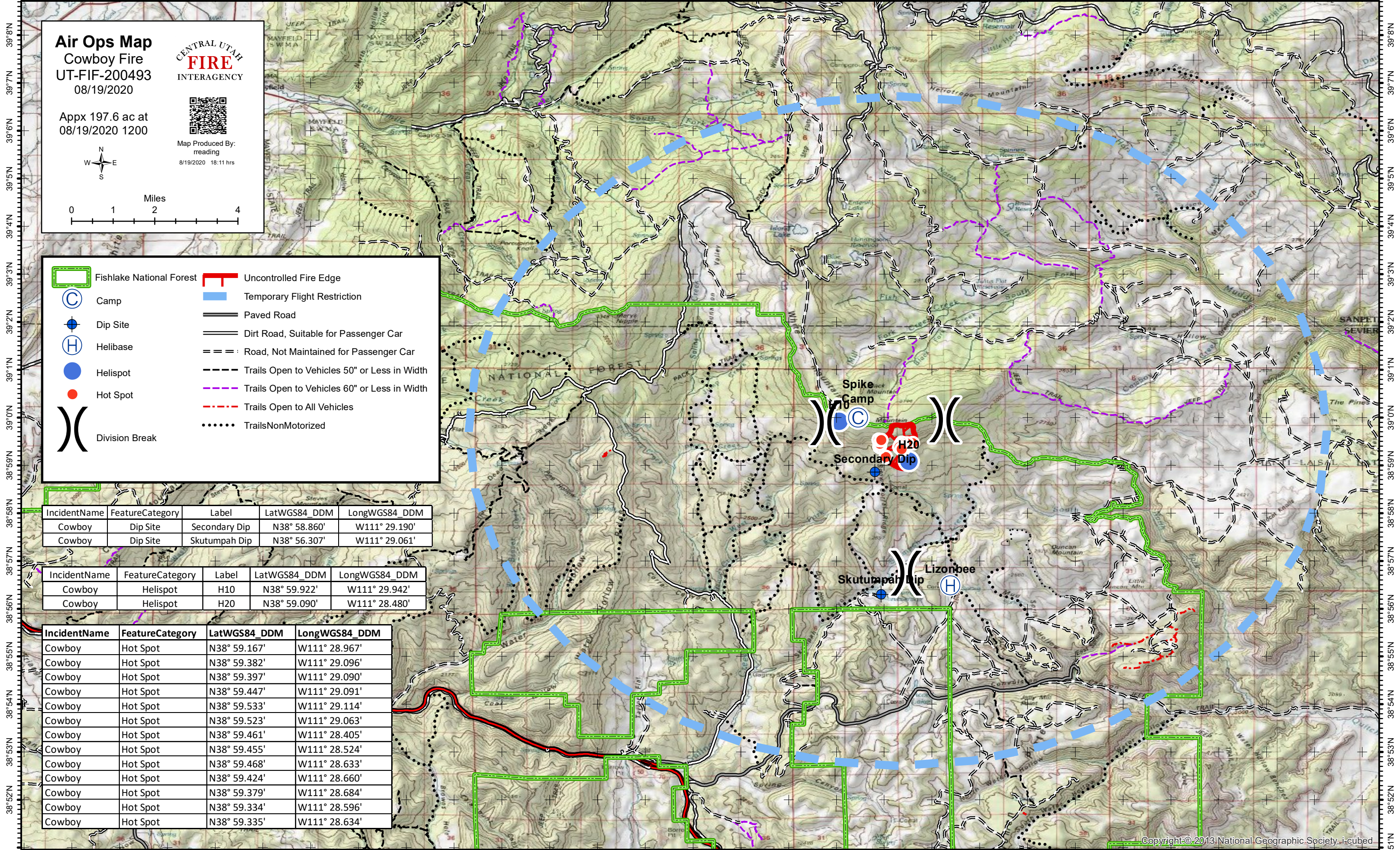


111°47'W 111°46'W 111°45'W 111°44'W 111°43'W 111°42'W 111°41'W 111°40'W 111°39'W 111°38'W 111°37'W 111°36'W 111°35'W 111°34'W 111°33'W 111°32'W 111°31'W 111°30'W 111°29'W 111°28'W 111°27'W 111°26'W 111°25'W 111°24'W 111°23'W 111°22'W 111°21'W 111°20'W 111°19'W



Air Ops Map
Cowboy Fire
UT-FIF-200493
08/19/2020

Appx 197.6 ac at
 08/19/2020 1200

CENTRAL UTAH FIRE INTERAGENCY

Map Produced By: rreading
 8/19/2020 18:11 hrs

0 1 2 4 Miles

Fishlake National Forest	Uncontrolled Fire Edge
Camp	Temporary Flight Restriction
Dip Site	Paved Road
Helibase	Dirt Road, Suitable for Passenger Car
Helispot	Road, Not Maintained for Passenger Car
Hot Spot	Trails Open to Vehicles 50" or Less in Width
Division Break	Trails Open to Vehicles 60" or Less in Width
	Trails Open to All Vehicles
	TrailsNonMotorized

IncidentName	FeatureCategory	Label	LatWGS84_DDM	LongWGS84_DDM
Cowboy	Dip Site	Secondary Dip	N38° 58.860'	W111° 29.190'
Cowboy	Dip Site	Skutumpah Dip	N38° 56.307'	W111° 29.061'

IncidentName	FeatureCategory	Label	LatWGS84_DDM	LongWGS84_DDM
Cowboy	Helispot	H10	N38° 59.922'	W111° 29.942'
Cowboy	Helispot	H20	N38° 59.090'	W111° 28.480'

IncidentName	FeatureCategory	LatWGS84_DDM	LongWGS84_DDM
Cowboy	Hot Spot	N38° 59.167'	W111° 28.967'
Cowboy	Hot Spot	N38° 59.382'	W111° 29.096'
Cowboy	Hot Spot	N38° 59.397'	W111° 29.090'
Cowboy	Hot Spot	N38° 59.447'	W111° 29.091'
Cowboy	Hot Spot	N38° 59.533'	W111° 29.114'
Cowboy	Hot Spot	N38° 59.523'	W111° 29.063'
Cowboy	Hot Spot	N38° 59.461'	W111° 28.405'
Cowboy	Hot Spot	N38° 59.455'	W111° 28.524'
Cowboy	Hot Spot	N38° 59.468'	W111° 28.633'
Cowboy	Hot Spot	N38° 59.424'	W111° 28.660'
Cowboy	Hot Spot	N38° 59.379'	W111° 28.684'
Cowboy	Hot Spot	N38° 59.334'	W111° 28.596'
Cowboy	Hot Spot	N38° 59.335'	W111° 28.634'

111°47'W 111°46'W 111°45'W 111°44'W 111°43'W 111°42'W 111°41'W 111°40'W 111°39'W 111°38'W 111°37'W 111°36'W 111°35'W 111°34'W 111°33'W 111°32'W 111°31'W 111°30'W 111°29'W 111°28'W 111°27'W 111°26'W 111°25'W 111°24'W 111°23'W 111°22'W 111°21'W 111°20'W 111°19'W