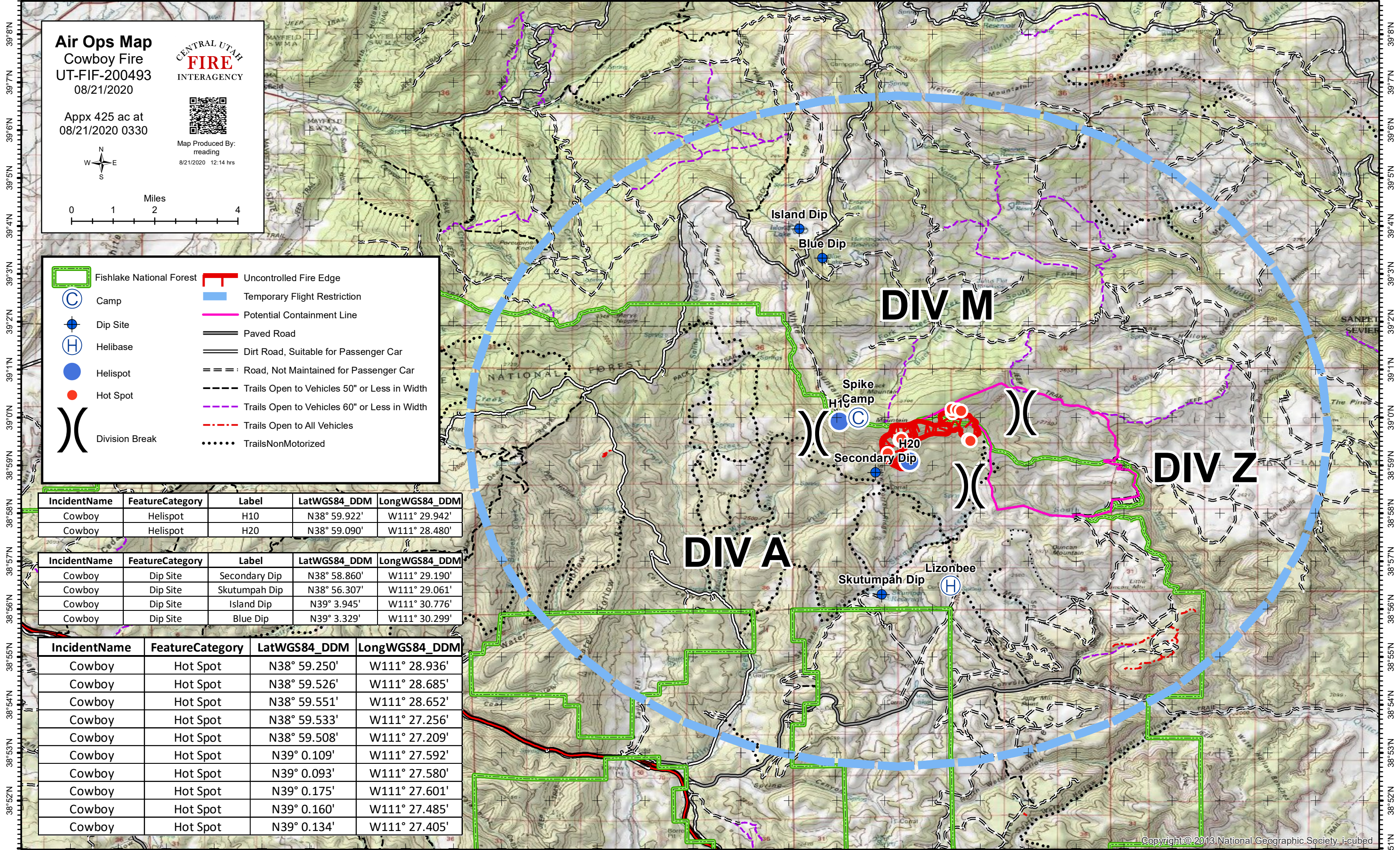


111°47'W 111°46'W 111°45'W 111°44'W 111°43'W 111°42'W 111°41'W 111°40'W 111°39'W 111°38'W 111°37'W 111°36'W 111°35'W 111°34'W 111°33'W 111°32'W 111°31'W 111°30'W 111°29'W 111°28'W 111°27'W 111°26'W 111°25'W 111°24'W 111°23'W 111°22'W 111°21'W 111°20'W 111°19'W



Air Ops Map
Cowboy Fire
UT-FIF-200493
08/21/2020



Appx 425 ac at
08/21/2020 0330



0 1 2 4
Miles

Map Produced By:
rreading
8/21/2020 12:14 hrs

	Fishlake National Forest		Uncontrolled Fire Edge
	Camp		Temporary Flight Restriction
	Dip Site		Potential Containment Line
	Helibase		Paved Road
	Helispot		Dirt Road, Suitable for Passenger Car
	Hot Spot		Road, Not Maintained for Passenger Car
	Division Break		Trails Open to Vehicles 50" or Less in Width
			Trails Open to Vehicles 60" or Less in Width
			Trails Open to All Vehicles
			Trails Non-Motorized

IncidentName	FeatureCategory	Label	LatWGS84_DDM	LongWGS84_DDM
Cowboy	Helispot	H10	N38° 59.922'	W111° 29.942'
Cowboy	Helispot	H20	N38° 59.090'	W111° 28.480'

IncidentName	FeatureCategory	Label	LatWGS84_DDM	LongWGS84_DDM
Cowboy	Dip Site	Secondary Dip	N38° 58.860'	W111° 29.190'
Cowboy	Dip Site	Skutumpah Dip	N38° 56.307'	W111° 29.061'
Cowboy	Dip Site	Island Dip	N39° 3.945'	W111° 30.776'
Cowboy	Dip Site	Blue Dip	N39° 3.329'	W111° 30.299'

IncidentName	FeatureCategory	LatWGS84_DDM	LongWGS84_DDM
Cowboy	Hot Spot	N38° 59.250'	W111° 28.936'
Cowboy	Hot Spot	N38° 59.526'	W111° 28.685'
Cowboy	Hot Spot	N38° 59.551'	W111° 28.652'
Cowboy	Hot Spot	N38° 59.533'	W111° 27.256'
Cowboy	Hot Spot	N38° 59.508'	W111° 27.209'
Cowboy	Hot Spot	N39° 0.109'	W111° 27.592'
Cowboy	Hot Spot	N39° 0.093'	W111° 27.580'
Cowboy	Hot Spot	N39° 0.175'	W111° 27.601'
Cowboy	Hot Spot	N39° 0.160'	W111° 27.485'
Cowboy	Hot Spot	N39° 0.134'	W111° 27.405'

111°47'W 111°46'W 111°45'W 111°44'W 111°43'W 111°42'W 111°41'W 111°40'W 111°39'W 111°38'W 111°37'W 111°36'W 111°35'W 111°34'W 111°33'W 111°32'W 111°31'W 111°30'W 111°29'W 111°28'W 111°27'W 111°26'W 111°25'W 111°24'W 111°23'W 111°22'W 111°21'W 111°20'W 111°19'W