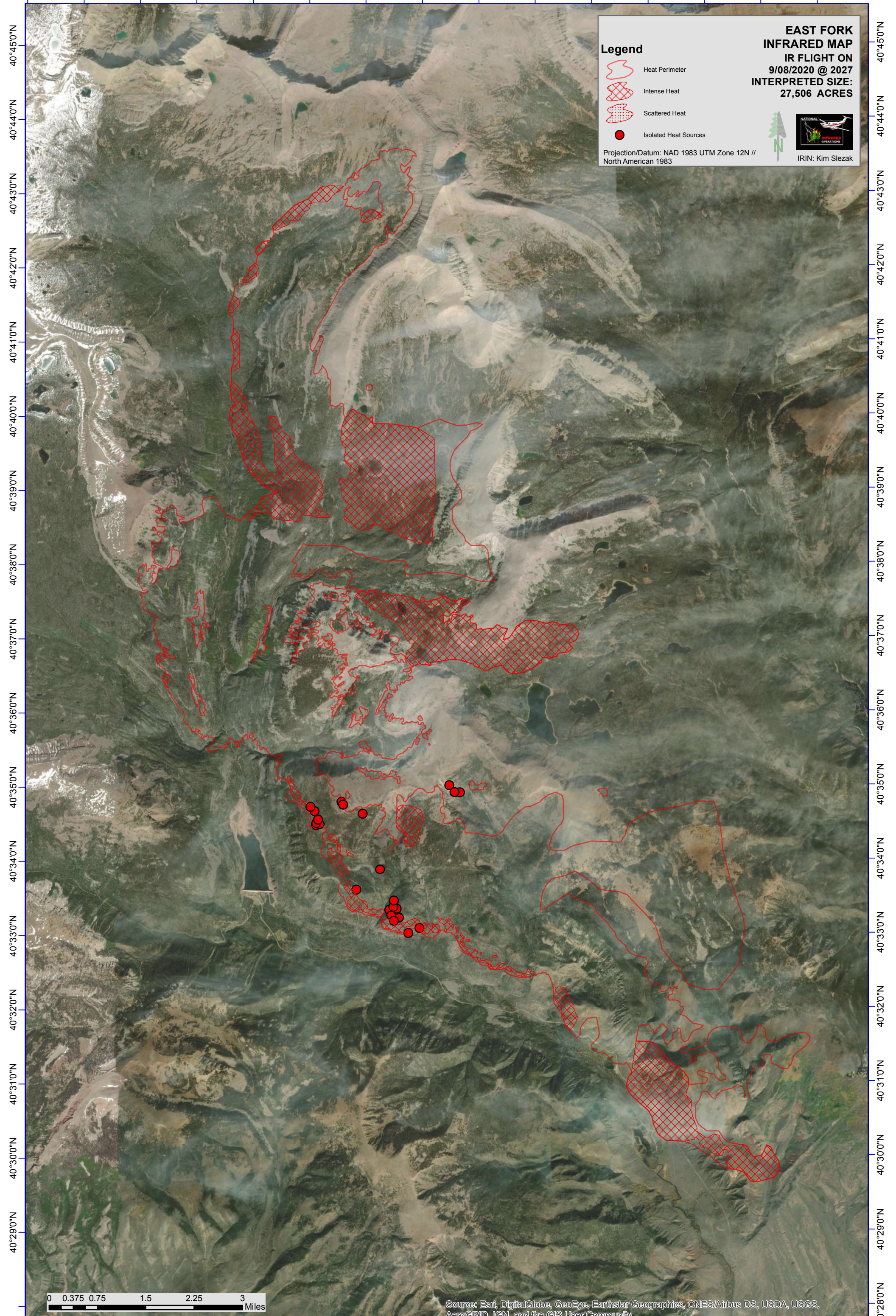


110°46'0"W 110°45'0"W 110°44'0"W 110°43'0"W 110°42'0"W 110°41'0"W 110°40'0"W 110°39'0"W 110°38'0"W 110°37'0"W 110°36'0"W 110°35'0"W 110°34'0"W 110°33'0"W 110°32'0"W



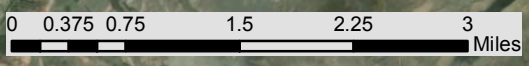
EAST FORK INFRARED MAP
 IR FLIGHT ON
 9/08/2020 @ 2027
 INTERPRETED SIZE:
 27,506 ACRES

Legend

- Heat Perimeter
- Intense Heat
- Scattered Heat
- Isolated Heat Sources

Projection/Datum: NAD 1983 UTM Zone 12N // North American 1983

IRIN: Kim Slezak



Source: Esri, DigitalGlobe, GeoEye, Earthstar Geographics, CNES/Airbus DS, USDA, USGS, AeroGRID, IGN, and the GIS User Community

110°46'0"W 110°45'0"W 110°44'0"W 110°43'0"W 110°42'0"W 110°41'0"W 110°40'0"W 110°39'0"W 110°38'0"W 110°37'0"W 110°36'0"W 110°35'0"W 110°34'0"W 110°33'0"W 110°32'0"W