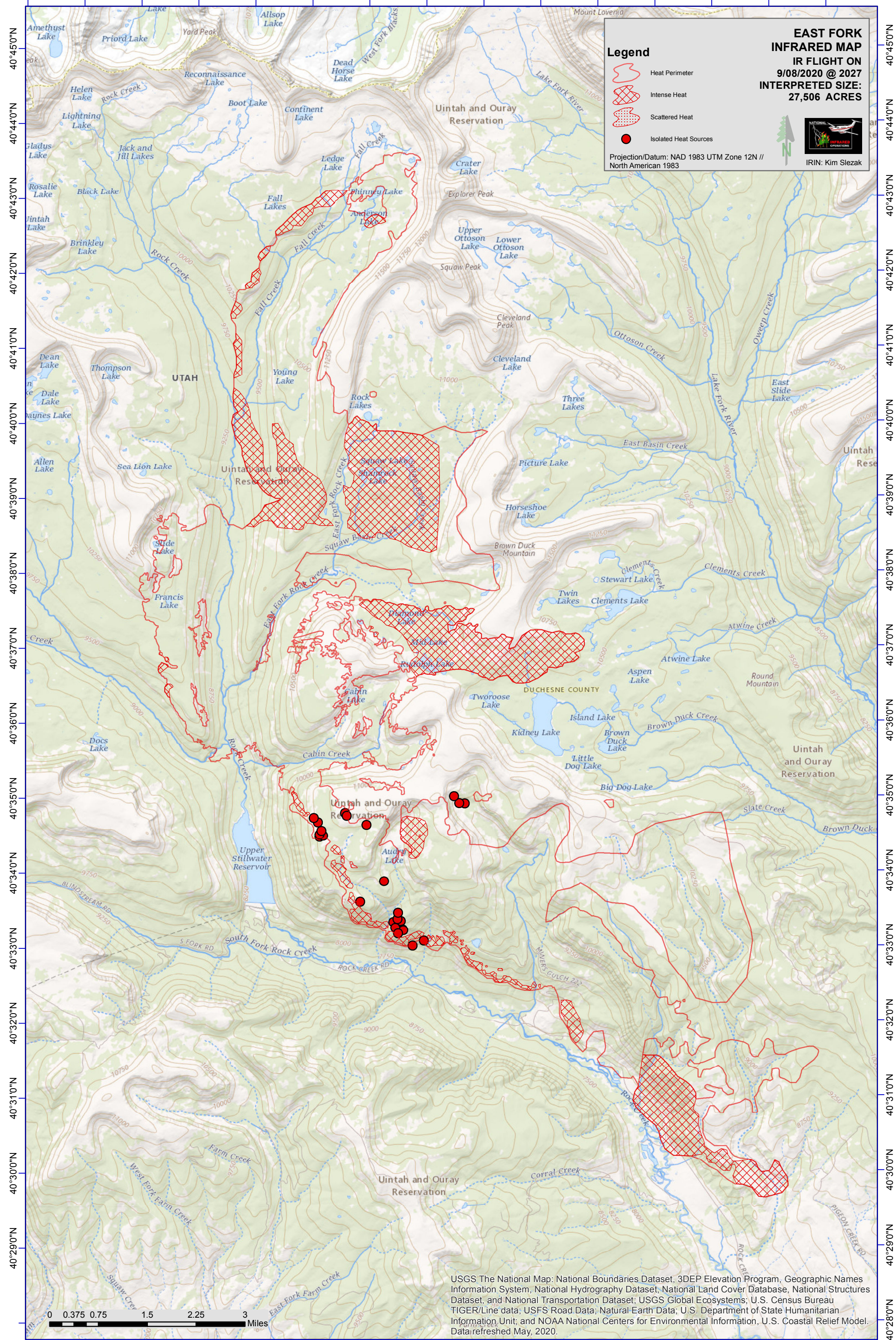


110°46'0"W 110°45'0"W 110°44'0"W 110°43'0"W 110°42'0"W 110°41'0"W 110°40'0"W 110°39'0"W 110°38'0"W 110°37'0"W 110°36'0"W 110°35'0"W 110°34'0"W 110°33'0"W 110°32'0"W



EAST FORK INFRARED MAP
 IR FLIGHT ON
 9/08/2020 @ 2027
 INTERPRETED SIZE:
 27,506 ACRES

Legend

- Heat Perimeter
- Intense Heat
- Scattered Heat
- Isolated Heat Sources

Projection/Datum: NAD 1983 UTM Zone 12N // North American 1983

IRIN: Kim Slezak

USGS The National Map: National Boundaries Dataset, 3DEP Elevation Program, Geographic Names Information System, National Hydrography Dataset, National Land Cover Database, National Structures Dataset, and National Transportation Dataset; USGS Global Ecosystems; U.S. Census Bureau TIGER/Line data; USFS Road Data; Natural Earth Data; U.S. Department of State Humanitarian Information Unit; and NOAA National Centers for Environmental Information, U.S. Coastal Relief Model. Data refreshed May, 2020.

