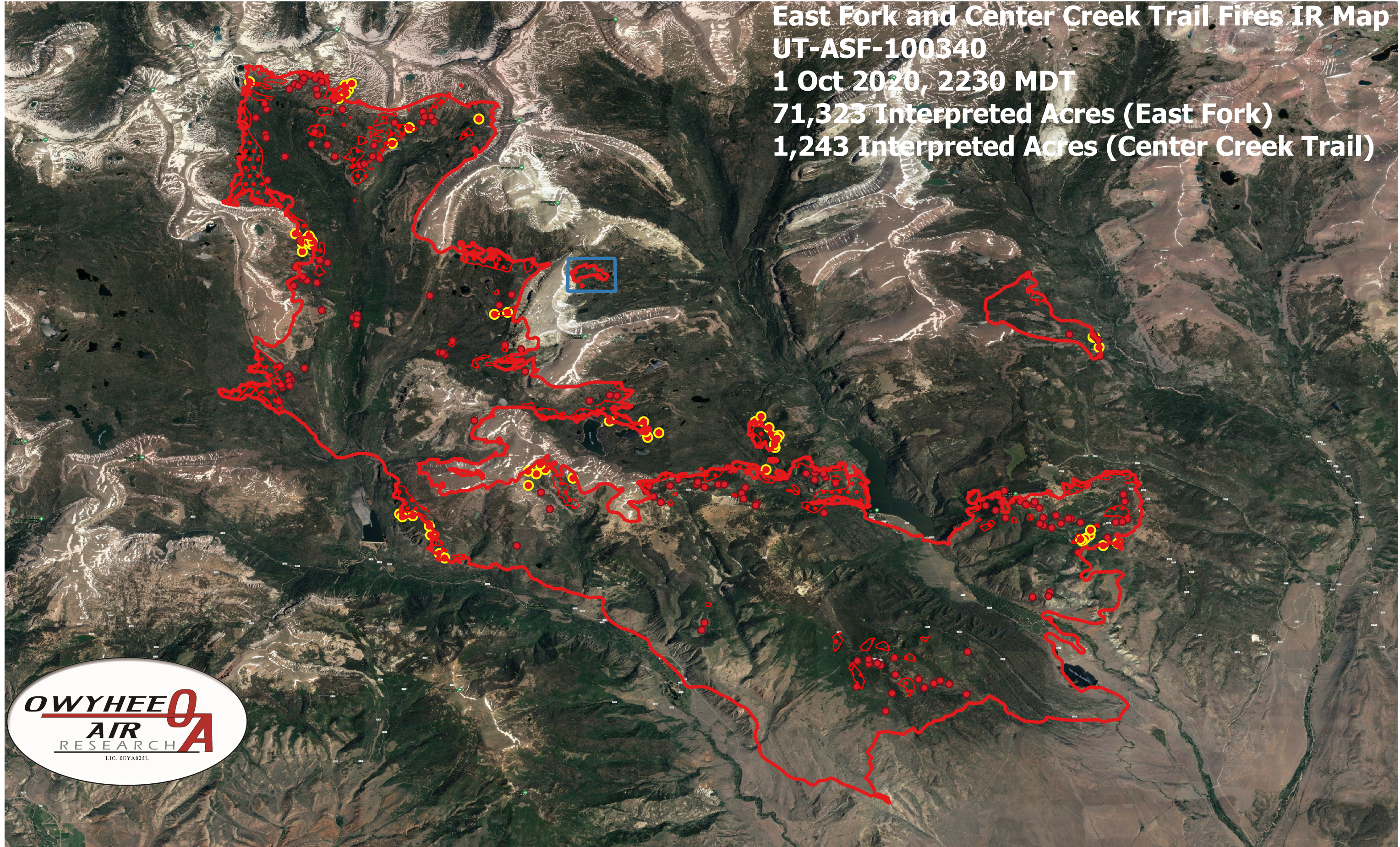


East Fork and Center Creek Trail Fires IR Map
UT-ASF-100340
1 Oct 2020, 2230 MDT
71,323 Interpreted Acres (East Fork)
1,243 Interpreted Acres (Center Creek Trail)



- BurnPerimeter
- ScatteredHeat
- IntenseHeat
- IsolatedHeat
- PriorityIsolatedHeat
- NotSurveyed_SeeLog

Scale: 1:80,000

Projection: WGS 84

Produced by Owyhee Air Research, Inc.

IR Interpreter: Courtney Holley

fire@owyheear.com (208) 442-5405

