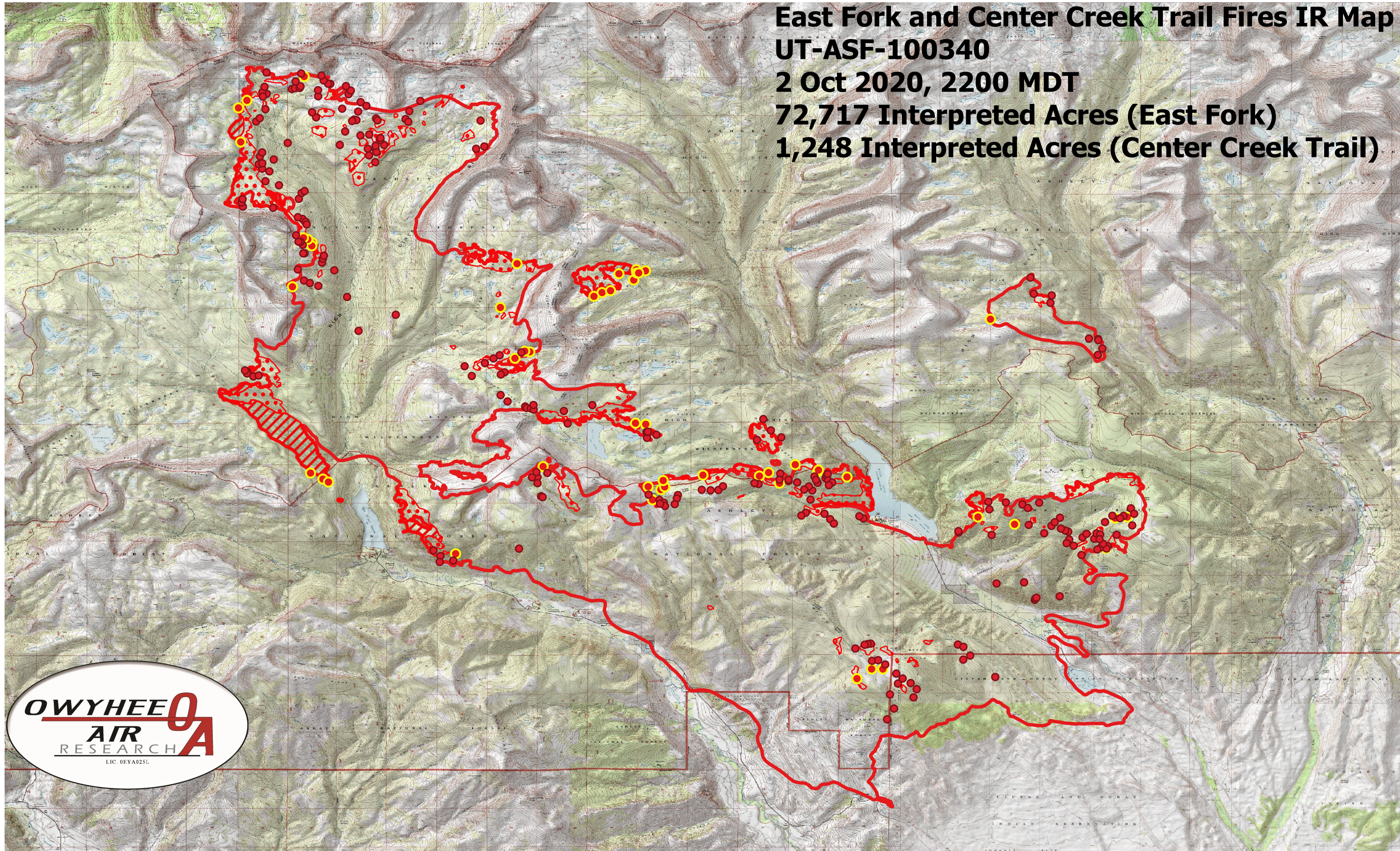


East Fork and Center Creek Trail Fires IR Map
UT-ASF-100340
2 Oct 2020, 2200 MDT
72,717 Interpreted Acres (East Fork)
1,248 Interpreted Acres (Center Creek Trail)



- Legend**
- IR Priority Isolated Heat
 - IR Isolated Heat
 - ▭ Burn Perimeter
 - ▨ IR Intense Heat
 - ▤ IR Scattered Heat

Scale: 1:80,000

Projection: WGS 84

Produced by Owyhee Air Research, Inc.

IR Interpreter: Courtney Holley

fire@owyheear.com (208) 442-5405

