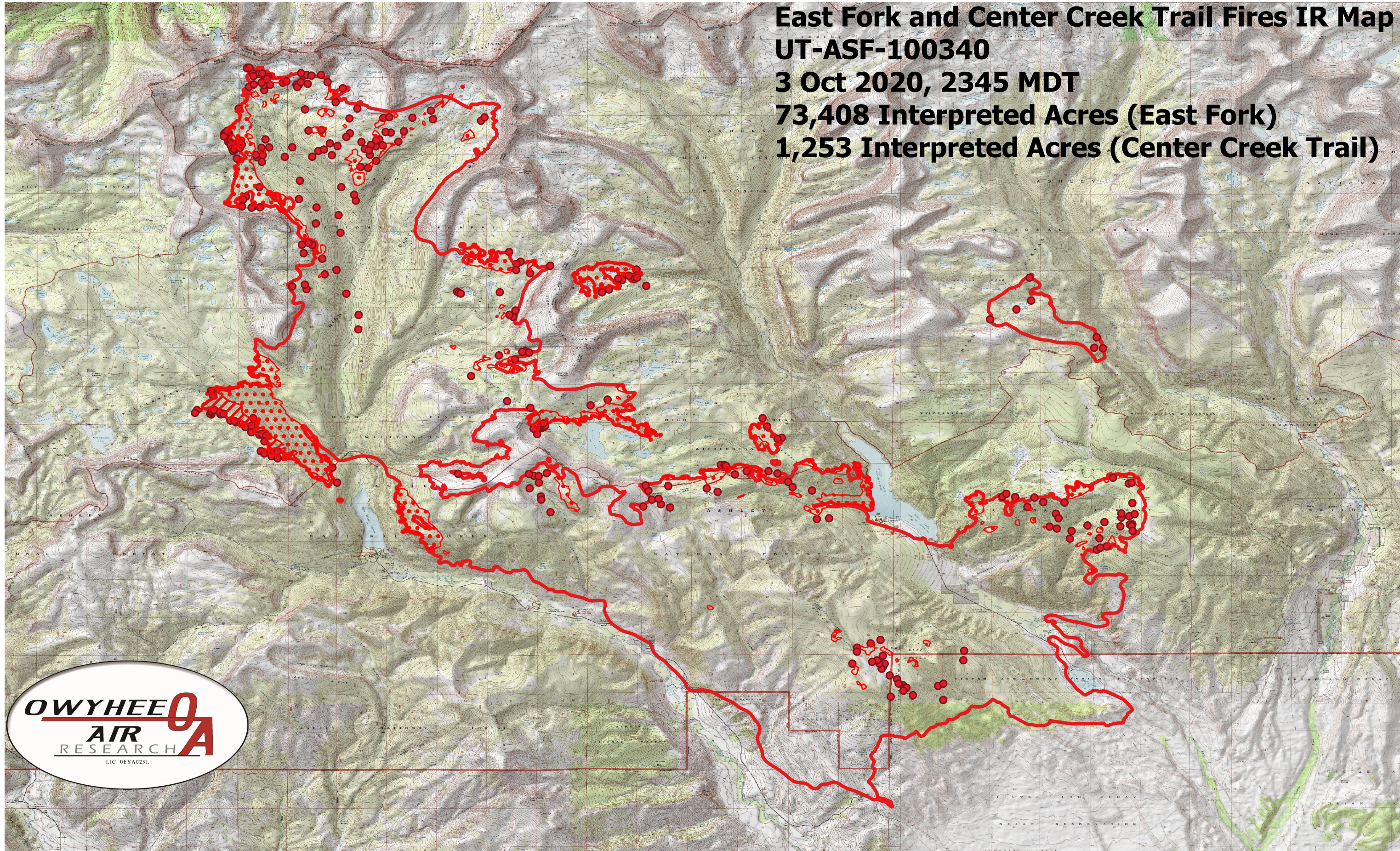


**East Fork and Center Creek Trail Fires IR Map**  
**UT-ASF-100340**  
**3 Oct 2020, 2345 MDT**  
**73,408 Interpreted Acres (East Fork)**  
**1,253 Interpreted Acres (Center Creek Trail)**



- Legend**
- IR Priority Isolated Heat
  - IR Isolated Heat
  - ▭ Burn Perimeter
  - ▨ IR Intense Heat
  - ▤ IR Scattered Heat

Scale: 1:80,000

Projection: WGS 84

Produced by Owyhee Air Research, Inc.

IR Interpreter: Courtney Holley

fire@owyheear.com (208) 442-5405

