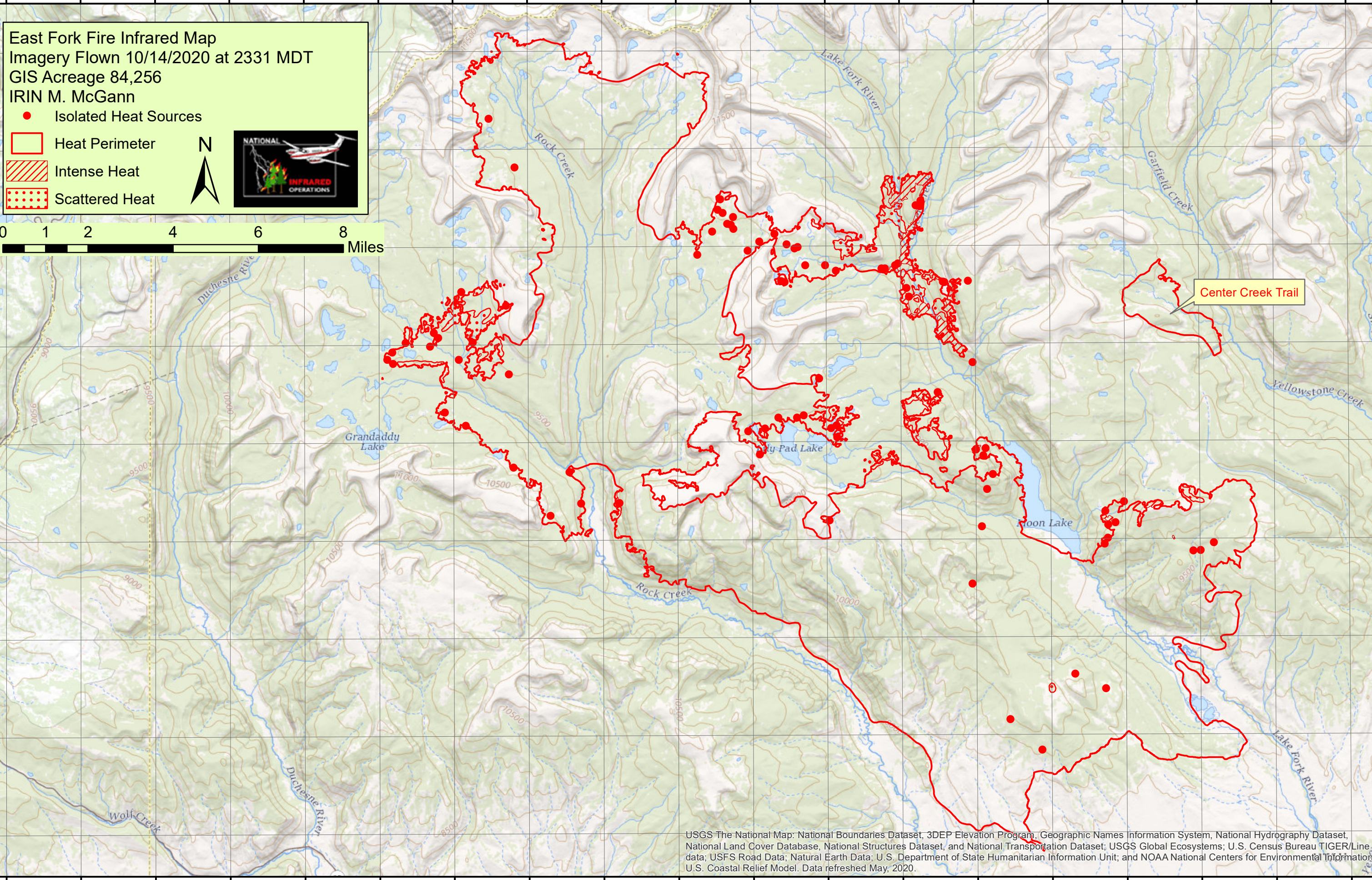


110°58'0"W 110°56'0"W 110°54'0"W 110°52'0"W 110°50'0"W 110°48'0"W 110°46'0"W 110°44'0"W 110°42'0"W 110°40'0"W 110°38'0"W 110°36'0"W 110°34'0"W 110°32'0"W 110°30'0"W 110°28'0"W 110°26'0"W 110°24'0"W 110°22'0"W



East Fork Fire Infrared Map
 Imagery Flown 10/14/2020 at 2331 MDT
 GIS Acreage 84,256
 IRIN M. McGann

- Isolated Heat Sources
- Heat Perimeter
- ▨ Intense Heat
- Scattered Heat

N

0 1 2 4 6 8 Miles

Center Creek Trail

USGS The National Map: National Boundaries Dataset, 3DEP Elevation Program, Geographic Names Information System, National Hydrography Dataset, National Land Cover Database, National Structures Dataset, and National Transportation Dataset; USGS Global Ecosystems; U.S. Census Bureau TIGER/Line data; USFS Road Data; Natural Earth Data; U.S. Department of State Humanitarian Information Unit; and NOAA National Centers for Environmental Information. U.S. Coastal Relief Model. Data refreshed May, 2020.

110°58'0"W 110°56'0"W 110°54'0"W 110°52'0"W 110°50'0"W 110°48'0"W 110°46'0"W 110°44'0"W 110°42'0"W 110°40'0"W 110°38'0"W 110°36'0"W 110°34'0"W 110°32'0"W 110°30'0"W 110°28'0"W 110°26'0"W 110°24'0"W 110°22'0"W

40°44'0"N
40°42'0"N
40°40'0"N
40°38'0"N
40°36'0"N
40°34'0"N
40°32'0"N
40°30'0"N
40°28'0"N

40°44'0"N
40°42'0"N
40°40'0"N
40°38'0"N
40°36'0"N
40°34'0"N
40°32'0"N
40°30'0"N
40°28'0"N