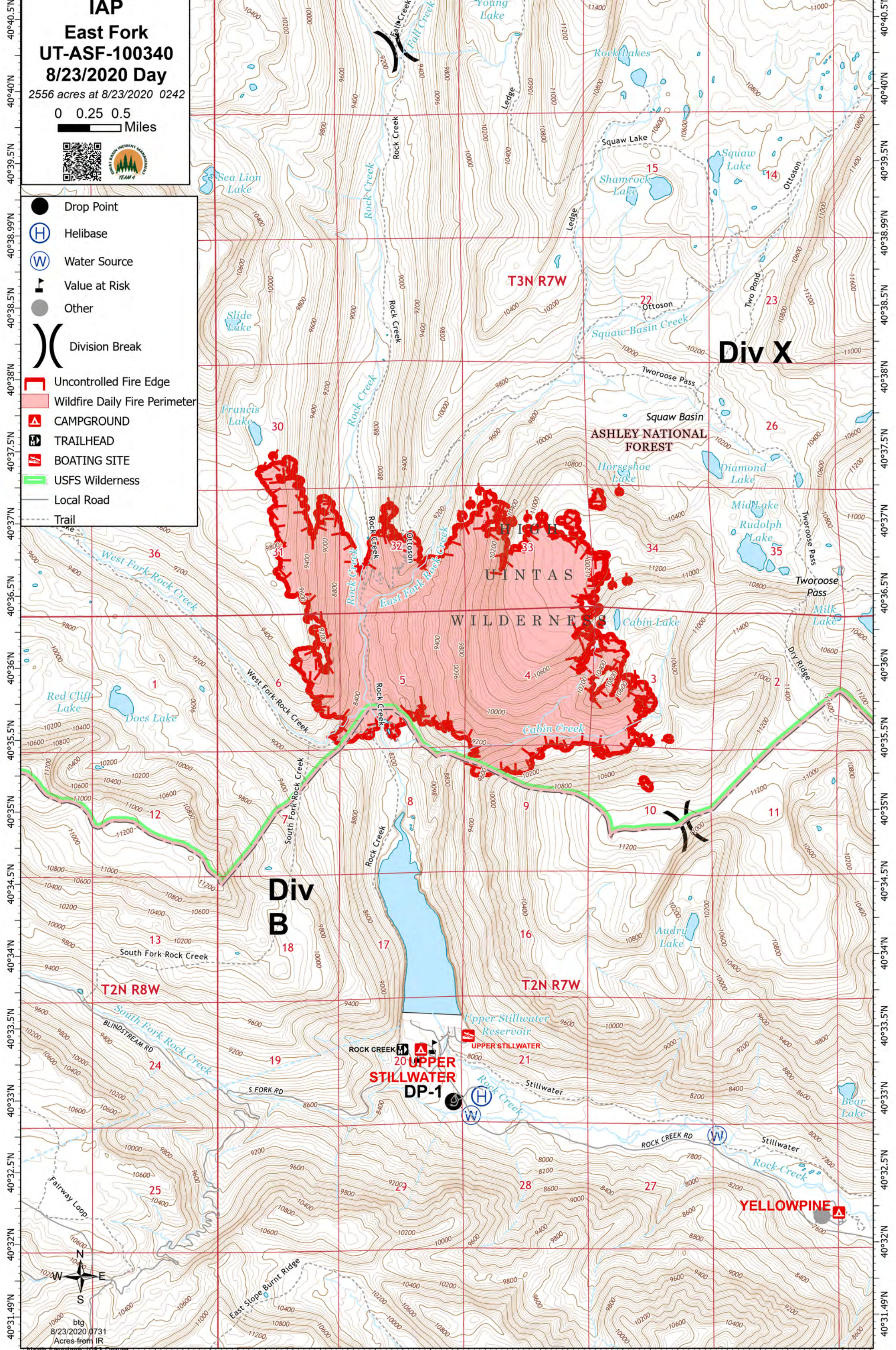


110°45.5'W 110°45'W 110°44.5'W 110°44'W 110°43.51'W 110°43'W 110°42.5'W 110°42'W 110°41.5'W 110°41'W 110°40.5'W 110°40'W 110°39.5'W 110°39'W 110°38.5'W 110°38'W



IAP
East Fork
UT-ASF-100340
8/23/2020 Day
 2556 acres at 8/23/2020 0242

0 0.25 0.5
 Miles

- Drop Point
- Helibase
- Water Source
- Value at Risk
- Other
- Division Break
- Uncontrolled Fire Edge
- Wildfire Daily Fire Perimeter
- CAMPGROUND
- TRAILHEAD
- BOATING SITE
- USFS Wilderness
- Local Road
- Trail

North American 1983 Datum. 110°45.5'W 110°45'W 110°44.5'W 110°44'W 110°43.51'W 110°43'W 110°42.5'W 110°42'W 110°41.5'W 110°41'W 110°40.5'W 110°40'W 110°39.5'W 110°39'W 110°38.5'W 110°38'W

Div X

Div B

UPPER STILLWATER DP-1

YELLOWPINE

ASHLEY NATIONAL FOREST
WILDERNESS
UINTAS

btg
8/23/2020 0731
Acres from IR