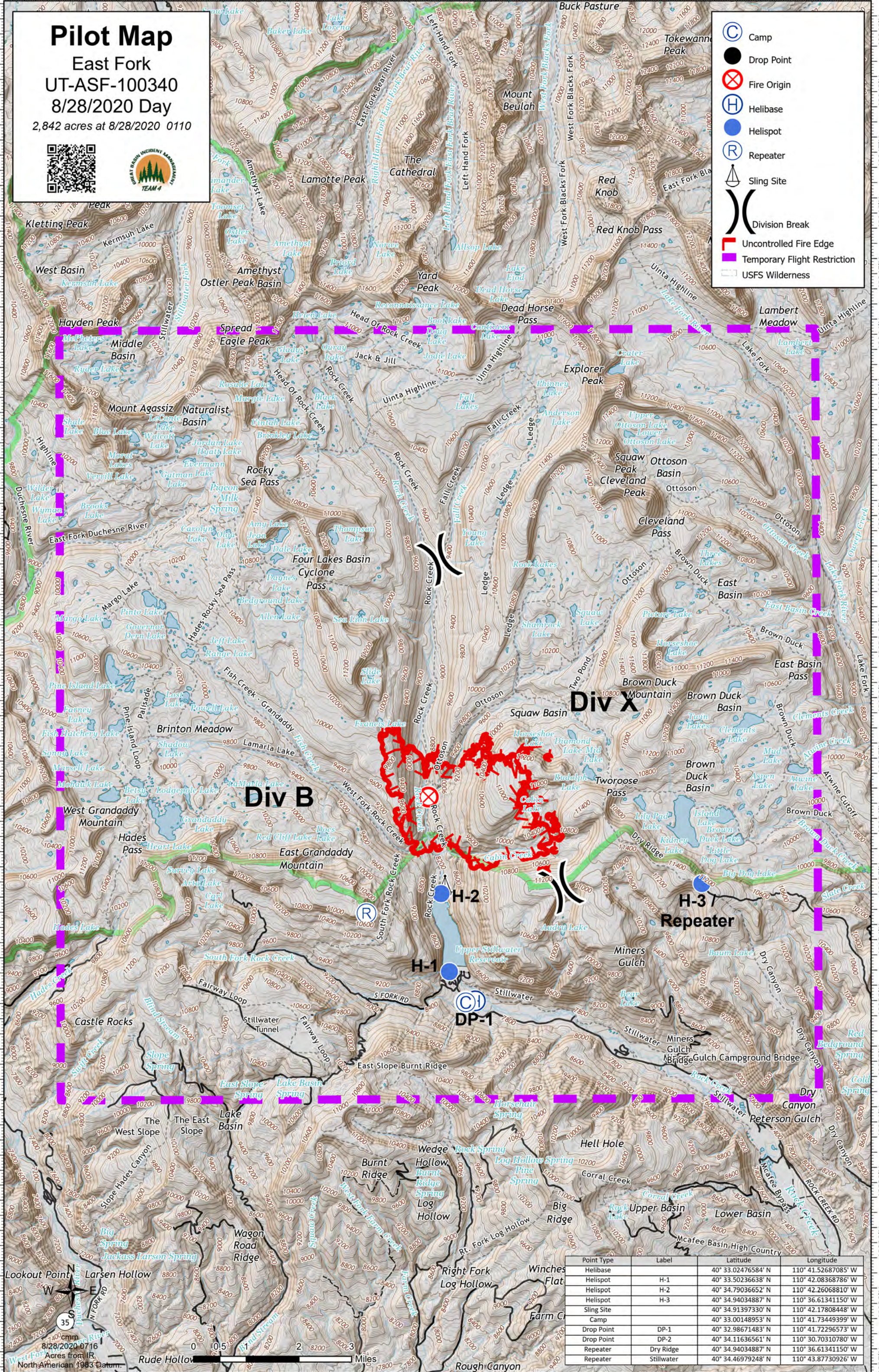


# Pilot Map

East Fork  
UT-ASF-100340  
8/28/2020 Day  
2,842 acres at 8/28/2020 0110



- Camp
- Drop Point
- Fire Origin
- Helibase
- Helispot
- Repeater
- Sling Site
- Division Break
- Uncontrolled Fire Edge
- Temporary Flight Restriction
- USFS Wilderness



| Point Type | Label      | Latitude           | Longitude           |
|------------|------------|--------------------|---------------------|
| Helibase   |            | 40° 33.02476584' N | 110° 41.52687085' W |
| Helispot   | H-1        | 40° 33.50236638' N | 110° 42.08368786' W |
| Helispot   | H-2        | 40° 34.79036652' N | 110° 42.26068810' W |
| Helispot   | H-3        | 40° 34.94034887' N | 110° 36.61341150' W |
| Sling Site |            | 40° 34.91397330' N | 110° 42.17808448' W |
| Camp       |            | 40° 33.00148953' N | 110° 41.73449399' W |
| Drop Point | DP-1       | 40° 32.98671483' N | 110° 41.72296573' W |
| Drop Point | DP-2       | 40° 34.11636561' N | 110° 30.70310780' W |
| Repeater   | Dry Ridge  | 40° 34.94034887' N | 110° 36.61341150' W |
| Repeater   | Stillwater | 40° 34.46979248' N | 110° 43.87730926' W |