

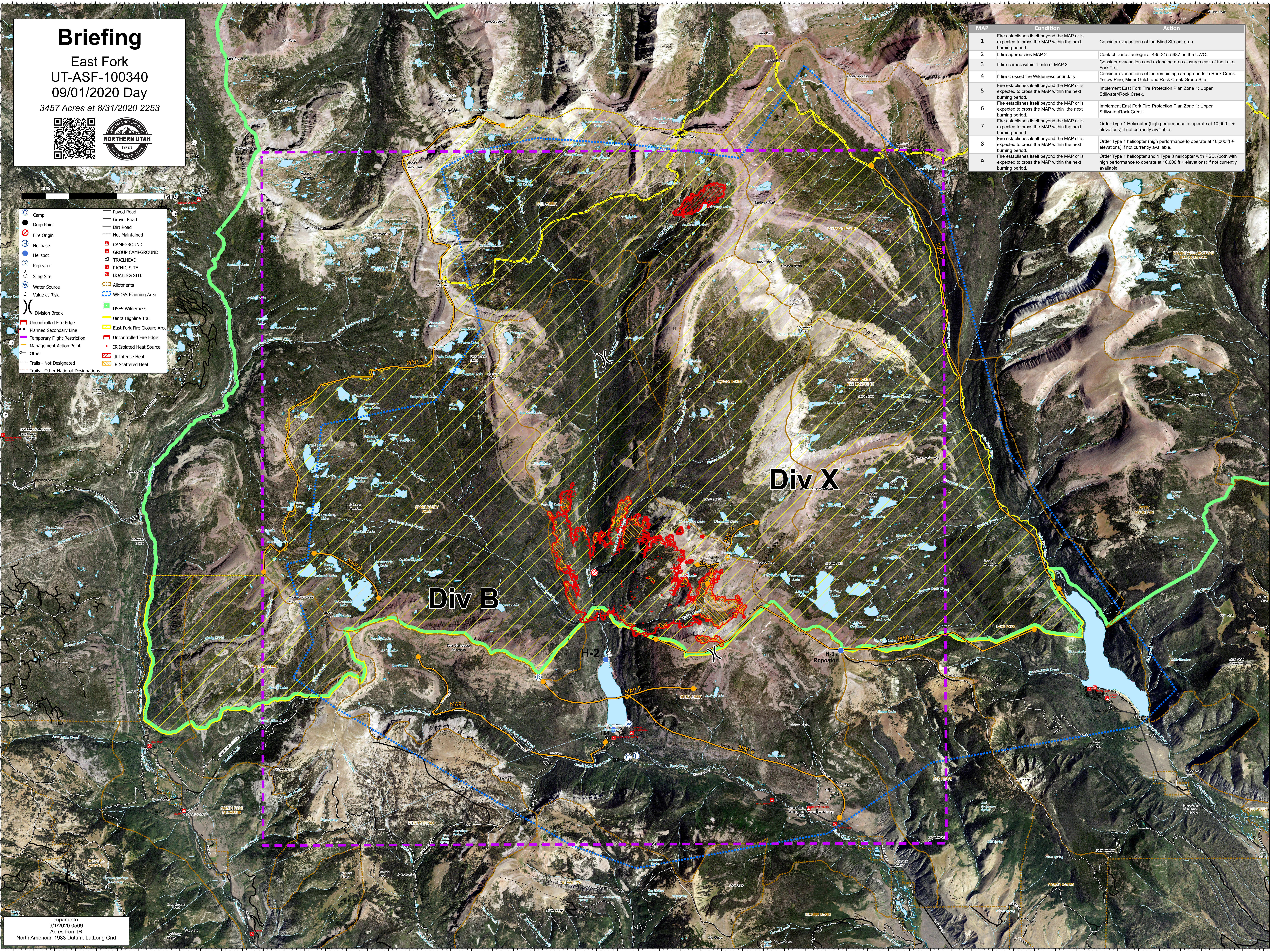
# Briefing

East Fork  
UT-ASF-100340  
09/01/2020 Day  
3457 Acres at 8/31/2020 2253



- Camp
- Drop Point
- ⊗ Fire Origin
- ⊕ Helibase
- ⊕ Helispot
- ⊕ Repeater
- ⊕ Sling Site
- ⊕ Water Source
- ⊕ Value at Risk
- ⊕ Division Break
- ⊕ Uncontrolled Fire Edge
- ⊕ Planned Secondary Line
- ⊕ Temporary Flight Restriction
- ⊕ Management Action Point
- ⊕ Other
- ⊕ Trails - Not Designated
- ⊕ Trails - Other National Designations
- Paved Road
- Gravel Road
- Dirt Road
- Not Maintained
- ⊕ CAMPGROUND
- ⊕ GROUP CAMPGROUND
- ⊕ TRAILHEAD
- ⊕ PICNIC SITE
- ⊕ BOATING SITE
- ⊕ Allotments
- ⊕ WFDSS Planning Area
- ⊕ USFS Wilderness
- ⊕ Uinta Highline Trail
- ⊕ East Fork Fire Closure Area
- ⊕ Uncontrolled Fire Edge
- ⊕ IR Isolated Heat Source
- ⊕ IR Intense Heat
- ⊕ IR Scattered Heat

MAP	Condition	Action
1	Fire establishes itself beyond the MAP or is expected to cross the MAP within the next burning period.	Consider evacuations of the Blind Stream area.
2	If fire approaches MAP 2.	Contact Dano Jauregui at 435-315-5687 on the UWC.
3	If fire comes within 1 mile of MAP 3.	Consider evacuations and extending area closures east of the Lake Fork Trail.
4	If fire crossed the Wilderness boundary.	Consider evacuations of the remaining campgrounds in Rock Creek: Yellow Pine, Miner Gulch and Rock Creek Group Site.
5	Fire establishes itself beyond the MAP or is expected to cross the MAP within the next burning period.	Implement East Fork Fire Protection Plan Zone 1: Upper Stillwater/Rock Creek.
6	Fire establishes itself beyond the MAP or is expected to cross the MAP within the next burning period.	Implement East Fork Fire Protection Plan Zone 1: Upper Stillwater/Rock Creek.
7	Fire establishes itself beyond the MAP or is expected to cross the MAP within the next burning period.	Order Type 1 Helicopter (high performance to operate at 10,000 ft + elevations) if not currently available.
8	Fire establishes itself beyond the MAP or is expected to cross the MAP within the next burning period.	Order Type 1 Helicopter (high performance to operate at 10,000 ft + elevations) if not currently available.
9	Fire establishes itself beyond the MAP or is expected to cross the MAP within the next burning period.	Order Type 1 Helicopter and 1 Type 3 Helicopter with PSD, (both with high performance to operate at 10,000 ft + elevations) if not currently available.



mpanunio  
9/1/2020 0609  
Acres from IR  
North American 1983 Datum, Lat/Long Grid