

Briefing

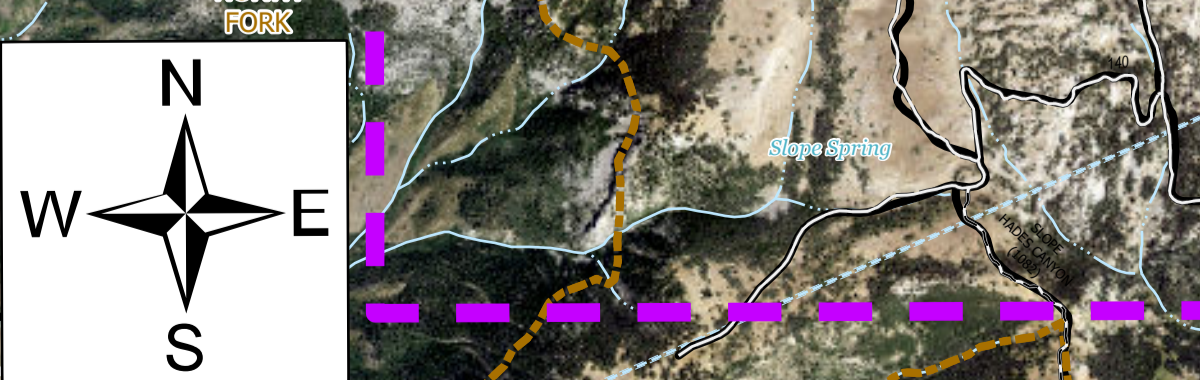
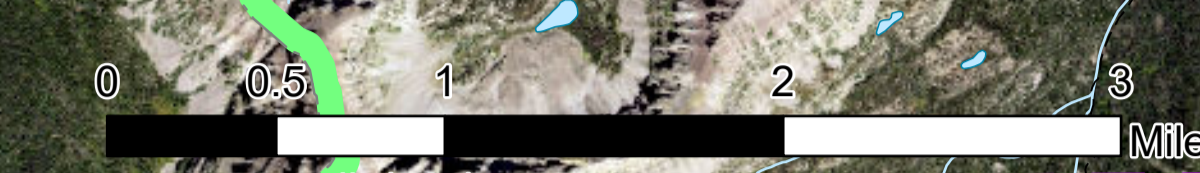
East Fork
UT-ASF-100340
09/06/2020 Day

5061 Acres as of 09/06/2020 0226



MAP	Condition	Action
1	Fire establishes itself beyond the MAP or is expected to cross the MAP within the next burning period.	Consider evacuations of the Blind Stream area.
2	If fire approaches MAP 2.	Contact Dano Jauregui at 435-315-5687 on the UWC.
3	If fire comes within 1 mile of MAP 3.	Consider evacuations and extending area closures east of the Lake Fork Trail.
4	If fire crossed the Wilderness boundary.	Consider evacuations of the remaining campgrounds in Rock Creek: Yellow Pine, Miner Gulch and Rock Creek Group Site
5	Fire establishes itself beyond the MAP or is expected to cross the MAP within the next burning period.	Implement East Fork Fire Protection Plan Zone 1: Upper Stillwater/Rock Creek.
6	Fire establishes itself beyond the MAP or is expected to cross the MAP within the next burning period.	Implement East Fork Fire Protection Plan Zone 1: Upper Stillwater/Rock Creek
7	Fire establishes itself beyond the MAP or is expected to cross the MAP within the next burning period.	Order Type 1 Helicopter (high performance to operate at 10,000 ft + elevations) if not currently available.
8	Fire establishes itself beyond the MAP or is expected to cross the MAP within the next burning period.	Order Type 1 helicopter (high performance to operate at 10,000 ft + elevations) if not currently available.
9	Fire establishes itself beyond the MAP or is expected to cross the MAP within the next burning period.	Order Type 1 helicopter and 1 Type 3 helicopter with PSD, (both with high performance to operate at 10,000 ft + elevations) if not currently available.

- Camp
- Drop Point
- Fire Origin
- Helibase
- Helispot
- Repeater
- Sling Site
- Water Source
- Value at Risk
- Other
- Division Break
- Uncontrolled Fire Edge
- Completed Hand Line
- Planned Secondary Line
- Temporary Flight Restriction
- Management Action Point
- Other
- IR Isolated Heat Source
- IR Intense Heat
- IR Scattered Heat
- Trails - Not Designated
- Paved Road
- Gravel Road
- Dirt Road
- Not Maintained
- CAMPGROUND
- GROUP CAMPGROUND
- TRAILHEAD
- BOATING SITE
- Allotments
- WFSS Planning Area
- USFS Wilderness
- Uinta Highline Trail
- East Fork Fire Closure Area



mpanunto
9/6/2020 0631
Acres from IR
North American 1983 Datum, LatLong Grid

