

110°55.5'W 110°53'W 110°50.5'W 110°48'W 110°45.5'W 110°43'W 110°40.5'W 110°38'W 110°35.5'W 110°33'W 110°30.5'W 110°28'W 110°25.5'W 110°23'W 110°20.5'W 110°18'W 110°15.5'W 110°13'W


IAP MAP

East Fork

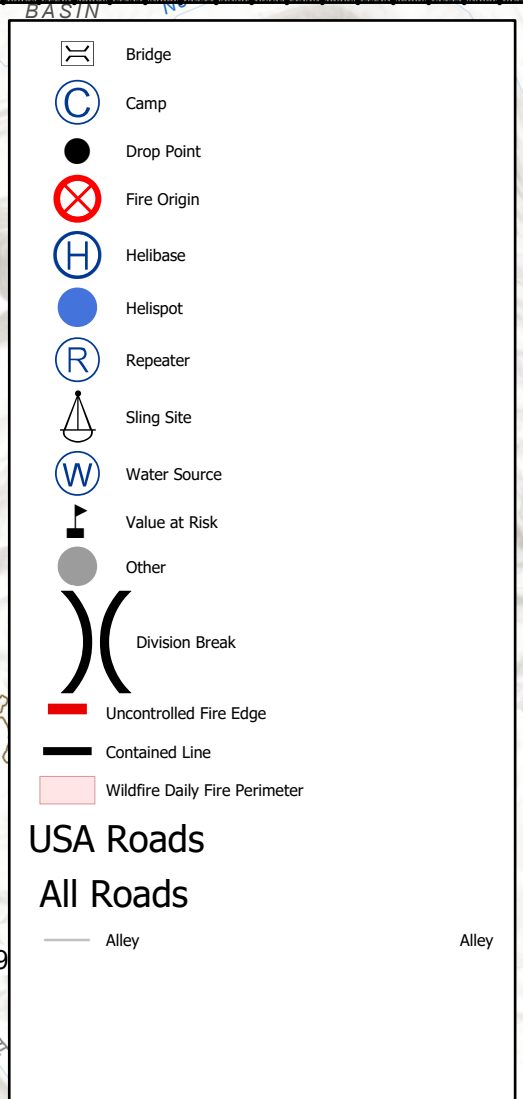
UT-ASF-100340

09/10/2020

44,238 Acres



Team 7

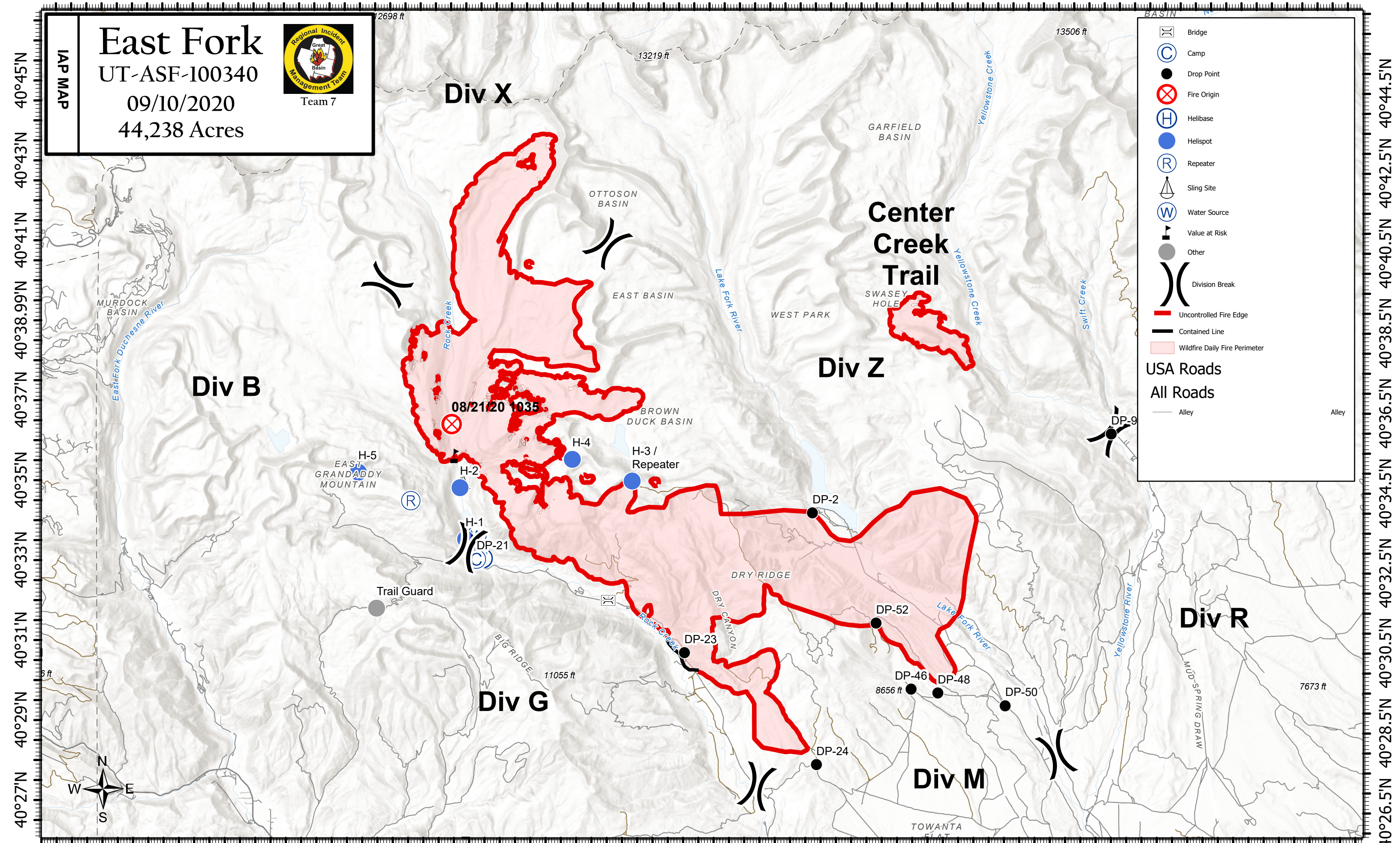


- Bridge
- Camp
- Drop Point
- Fire Origin
- Helibase
- Helispot
- Repeater
- Sling Site
- Water Source
- Value at Risk
- Other
- Division Break
- Uncontrolled Fire Edge
- Contained Line
- Wildfire Daily Fire Perimeter

USA Roads

All Roads

- Alley



110°56'W 110°53.5'W 110°50.5'W 110°48'W 110°45.5'W 110°43'W 110°40.5'W 110°38'W 110°35.5'W 110°33'W 110°30.5'W 110°28'W 110°25.5'W 110°23'W 110°20.5'W 110°18'W 110°15.5'W 110°13'W