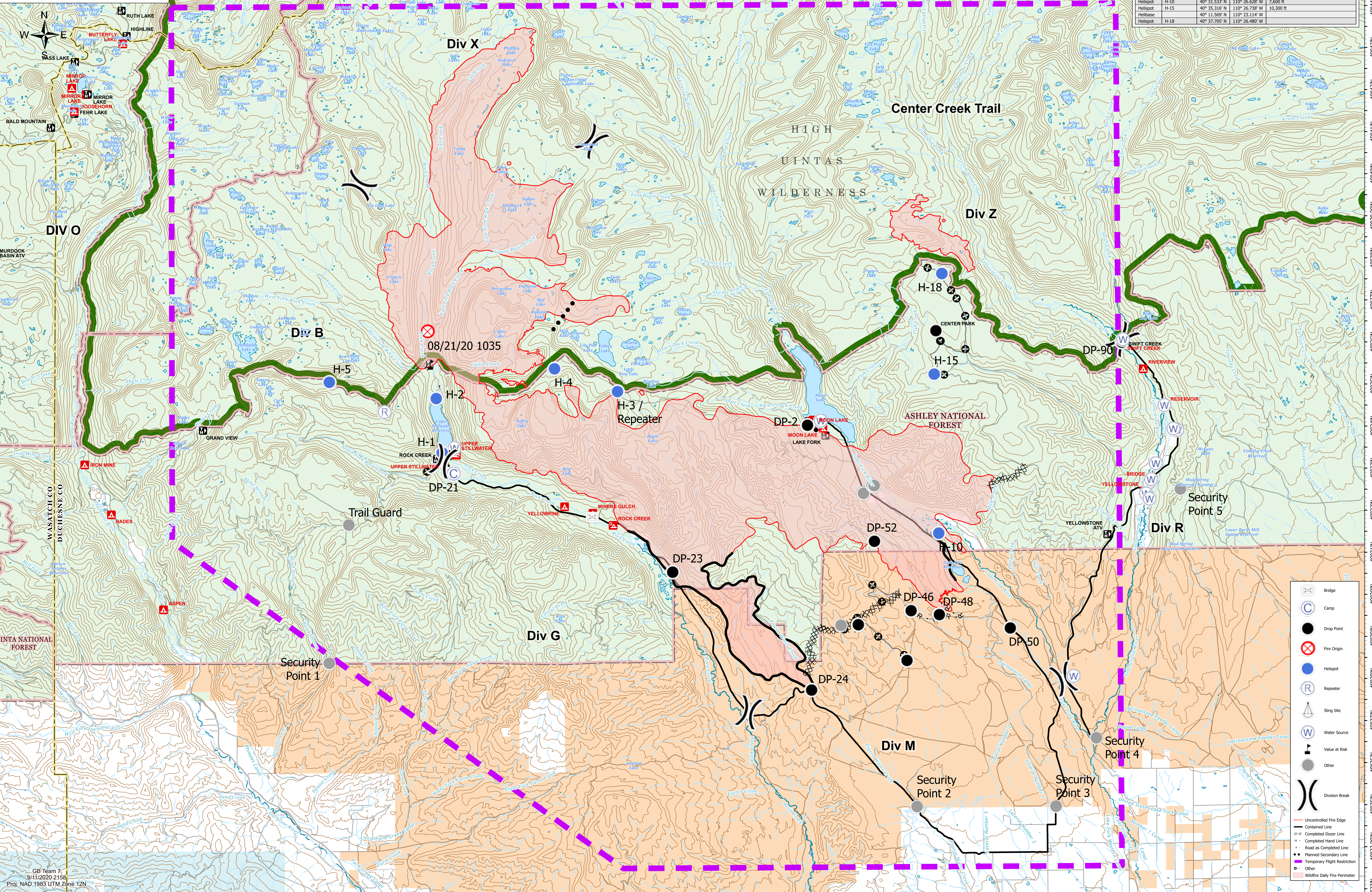


Feature	Label	Lat	Long	Comments
Drop Point	DP-21	40° 33.005' N	110° 41.723' W	Play need to move
Camp		40° 33.001' N	110° 41.734' W	
Sling Site		40° 34.914' N	110° 42.178' W	Possible Div B sling site
Helispot	H-1	40° 33.502' N	110° 42.084' W	
Helispot	H-2	40° 34.790' N	110° 42.261' W	
Helispot	H-3 / Repeater	40° 34.940' N	110° 36.613' W	Dry Ridge Repeater
Repeater		40° 34.470' N	110° 43.877' W	Stillwater Repeater
Drop Point	DP-2	40° 34.116' N	110° 30.703' W	FS guard station
Helispot	H-4	40° 35.488' N	110° 38.574' W	
Helispot	H-5	40° 35.185' N	110° 45.596' W	
Drop Point	DP-23	40° 30.641' N	110° 34.924' W	
Drop Point	DP-50	40° 29.268' N	110° 24.426' W	Junction of Bear Wallow and Moon Lake Rd
Drop Point	DP-48	40° 29.598' N	110° 26.638' W	
Drop Point	DP-50	40° 36.941' N	110° 28.889' W	
Drop Point	DP-24	40° 27.822' N	110° 30.621' W	
Drop Point	DP-46	40° 29.696' N	110° 27.507' W	
Drop Point	DP-52	40° 31.349' N	110° 28.638' W	
Helispot	H-10	40° 31.533' N	110° 26.628' W	7,600 ft
Helispot	H-15	40° 35.216' N	110° 26.738' W	10,300 ft
Helispot	H-18	40° 11.569' N	110° 23.114' W	
Helispot	H-18	40° 37.705' N	110° 26.480' W	



- Bridge
- Camp
- Drop Point
- Fire Origin
- Helispot
- Repeater
- Sling Site
- Water Source
- Value at Risk
- Other
- Division Break
- Uncontrolled Fire Edge
- Contained Line
- Completed Dozer Line
- Completed Hand Line
- Road as Completed Line
- Planned Secondary Line
- Temporary Flight Restriction
- Other
- Wildfire Daily Fire Perimeter