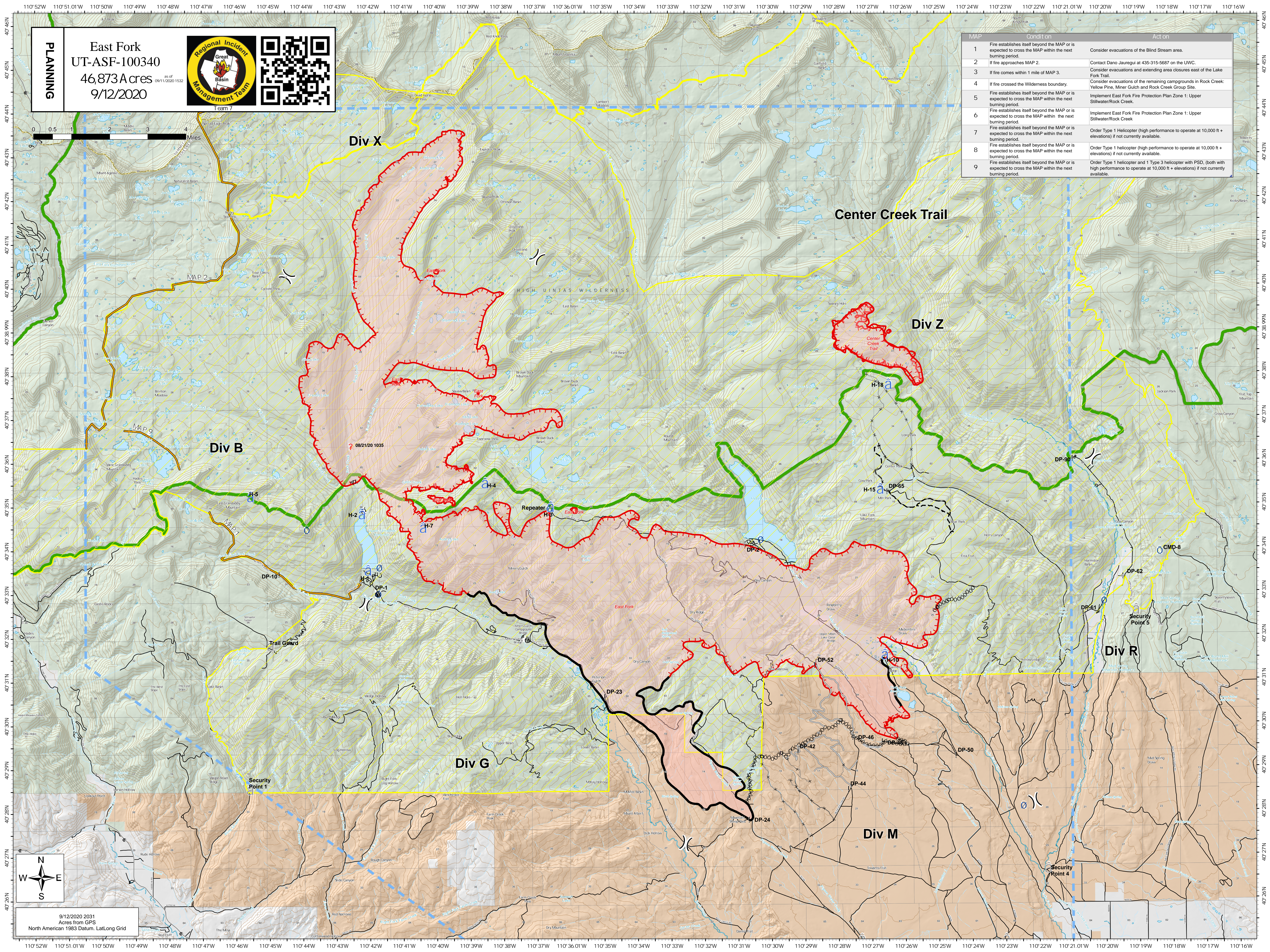


PLANNING

East Fork
UT-ASF-100340
46,873 Acres as of 09/11/2020 1532
9/12/2020




| MAP | Condition | Action |
|-----|--|---|
| 1 | Fire establishes itself beyond the MAP or is expected to cross the MAP within the next burning period. | Consider evacuations of the Blind Stream area. |
| 2 | If fire approaches MAP 2. | Contact Dano Jauregui at 435-315-5687 on the UWC. |
| 3 | If fire comes within 1 mile of MAP 3. | Consider evacuations and extending area closures east of the Lake Fork Trail. |
| 4 | If fire crossed the Wilderness boundary. | Consider evacuations of the remaining campgrounds in Rock Creek: Yellow Pine, Miner Gulch and Rock Creek Group Site. |
| 5 | Fire establishes itself beyond the MAP or is expected to cross the MAP within the next burning period. | Implement East Fork Fire Protection Plan Zone 1: Upper Stillwater/Rock Creek. |
| 6 | Fire establishes itself beyond the MAP or is expected to cross the MAP within the next burning period. | Implement East Fork Fire Protection Plan Zone 1: Upper Stillwater/Rock Creek. |
| 7 | Fire establishes itself beyond the MAP or is expected to cross the MAP within the next burning period. | Order Type 1 helicopter (high performance to operate at 10,000 ft + elevations) if not currently available. |
| 8 | Fire establishes itself beyond the MAP or is expected to cross the MAP within the next burning period. | Order Type 1 helicopter (high performance to operate at 10,000 ft + elevations) if not currently available. |
| 9 | Fire establishes itself beyond the MAP or is expected to cross the MAP within the next burning period. | Order Type 1 helicopter and 1 Type 3 helicopter with PSD, (both with high performance to operate at 10,000 ft + elevations) if not currently available. |



9/12/2020 2031
Acres from GPS
North American 1983 Datum, Lat/Long Grid