


OPERATIONS

East Fork
UT-ASF-100340
09/13/2020
46,873 acres as of 09/11/2020 1532



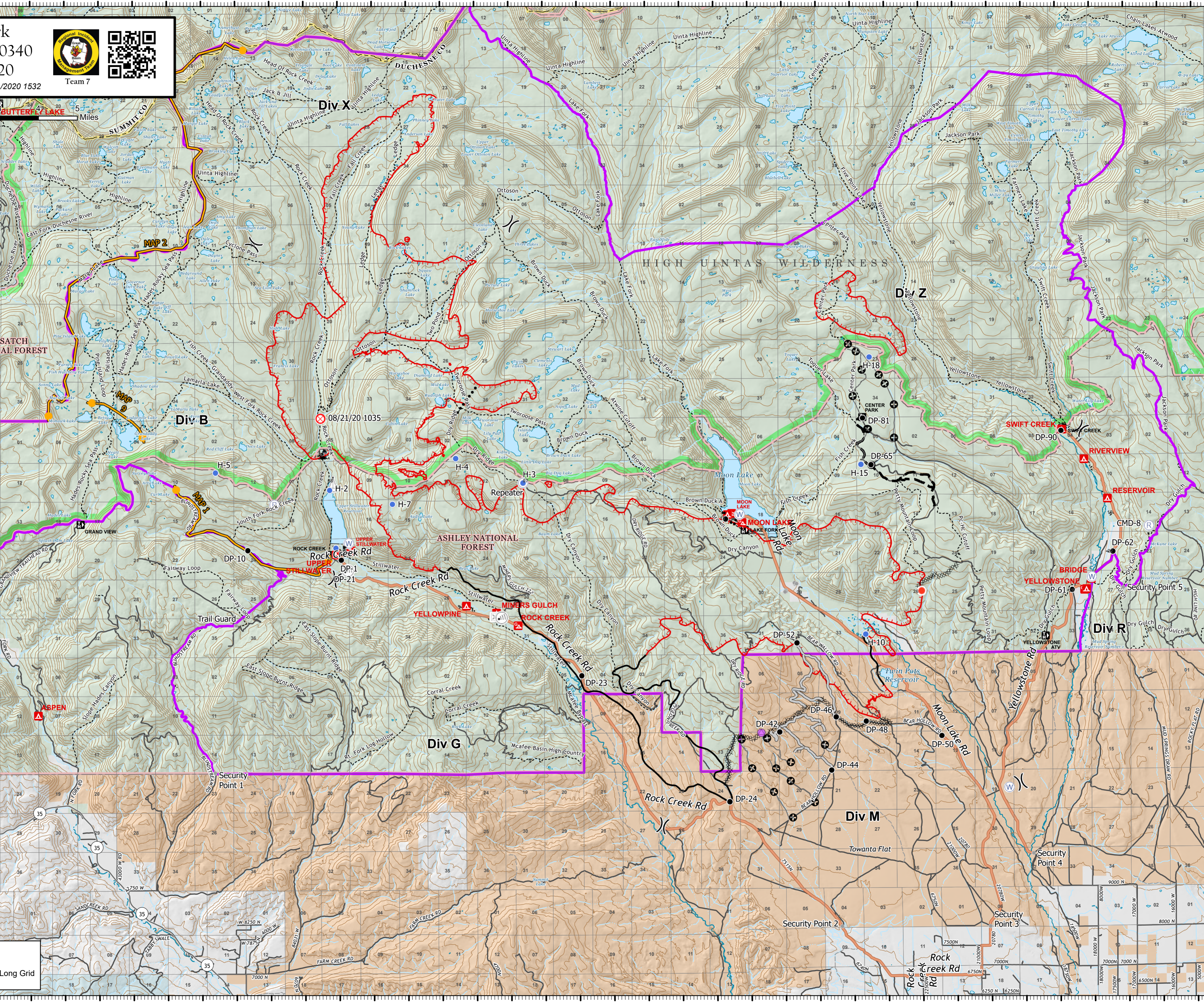
Team 7



- Bridge
- Camp
- Dip Site
- Drop Point
- Fire Origin
- Hazard Tree
- Helispot
- Hot Spot
- Internet Access
- Repair Point
- Repeater
- Retardant in Avoidance Area
- Sling Site
- Water Source
- Value at Risk
- Other
- Division Break
- Uncontrolled Fire Edge
- Contained Line
- Completed Dozer Line
- Completed Hand Line
- Access or Improved Road
- Planned Fire Line
- Planned Secondary Line
- Management Action Point
- Other
- East Fork Fire Closure Area
- USFS Wilderness
- Tribal Lands
- State
- US Forest Service (USFS)
- Private



9/12/2020 2050
Acres from GPS
North American 1983 Datum, LatLong Grid



40°55'N
40°53'N
40°51.01'N
40°49'N
40°47'N
40°45'N
40°43'N
40°41'N
40°39'N
40°37'N
40°35'N
40°33'N
40°31'N
40°29'N
40°27'N
40°25'N
40°23'N
40°21'N
40°19'N
40°17'N

110°55'W
110°53'W
110°51.01'W
110°49'W
110°47'W
110°45'W
110°43'W
110°41'W
110°39'W
110°37'W
110°35'W
110°33'W
110°31'W
110°29'W
110°27'W
110°25'W
110°23'W
110°21'W
110°19'W
110°17'W