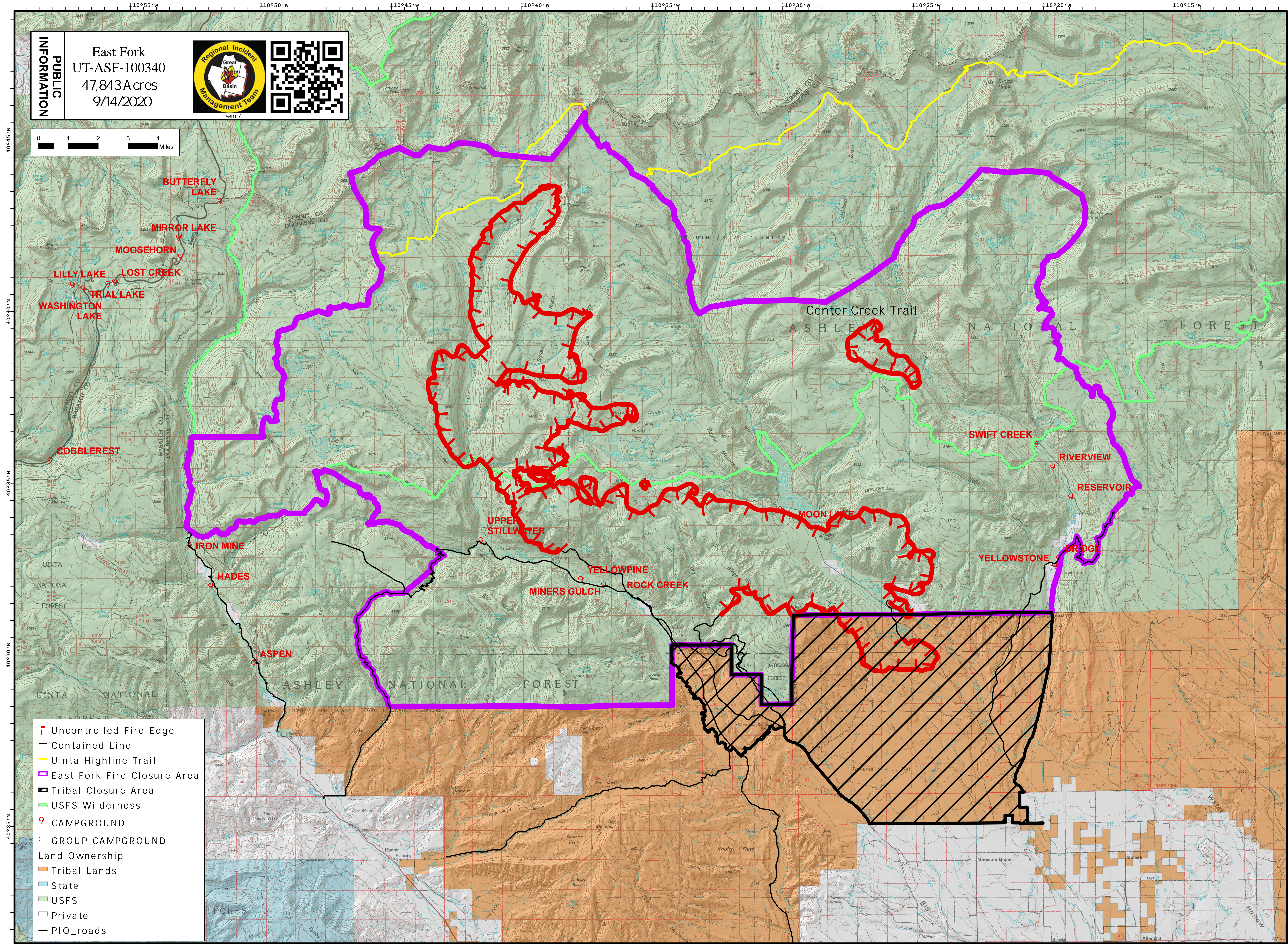
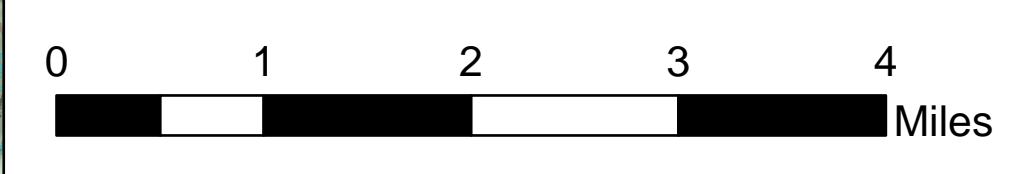


110°55'W 110°50'W 110°45'W 110°40'W 110°35'W 110°30'W 110°25'W 110°20'W 110°15'W

PUBLIC INFORMATION

East Fork
UT-ASF-100340
47,843 Acres
9/14/2020



40°45'N
40°40'N
40°35'N
40°30'N
40°25'N

40°45'N
40°40'N
40°35'N
40°30'N
40°25'N

- Uncontrolled Fire Edge
- Contained Line
- Uinta Highline Trail
- East Fork Fire Closure Area
- Tribal Closure Area
- USFS Wilderness
- CAMPGROUND
- GROUP CAMPGROUND
- Land Ownership
- Tribal Lands
- State
- USFS
- Private
- PIO_roads