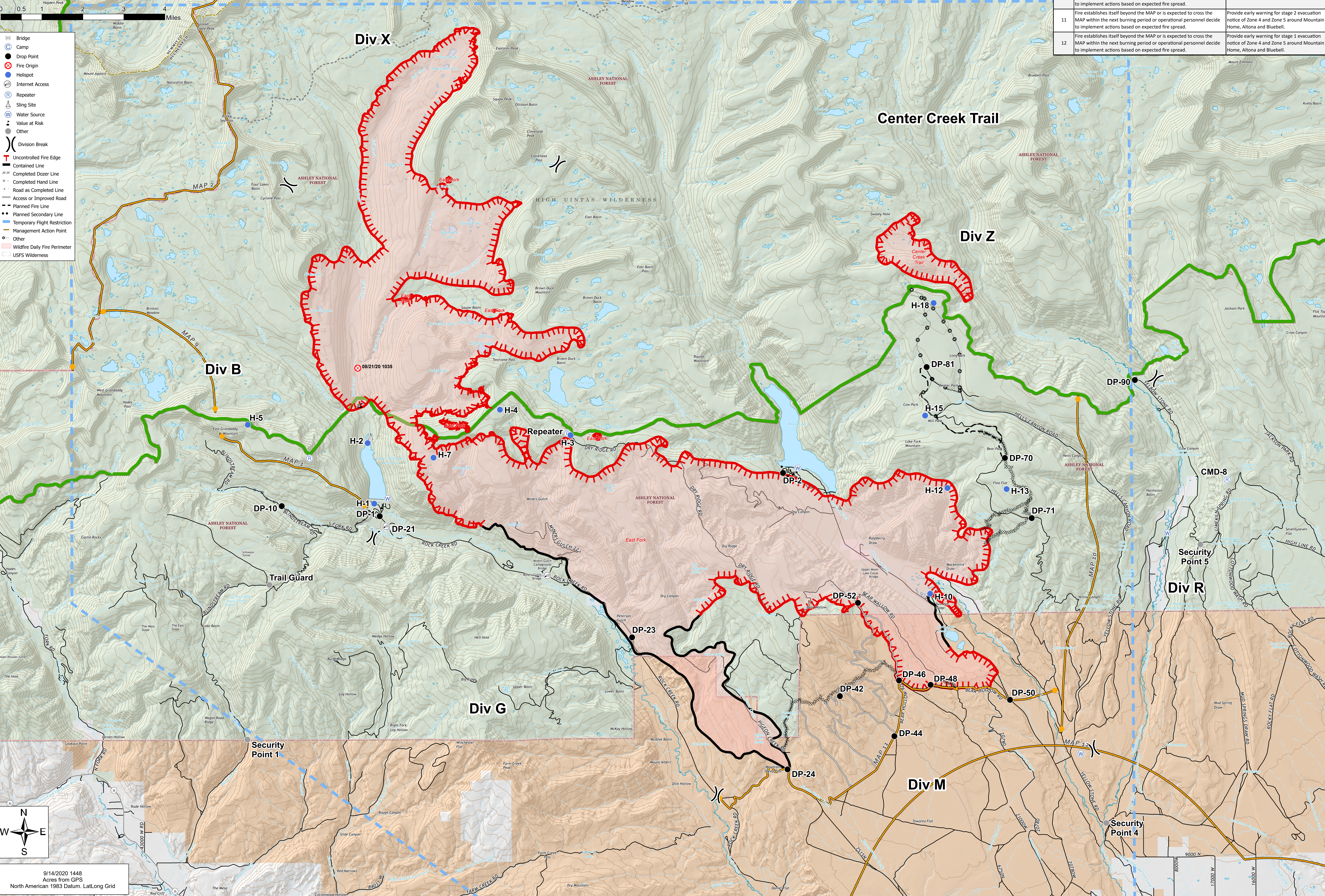


PLANNING

East Fork
UT-ASF-100340
47,843 Acres as of 09/13/2020 1735
9/14/2020




| MAP | Condition | Action |
|-----|---|---|
| 1 | Fire establishes itself beyond the MAP or is expected to cross the MAP within the next burning period. | Evacuations to ensure safety of the public. |
| 2 | If Fire Approaches MAP 2 | Notification of the UWC NF of fire status and threat to UWC. |
| 9 | Fire establishes itself beyond the MAP or is expected to cross the MAP within the next burning period or operational personnel decide to implement actions based on expected fire spread. | Check further fire spread out of Gandaddy Lake basin and out of the wilderness to the Southeast thru Hades Pass. |
| 10 | Fire establishes itself beyond the MAP or is expected to cross the MAP within the next burning period or operational personnel decide to implement actions based on expected fire spread. | Stage 1 evacuation of Yellowstone Canyon |
| 11 | Fire establishes itself beyond the MAP or is expected to cross the MAP within the next burning period or operational personnel decide to implement actions based on expected fire spread. | Provide early warning for stage 2 evacuation notice of Zone 4 and Zone 5 around Mountain Home, Altona and Bluebell. |
| 12 | Fire establishes itself beyond the MAP or is expected to cross the MAP within the next burning period or operational personnel decide to implement actions based on expected fire spread. | Provide early warning for stage 1 evacuation notice of Zone 4 and Zone 5 around Mountain Home, Altona and Bluebell. |



9/14/2020 1448
Acres from GPS
North American 1983 Datum, Lat/Long Grid