

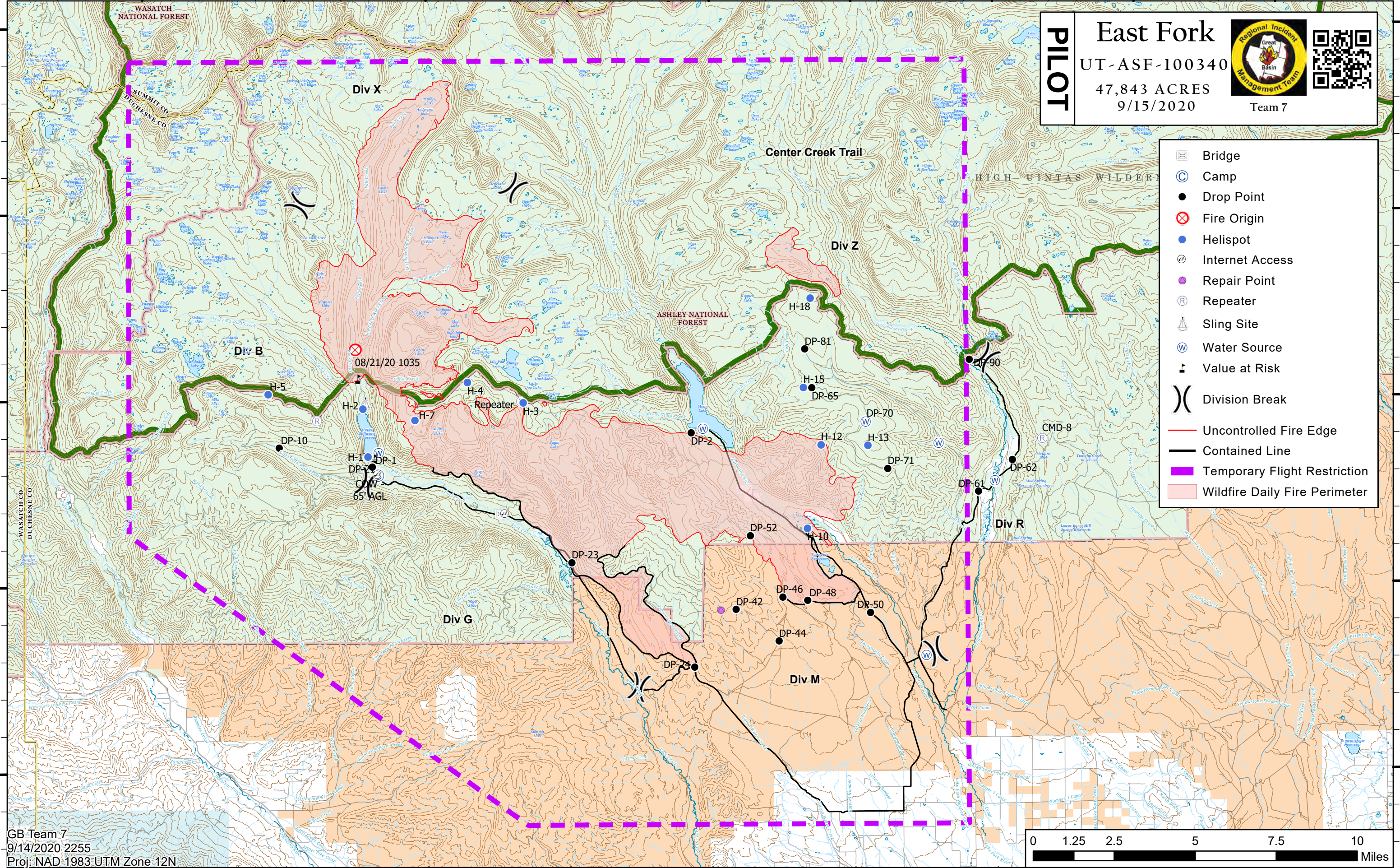
110°50'W 110°45'W 110°40'W 110°35'W 110°30'W 110°25'W 110°20'W 110°15'W 110°10'W

PILOT

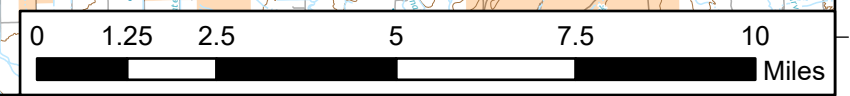
East Fork
UT-ASF-100340
47,843 ACRES
9/15/2020



- Bridge
- Camp
- Drop Point
- Fire Origin
- Helispot
- Internet Access
- Repair Point
- Repeater
- Sling Site
- Water Source
- Value at Risk
- Division Break
- Uncontrolled Fire Edge
- Contained Line
- Temporary Flight Restriction
- Wildfire Daily Fire Perimeter



GB Team 7
9/14/2020 2255
Proj: NAD 1983 UTM Zone 12N



110°50'W 110°45'W 110°40'W 110°35'W 110°30'W 110°25'W 110°20'W 110°15'W 110°10'W

40°45'N
40°40'N
40°35'N
40°30'N
40°25'N

40°45'N
40°40'N
40°35'N
40°30'N
40°25'N