

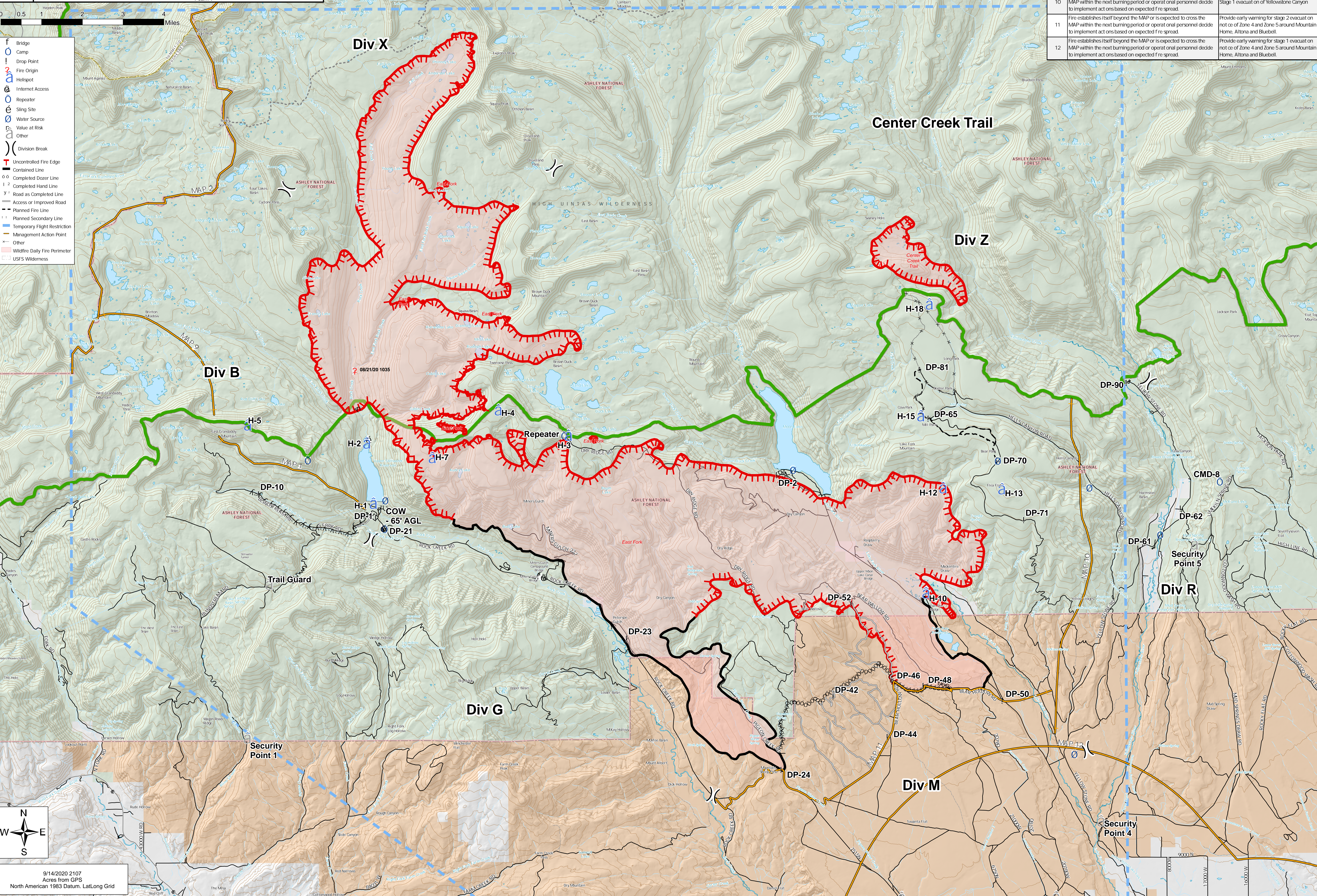
**PLANNING**

East Fork  
UT-ASF-100340  
47,843 Acres as of 09/13/2020 17:35  
9/15/2020




MAP	Condition	Action
1	Fire establishes itself beyond the MAP or is expected to cross the MAP within the next burning period.	Evacuate on to ensure safety of the public.
2	If Fire Approaches MAP 2	Notification on the UWCNF of fire status and threat to UWC.
9	Fire establishes itself beyond the MAP or is expected to cross the MAP within the next burning period or operational personnel decide to implement act on based on expected fire spread.	Check further fire spread out of Gandaddy Lake basin and out of the wilderness to the Southeast thru Hades Pass.
10	Fire establishes itself beyond the MAP or is expected to cross the MAP within the next burning period or operational personnel decide to implement act on based on expected fire spread.	Stage 1 evacuation of Yellowstone Canyon
11	Fire establishes itself beyond the MAP or is expected to cross the MAP within the next burning period or operational personnel decide to implement act on based on expected fire spread.	Provide early warning for stage 2 evacuation on not on of Zone 4 and Zone 5 around Mountain Home, Alta and Bluebell.
12	Fire establishes itself beyond the MAP or is expected to cross the MAP within the next burning period or operational personnel decide to implement act on based on expected fire spread.	Provide early warning for stage 1 evacuation on not on of Zone 4 and Zone 5 around Mountain Home, Alta and Bluebell.

- f Bridge
- o Camp
- o Drop Point
- o Fire Origin
- o Helispot
- o Internet Access
- o Repeater
- o Sling Site
- o Water Source
- o Value at Risk
- o Other
- ( ) Division Break
- Uncontrolled Fire Edge
- Contained Line
- o Completed Dozer Line
- o Completed Hand Line
- o Road as Completed Line
- o Access or Improved Road
- o Planned Fire Line
- o Planned Secondary Line
- o Temporary Flight Restriction
- o Management Action Point
- o Other
- o Wildfire Daily Fire Perimeter
- o USFS Wilderness



9/14/2020 2107  
Acres from GPS  
North American 1983 Datum, LatLong Grid