

OPERATIONS

East Fork

UT-ASF-100340

09/16/2020

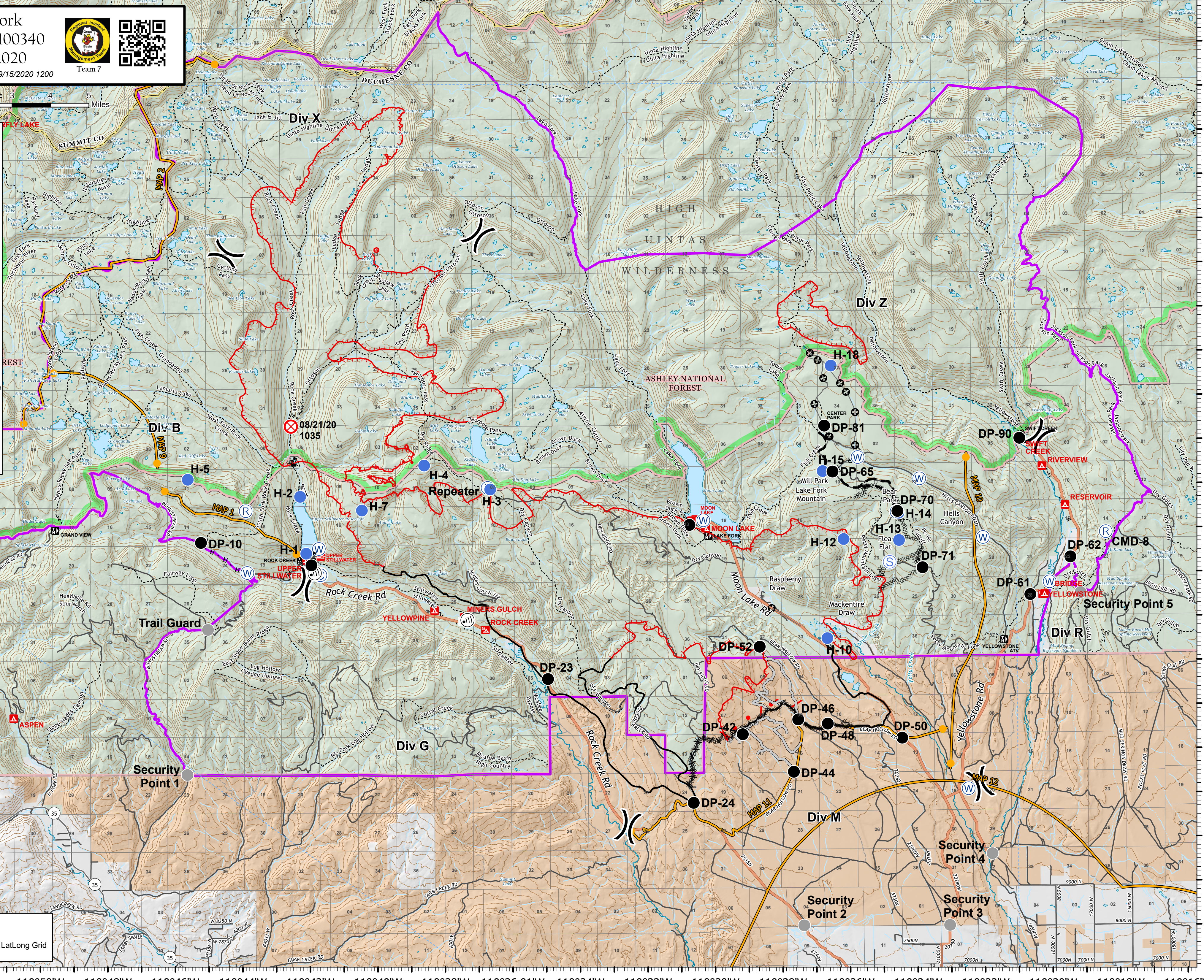
51,784 acres as of 09/15/2020 1200



Team 7



- Bridge
- Drop Point
- Fire Origin
- Helispot
- Internet Access
- Repeater
- Sling Site
- Staging Area
- Water Source
- Value at Risk
- Other
- Division Break
- Uncontrolled Fire Edge
- Contained Line
- Completed Dozer Line
- Completed Hand Line
- Road as Completed Line
- Access or Improved Road
- Proposed Burnout
- Active Burnout
- Planned Fire Line
- Temporary Flight Restriction
- Management Action Point
- Other
- East Fork Fire Closure Area
- USFS Wilderness
- Tribal Lands
- US Forest Service (USFS)
- Private



9/15/2020 2047
Acres from GPS
North American 1983 Datum, LatLong Grid

110°54'W 110°52'W 110°50'W 110°48'W 110°46'W 110°44'W 110°42'W 110°40'W 110°38'W 110°36.01'W 110°34'W 110°32'W 110°30'W 110°28'W 110°26'W 110°24'W 110°22'W 110°20'W 110°18'W 110°16'W

40°25'N 40°26'N 40°27'N 40°28'N 40°29'N 40°30'N 40°31'N 40°32'N 40°33'N 40°34'N 40°35'N 40°36'N 40°37'N 40°38'N 40°39'N 40°40'N 40°41'N 40°42'N 40°43'N 40°44'N 40°45'N 40°46'N