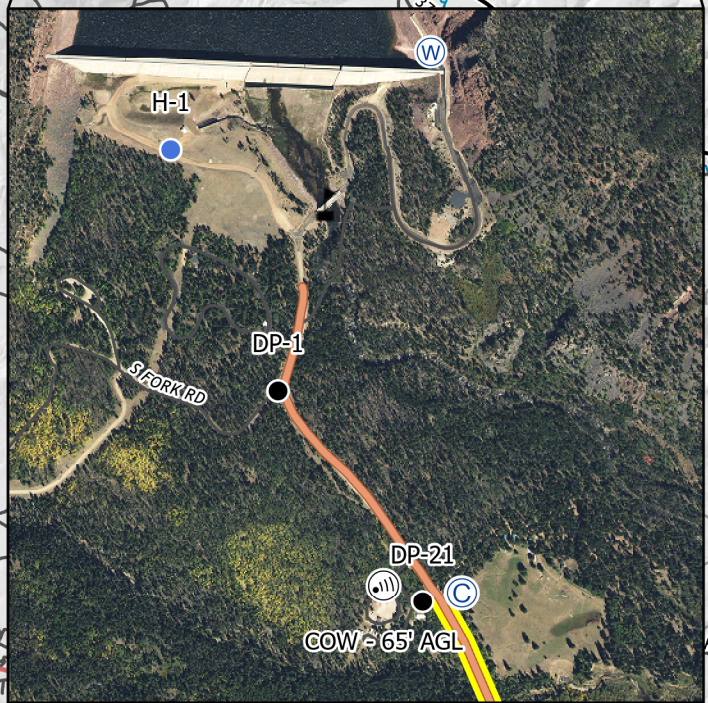


- Bridge
- Camp
- Drop Point
- Helibase
- Helispot
- Incident Command Post
- Repeater
- Sling Site
- Staging Area
- Water Source
- Value at Risk
- Division Break
- Wildfire Daily Fire Perimeter
- Route to Stillwater ICP



**TRANSPORTATION**

**East Fork**  
 UT-ASF-100340  
 09/16/2020  
 51,784 Acres

