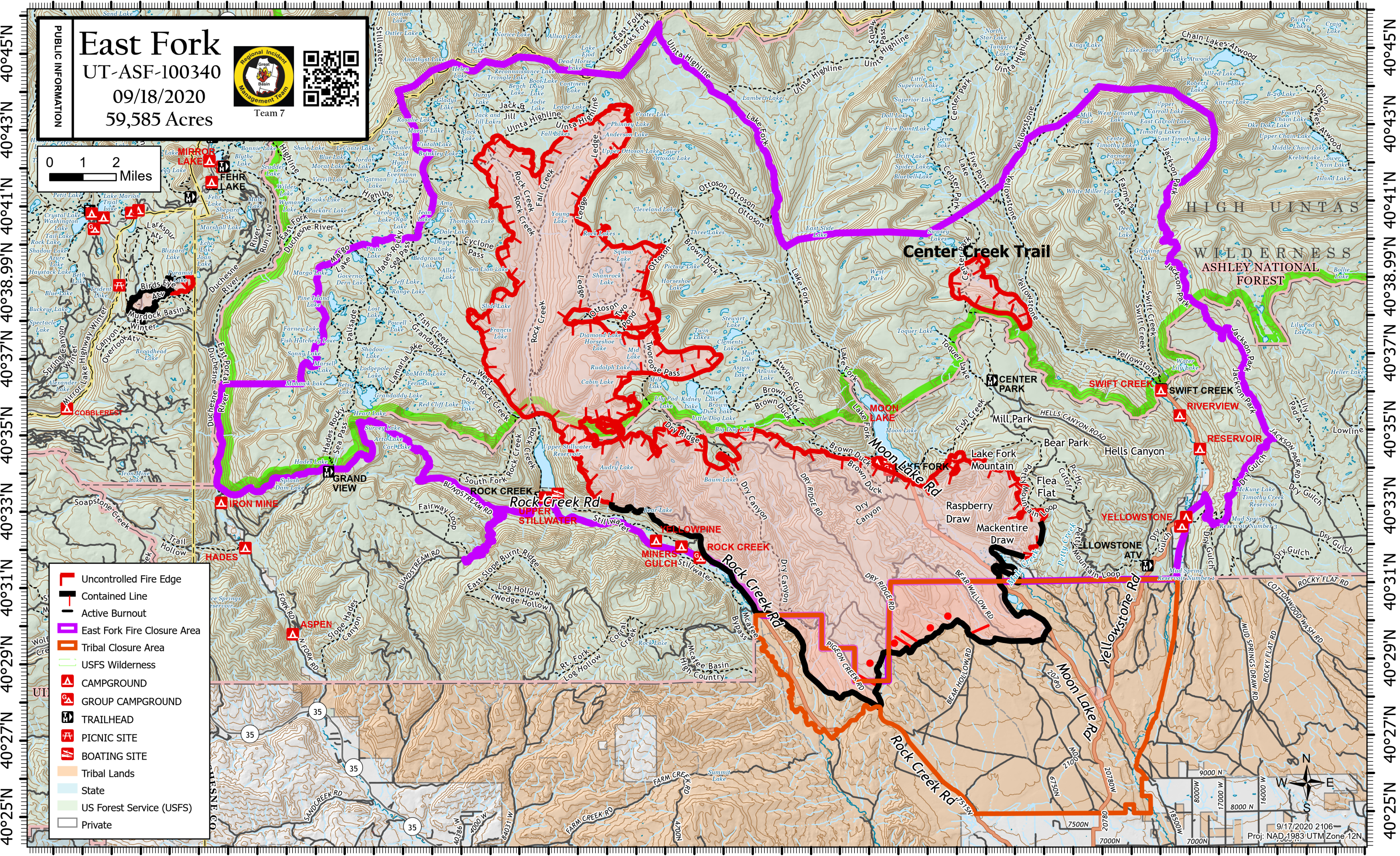
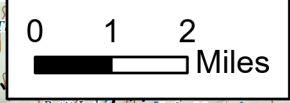


110°59'W 110°56'W 110°53'W 110°50'W 110°47'W 110°44'W 110°41'W 110°38'W 110°35'W 110°32'W 110°29'W 110°26'W 110°23'W 110°20'W 110°17'W 110°14'W



East Fork
 UT-ASF-100340
 09/18/2020
 59,585 Acres

Regional Incident Management Team
 Team 7



- Uncontrolled Fire Edge
- Contained Line
- Active Burnout
- East Fork Fire Closure Area
- Tribal Closure Area
- USFS Wilderness
- CAMPGROUND
- GROUP CAMPGROUND
- TRAILHEAD
- PICNIC SITE
- BOATING SITE
- Tribal Lands
- State
- US Forest Service (USFS)
- Private

9/17/2020 2106
 Proj: NAD_1983 UTM Zone 12N

110°59'W 110°56'W 110°53'W 110°50'W 110°47'W 110°44'W 110°41'W 110°38'W 110°35'W 110°32'W 110°29'W 110°26'W 110°23'W 110°20'W 110°17'W 110°14'W

40°25'N 40°27'N 40°29'N 40°31'N 40°33'N 40°35'N 40°37'N 40°38.99'N 40°41'N 40°43'N 40°45'N

40°25'N 40°27'N 40°29'N 40°31'N 40°33'N 40°35'N 40°37'N 40°38.99'N 40°41'N 40°43'N 40°45'N