


AIR OPS

East Fork


UT-ASF-100340

59,585 Acres as of 9/17/2020 0045

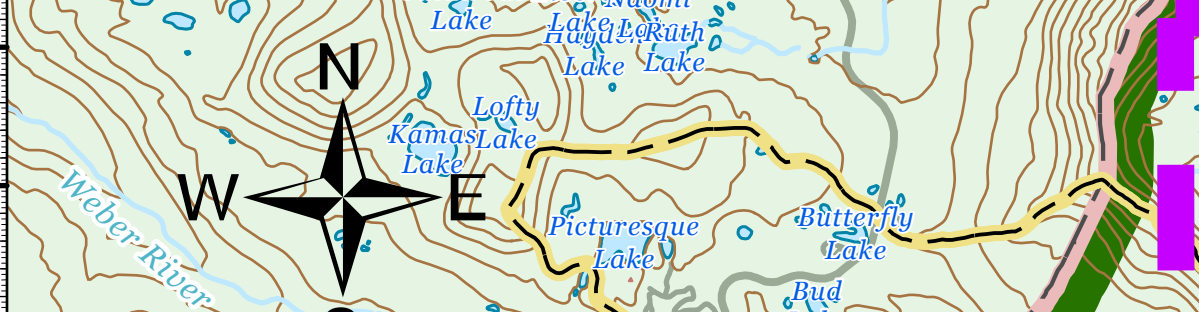
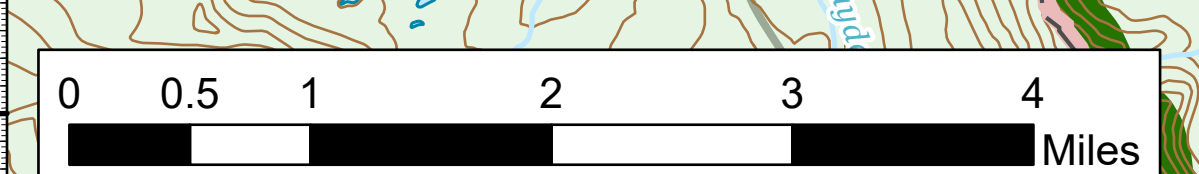
9/18/2020



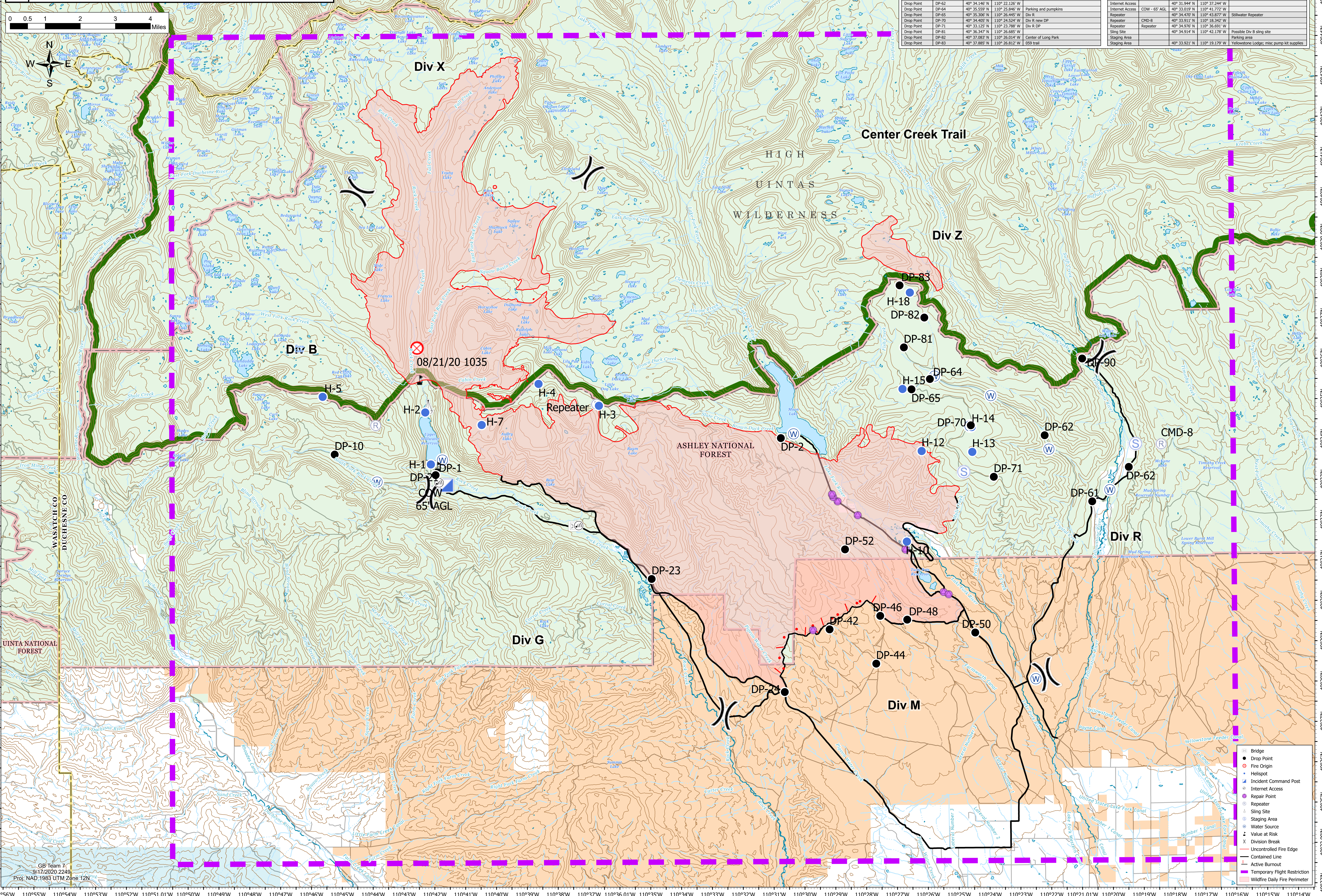
Regional Incident Management Team
Basin
Team 7



<https://argo.page.link/A7vffA7vff>



Feature	Label	Lat	Long	Comments
Drop Point	DP-1	40° 33.227' N	110° 41.920' W	
Drop Point	DP-10	40° 33.794' N	110° 45.209' W	
Drop Point	DP-2	40° 34.116' N	110° 30.703' W	FS guard station
Drop Point	DP-21	40° 33.005' N	110° 41.723' W	May need to move
Drop Point	DP-23	40° 30.841' N	110° 24.924' W	
Drop Point	DP-24	40° 27.822' N	110° 30.621' W	
Drop Point	DP-42	40° 29.369' N	110° 29.155' W	
Drop Point	DP-44	40° 28.512' N	110° 27.645' W	
Drop Point	DP-46	40° 29.996' N	110° 27.597' W	
Drop Point	DP-48	40° 29.998' N	110° 26.632' W	
Drop Point	DP-50	40° 29.268' N	110° 24.426' W	Junction of Bear Wallow and Moon Lake Rd
Drop Point	DP-52	40° 31.349' N	110° 28.638' W	
Drop Point	DP-61	40° 32.580' N	110° 20.996' W	
Drop Point	DP-62	40° 33.347' N	110° 19.999' W	
Drop Point	DP-66	40° 34.146' N	110° 22.126' W	
Drop Point	DP-64	40° 35.559' N	110° 25.845' W	Parking and pumps
Drop Point	DP-65	40° 35.366' N	110° 26.445' W	Div R
Drop Point	DP-70	40° 34.405' N	110° 24.524' W	Div R new DP
Drop Point	DP-71	40° 33.125' N	110° 23.788' W	Div R DP
Drop Point	DP-81	40° 36.347' N	110° 26.685' W	
Drop Point	DP-83	40° 37.885' N	110° 26.812' W	Center of Long Park
Drop Point	DP-88	40° 37.885' N	110° 26.812' W	059 trail
Drop Point	DP-90	40° 36.041' N	110° 20.889' W	
Helibase	H-1	40° 31.569' N	110° 23.114' W	
Helispot	H-10	40° 31.533' N	110° 26.628' W	7,600 ft
Helispot	H-11	40° 33.778' N	110° 26.386' W	10,300 ft
Helispot	H-12	40° 33.745' N	110° 24.483' W	
Helispot	H-13	40° 34.362' N	110° 24.483' W	Type 2 & 3
Helispot	H-14	40° 34.362' N	110° 24.960' W	
Helispot	H-15	40° 35.316' N	110° 26.738' W	
Helispot	H-18	40° 32.778' N	110° 26.580' W	
Helispot	H-2	40° 34.790' N	110° 42.261' W	
Helispot	H-3	40° 34.940' N	110° 36.691' W	
Helispot	H-4	40° 35.488' N	110° 38.574' W	
Helispot	H-5	40° 32.778' N	110° 45.596' W	
Helispot	H-7	40° 34.475' N	110° 40.428' W	
Helispot	H-8	40° 31.944' N	110° 37.244' W	
Internet Access	COW - 65' AGL	40° 33.019' N	110° 41.772' W	
Repeater	CMD-8	40° 34.478' N	110° 43.877' W	Stilwater Repeater
Repeater	CMD-8	40° 33.911' N	110° 18.342' W	
Repeater	Repeater	40° 33.911' N	110° 18.342' W	
Sling Site	Sling Site	40° 34.914' N	110° 42.178' W	Possible Div B sling site
Staging Area	Staging Area	40° 33.921' N	110° 19.179' W	Parking area
Staging Area	Staging Area	40° 33.921' N	110° 19.179' W	Yellowstone Lodge; misc pump kit supplies



	Bridge
	Fire Origin
	Helispot
	Incident Command Post
	Internet Access
	Repair Point
	Repeater
	Sling Site
	Staging Area
	Water Source
	Value at Risk
	Division Break
	Uncontrolled Fire Edge
	Contained Line
	Active Burnout
	Temporary Flight Restriction
	Wildfire Daily Fire Perimeter