

OPERATIONS

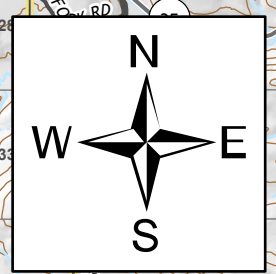
East Fork
 UT-ASF-100340
 09/18/2020
 59,585 acres as of 0045



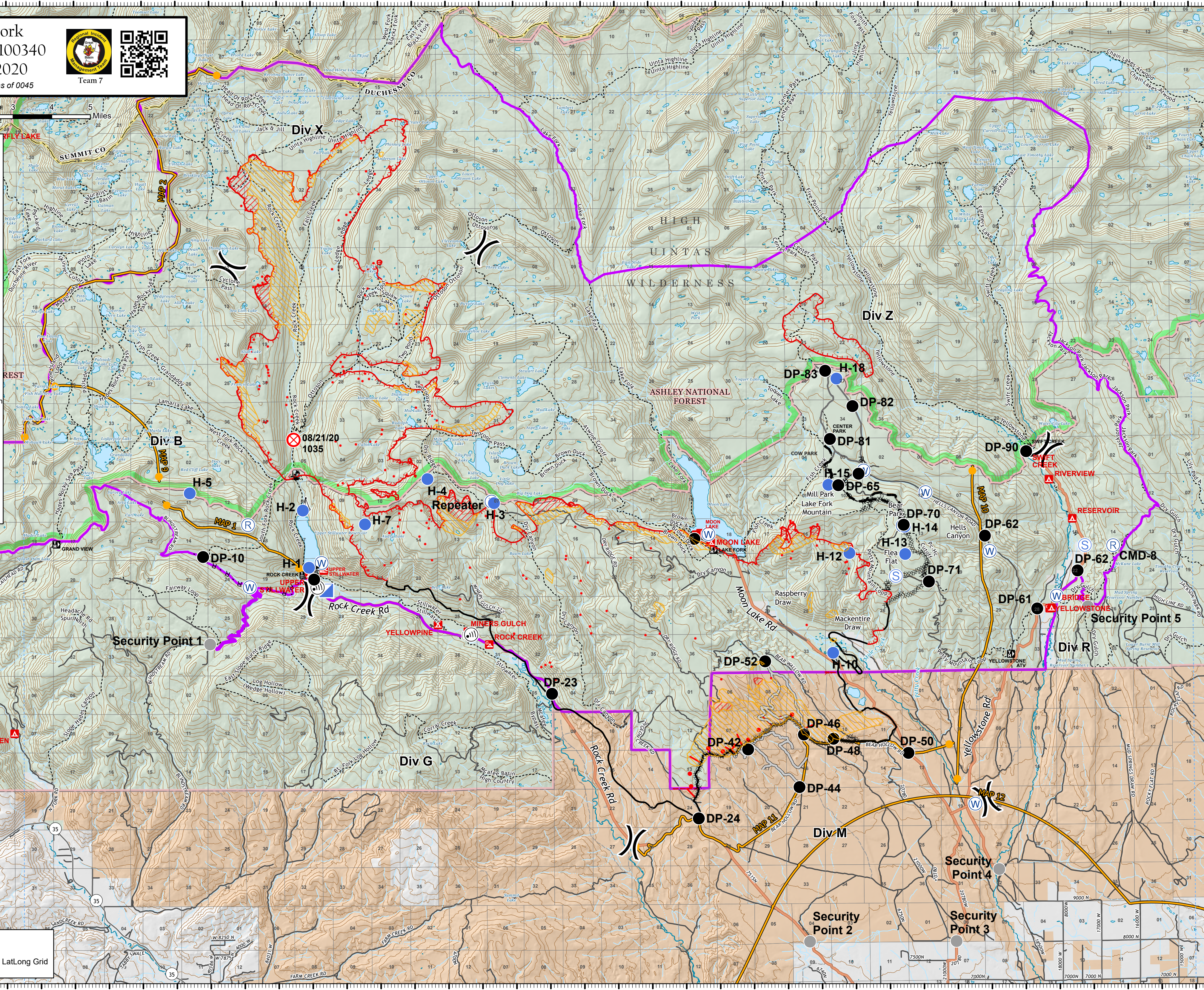
Team 7




- Bridge
- Drop Point
- Fire Origin
- Helispot
- ▲ Incident Command Post
- Internet Access
- Repeater
- ▲ Sling Site
- Staging Area
- Water Source
- Value at Risk
- Other
- ⌘ Division Break
- IR Isolated Heat Source
- Uncontrolled Fire Edge
- Contained Line
- Completed Dozer Line
- Completed Hand Line
- Road as Completed Line
- Access or Improved Road
- Active Burnout
- Planned Fire Line
- Temporary Flight Restriction
- Fence
- Management Action Point
- Other
- ▨ IR Intense Heat
- ▨ IR Scattered Heat
- ▨ East Fork Fire Closure Area
- ▨ USFS Wilderness
- ▨ Tribal Lands
- ▨ US Forest Service (USFS)
- ▨ Private



9/17/2020 2247
 Acres from IR
 North American 1983 Datum, LatLong Grid



40°54'N 40°52'N 40°50'N 40°48'N 40°46'N 40°44'N 40°42'N 40°40'N 40°38'N 40°36'N 40°34'N 40°32'N 40°30'N 40°28'N 40°26'N 40°25'N

110°54'W 110°52'W 110°50'W 110°48'W 110°46'W 110°44'W 110°42'W 110°40'W 110°38'W 110°36.01'W 110°34'W 110°32'W 110°30'W 110°28'W 110°26'W 110°24'W 110°22'W 110°20'W 110°18'W 110°16'W