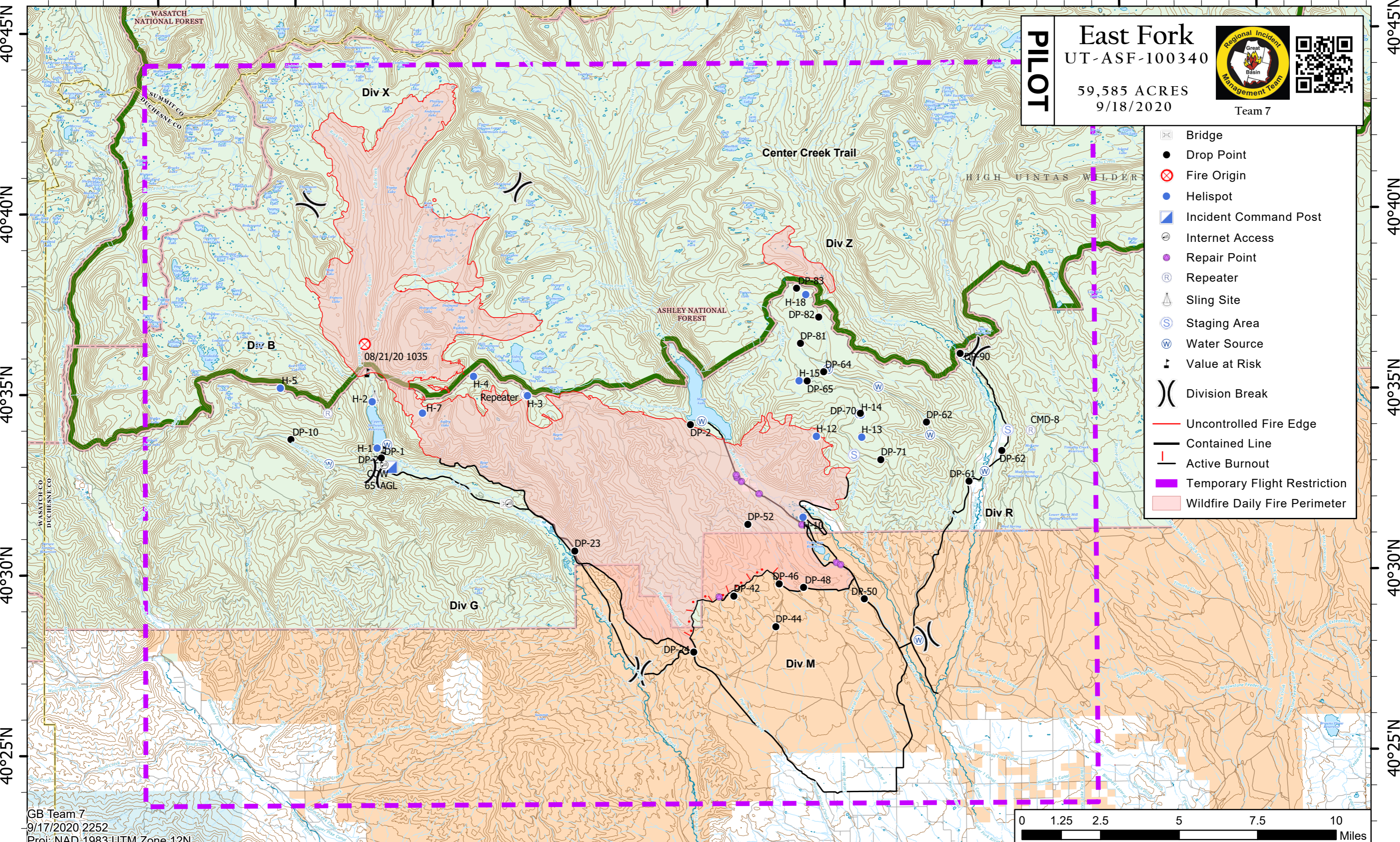


110°50'W 110°45'W 110°40'W 110°35'W 110°30'W 110°25'W 110°20'W 110°15'W 110°10'W



**PILOT**

# East Fork

UT-ASF-100340

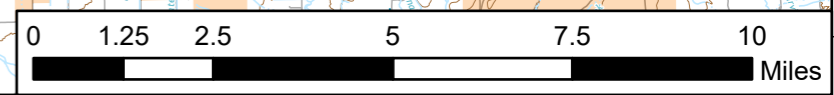
59,585 ACRES  
9/18/2020



Team 7

- Bridge
- Drop Point
- Fire Origin
- Helispot
- Incident Command Post
- Internet Access
- Repair Point
- Repeater
- Sling Site
- Staging Area
- Water Source
- Value at Risk
- Division Break
- Uncontrolled Fire Edge
- Contained Line
- Active Burnout
- Temporary Flight Restriction
- Wildfire Daily Fire Perimeter

GB Team 7  
9/17/2020 2252  
Proj: NAD 1983 UTM Zone 12N



110°50'W 110°45'W 110°40'W 110°35'W 110°30'W 110°25'W 110°20'W 110°15'W 110°10'W

40°45'N  
40°40'N  
40°35'N  
40°30'N  
40°25'N