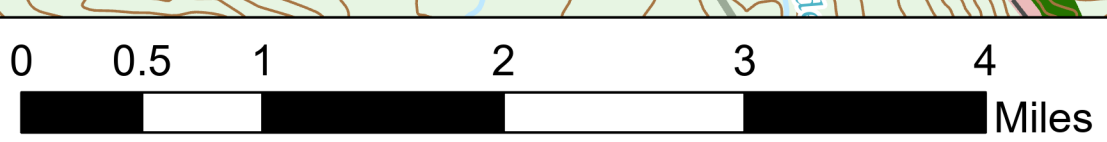
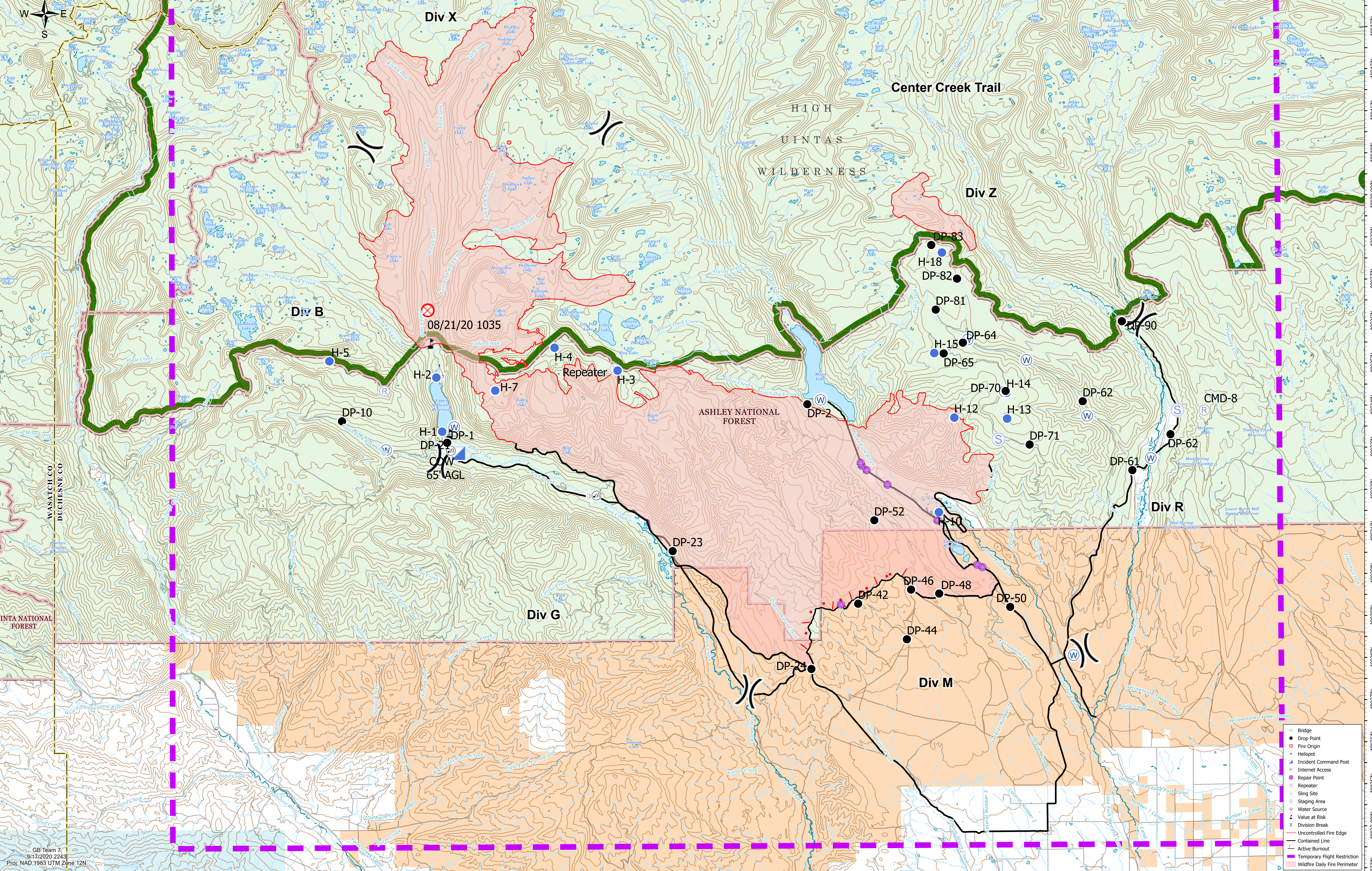


AIR OPS

East Fork
UT-ASF-100340
59,585 Acres as of 9/17/2020 0045
9/18/2020



Feature	Label	Lat	Long	Comments
Drop Point	DP-1	40° 33.237' N	110° 41.920' W	
Drop Point	DP-10	40° 33.794' N	110° 45.209' W	
Drop Point	DP-2	40° 34.116' N	110° 30.703' W	FS guard station
Drop Point	DP-21	40° 33.005' N	110° 41.723' W	May need to move
Drop Point	DP-23	40° 30.841' N	110° 24.924' W	
Drop Point	DP-24	40° 27.822' N	110° 30.621' W	
Drop Point	DP-42	40° 29.369' N	110° 29.155' W	
Drop Point	DP-44	40° 28.512' N	110° 27.645' W	
Drop Point	DP-46	40° 29.696' N	110° 27.597' W	
Drop Point	DP-48	40° 29.598' N	110° 26.632' W	
Drop Point	DP-50	40° 29.268' N	110° 24.426' W	Junction of Bear Wallow and Moon Lake Rd
Drop Point	DP-52	40° 31.349' N	110° 28.638' W	
Drop Point	DP-61	40° 32.580' N	110° 28.998' W	
Drop Point	DP-62	40° 33.347' N	110° 19.399' W	
Drop Point	DP-62	40° 34.140' N	110° 22.126' W	
Drop Point	DP-64	40° 35.559' N	110° 25.845' W	Parking and pumpkins
Drop Point	DP-65	40° 35.360' N	110° 26.445' W	Div R
Drop Point	DP-70	40° 34.405' N	110° 24.524' W	Div R new DP
Drop Point	DP-71	40° 33.125' N	110° 23.788' W	Div R DP
Drop Point	DP-81	40° 36.347' N	110° 26.685' W	
Drop Point	DP-83	40° 37.885' N	110° 26.014' W	Center of Long Park
Drop Point	DP-83	40° 37.885' N	110° 26.812' W	059 trail
Drop Point	DP-90	40° 36.041' N	110° 20.889' W	
Helibase	H-1	40° 31.569' N	110° 23.114' W	
Helibase	H-10	40° 31.533' N	110° 26.628' W	7,600 ft
Helibase	H-12	40° 33.778' N	110° 26.398' W	10,300 ft
Helibase	H-13	40° 33.745' N	110° 24.483' W	
Helibase	H-14	40° 34.362' N	110° 24.496' W	Type 2 & 3
Helibase	H-15	40° 35.316' N	110° 26.738' W	
Helibase	H-18	40° 32.778' N	110° 45.598' W	
Helibase	H-2	40° 34.790' N	110° 42.261' W	
Helibase	H-3	40° 34.940' N	110° 36.613' W	
Helibase	H-4	40° 35.488' N	110° 38.574' W	
Helibase	H-5	40° 32.778' N	110° 45.598' W	
Helibase	H-7	40° 34.475' N	110° 40.428' W	
Helibase	H-8	40° 31.944' N	110° 37.244' W	
Internet Access	Internet Access	40° 33.019' N	110° 41.772' W	
Repeater	COW - 65' AGL	40° 34.478' N	110° 43.877' W	Skilwater Repeater
Repeater	Repeater	40° 33.911' N	110° 18.942' W	Parking area
Repeater	CMD-8	40° 33.911' N	110° 18.942' W	
Repeater	Repeater	40° 34.979' N	110° 38.942' W	
Sling Site	Sling Site	40° 34.914' N	110° 42.178' W	Possible Div B sling site
Staging Area	Staging Area	40° 33.921' N	110° 19.179' W	Yellowstone Lodge; misc pump kit supplies



GB Team 7
9/17/2020 2243
Proj: NAD 1983 UTM Zone 12N

Bridge	Bridge
Drop Point	Drop Point
Fire Origin	Fire Origin
Helibase	Helibase
Incident Command Post	Incident Command Post
Internet Access	Internet Access
Repair Point	Repair Point
Repeater	Repeater
Sling Site	Sling Site
Staging Area	Staging Area
Water Source	Water Source
Value at Risk	Value at Risk
Division Break	Division Break
Uncontrolled Fire Edge	Uncontrolled Fire Edge
Contained Line	Contained Line
Active Burnout	Active Burnout
Temporary Flight Restriction	Temporary Flight Restriction
Wildfire Daily Fire Perimeter	Wildfire Daily Fire Perimeter