


**AIR OPS**

# East Fork


UT-ASF-100340

59,585 Acres as of 9/17/2020 0045

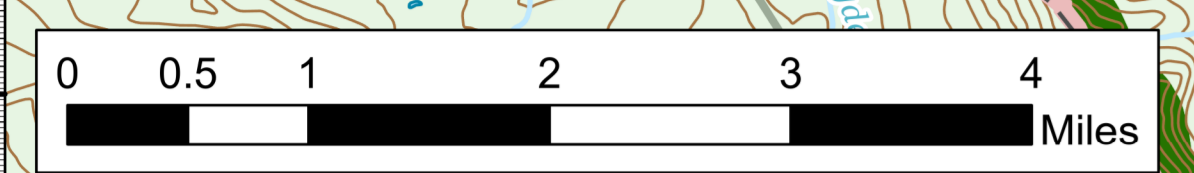
9/18/2020



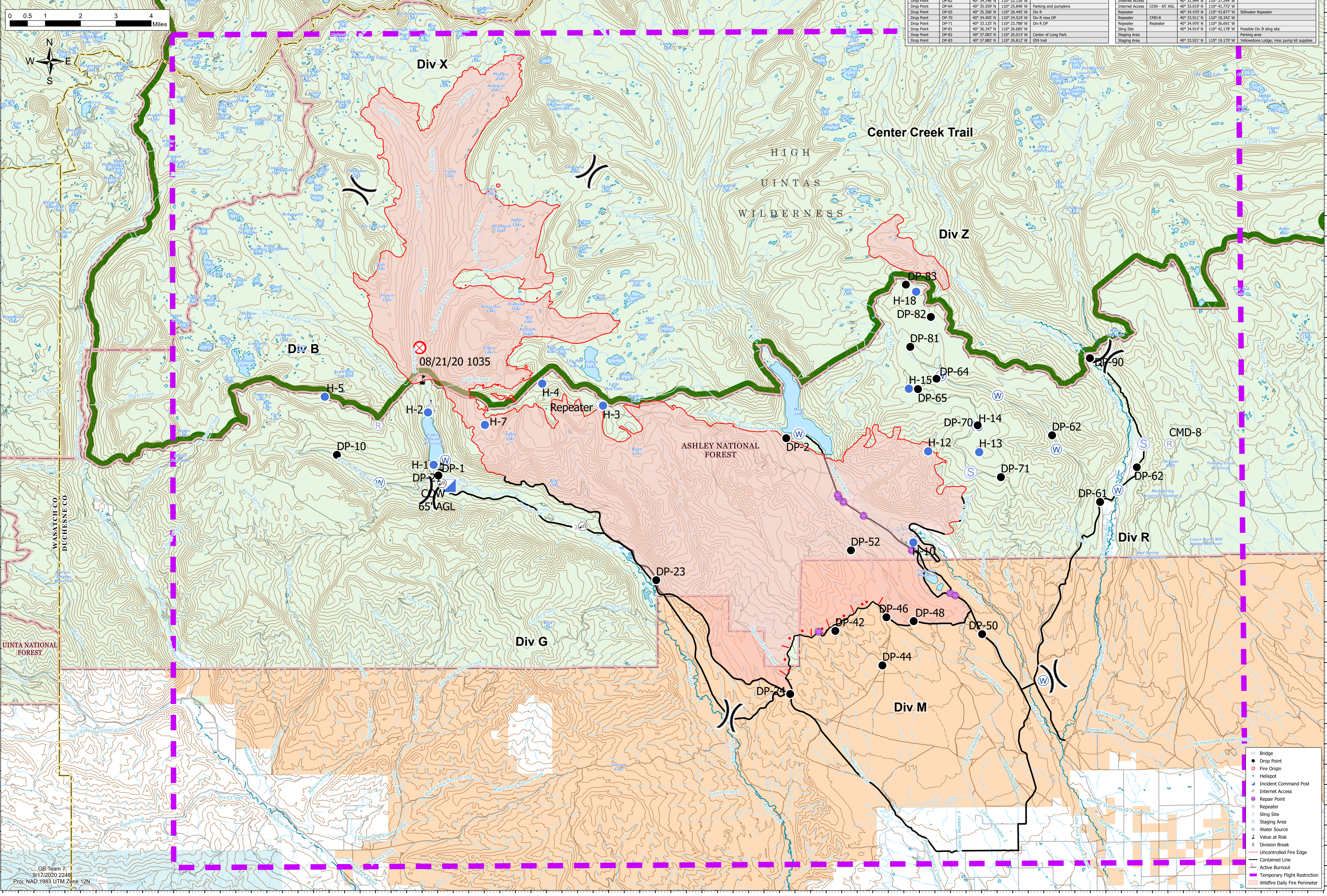
Regional Incident Management Team  
Great Basin  
Team 7



<https://argo.page.link/A7WfA7wif>



| Feature         | Label           | Lat           | Long           | Comments                                  |
|-----------------|-----------------|---------------|----------------|---|
| Drop Point      | DP-1            | 40° 33.237' N | 110° 41.930' W |   |
| Drop Point      | DP-10           | 40° 33.254' N | 110° 45.209' W |   |
| Drop Point      | DP-2            | 40° 34.116' N | 110° 39.703' W | FS guard station                          |
| Drop Point      | DP-21           | 40° 33.005' N | 110° 41.723' W | May need to move                          |
| Drop Point      | DP-23           | 40° 30.641' N | 110° 34.924' W |   |
| Drop Point      | DP-24           | 40° 27.822' N | 110° 30.621' W |   |
| Drop Point      | DP-32           | 40° 29.369' N | 110° 29.153' W |   |
| Drop Point      | DP-44           | 40° 28.512' N | 110° 27.646' W |   |
| Drop Point      | DP-46           | 40° 29.696' N | 110° 27.507' W |   |
| Drop Point      | DP-48           | 40° 29.598' N | 110° 26.632' W |   |
| Drop Point      | DP-50           | 40° 29.268' N | 110° 24.426' W | Junction of Bear Wallow and Moon Lake Rd  |
| Drop Point      | DP-52           | 40° 31.949' N | 110° 26.638' W |   |
| Drop Point      | DP-61           | 40° 32.500' N | 110° 20.596' W |   |
| Drop Point      | DP-62           | 40° 33.347' N | 110° 19.399' W |   |
| Drop Point      | DP-62           | 40° 34.146' N | 110° 22.126' W |   |
| Drop Point      | DP-64           | 40° 33.559' N | 110° 25.946' W | Parking and pumps                         |
| Drop Point      | DP-65           | 40° 35.306' N | 110° 26.445' W | Div R                                     |
| Drop Point      | DP-70           | 40° 34.405' N | 110° 24.524' W | Div R new DP                              |
| Drop Point      | DP-71           | 40° 33.125' N | 110° 23.788' W | Div R DP                                  |
| Drop Point      | DP-71           | 40° 36.347' N | 110° 26.685' W |   |
| Drop Point      | DP-82           | 40° 37.083' N | 110° 26.014' W | Center of Long Park                       |
| Drop Point      | DP-83           | 40° 37.885' N | 110° 26.812' W | 059 trail                                 |
| Drop Point      | DP-90           | 40° 36.041' N | 110° 20.889' W |   |
| Helibase        | H-1             | 40° 33.502' N | 110° 42.084' W |   |
| Helibase        | H-10            | 40° 31.533' N | 110° 26.626' W | 7,600 R                                   |
| Helibase        | H-12            | 40° 33.775' N | 110° 26.128' W |   |
| Helibase        | H-13            | 40° 33.745' N | 110° 24.483' W |   |
| Helibase        | H-14            | 40° 34.362' N | 110° 24.496' W | Type 2 & 3                                |
| Helibase        | H-15            | 40° 35.316' N | 110° 26.738' W | 10,300 R                                  |
| Helibase        | H-18            | 40° 37.705' N | 110° 26.480' W |   |
| Helibase        | H-2             | 40° 34.790' N | 110° 42.261' W |   |
| Helibase        | H-3             | 40° 34.949' N | 110° 36.613' W |   |
| Helibase        | H-4             | 40° 35.498' N | 110° 38.574' W |   |
| Helibase        | H-5             | 40° 35.185' N | 110° 45.596' W |   |
| Helibase        | H-7             | 40° 34.475' N | 110° 40.428' W |   |
| Internet Access | Internet Access | 40° 31.949' N | 110° 26.638' W |   |
| Internet Access | COW - 65' AGL   | 40° 33.019' N | 110° 41.772' W |   |
| Repeater        | CMD-8           | 40° 34.470' N | 110° 43.877' W | Stillwater Repeater                       |
| Repeater        | CMD-8           | 40° 33.911' N | 110° 18.342' W |   |
| Repeater        | Repeater        | 40° 34.976' N | 110° 36.691' W |   |
| Sling Site      | Sling Site      | 40° 34.914' N | 110° 42.176' W | Possible Div B sling site                 |
| Staging Area    | Staging Area    | 40° 34.914' N | 110° 42.176' W | Parking area                              |
| Staging Area    | Staging Area    | 40° 33.921' N | 110° 19.179' W | Yellowstone Lodge; misc pump kit supplies |



CB Team 7  
9/17/2020 2248  
Proj: NAD 1983 UTM Zone 12N

- Bridge
- Drop Point
- Fire Origin
- Helispot
- Incident Command Post
- Internet Access
- Repair Point
- Repeater
- Sling Site
- Staging Area
- Water Source
- Value at Risk
- Uncontrolled Fire Edge
- Contained Line
- Active Burnout
- Temporary Flight Restriction
- Wildfire Daily Fire Perimeter