

110°44'W

110°43'W

110°42'W

110°41'W

110°40'W

110°39'W

40°35'N

40°35'N

40°34'N

40°34'N

40°33'N

40°33'N

40°32'N

40°32'N


ROCK CREEK

East Fork


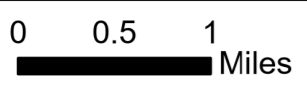
UT-ASF-100340

10/01/20

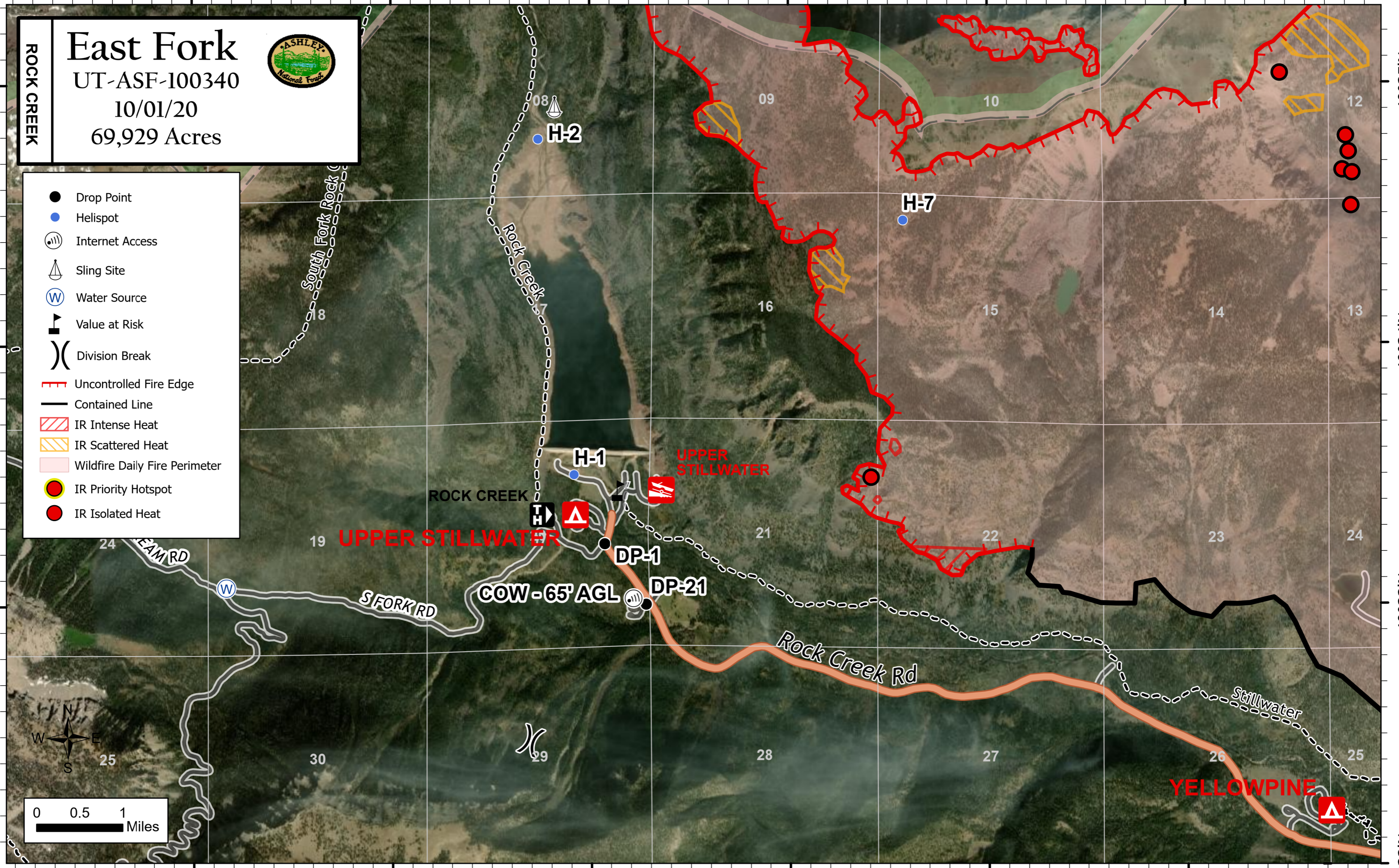
69,929 Acres



-  Drop Point
-  Helispot
-  Internet Access
-  Sling Site
-  Water Source
-  Value at Risk
-  Division Break
-  Uncontrolled Fire Edge
-  Contained Line
-  IR Intense Heat
-  IR Scattered Heat
-  Wildfire Daily Fire Perimeter
-  IR Priority Hotspot
-  IR Isolated Heat

0 0.5 1 Miles



110°44'W

110°43'W

110°42'W

110°41'W

110°40'W

110°39'W