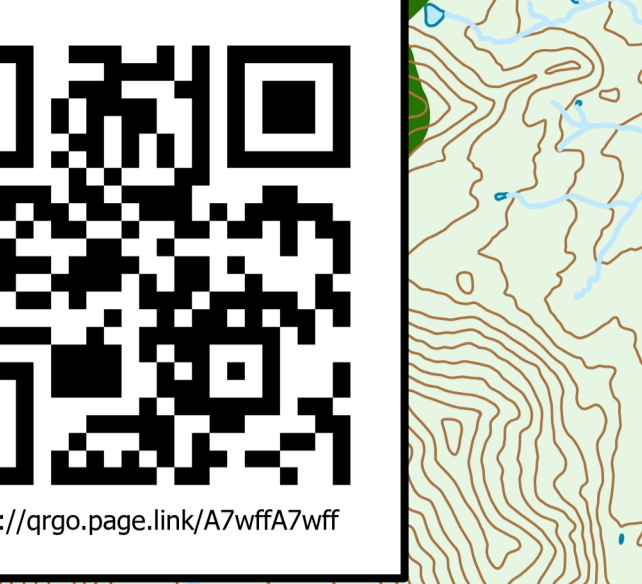


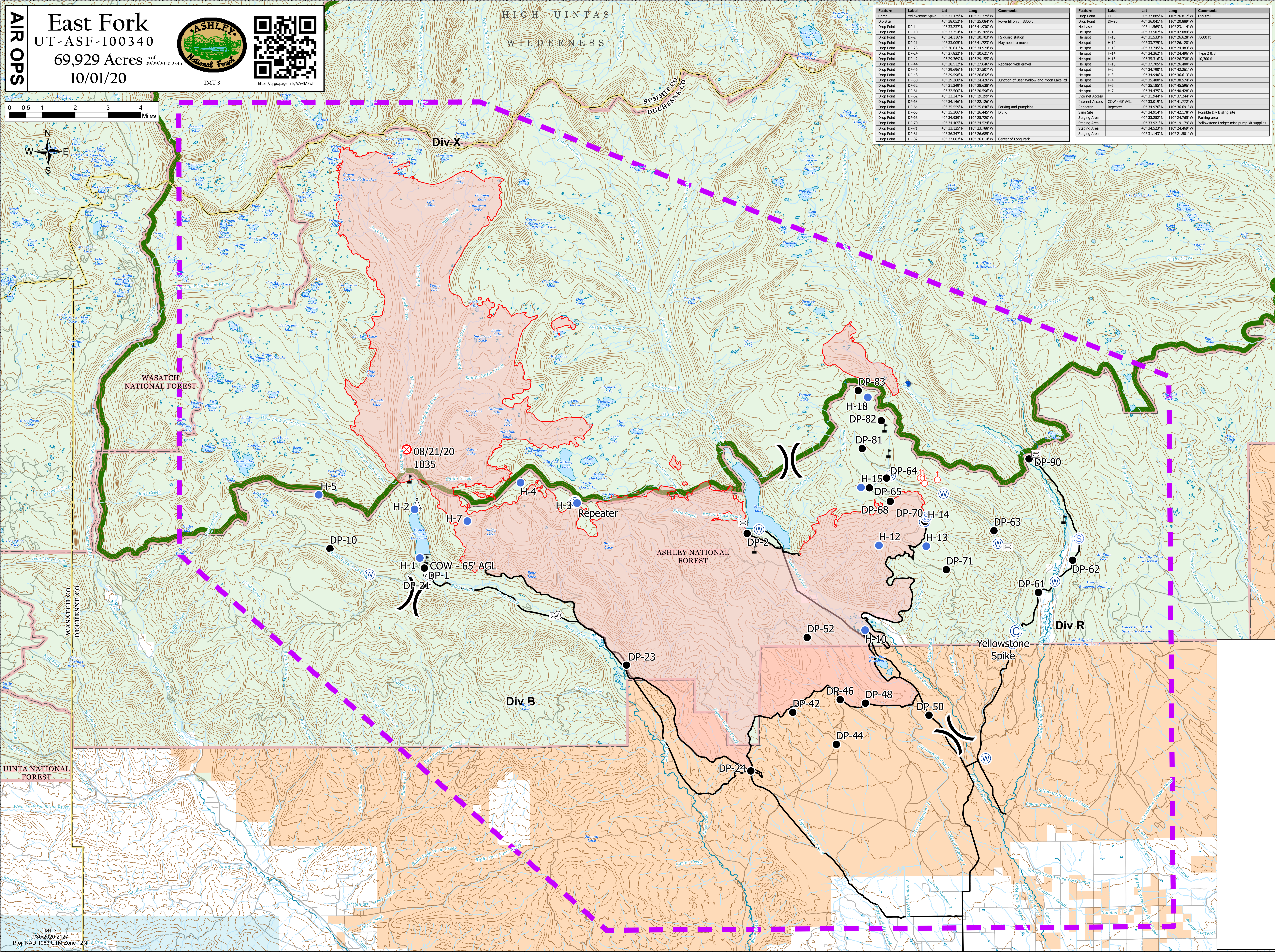
AIR OPS

East Fork
UT-ASF-100340
69,929 Acres as of 09/29/2020 2345
10/01/20



Feature	Label	Lat	Long	Comments
Yellowstone Spike	DP-83	40° 31.479' N	110° 21.379' W	
Dip Site	DP-80	40° 38.052' N	110° 25.084' W	Powerfill only; 8800ft
Drop Point	DP-1	40° 33.237' N	110° 41.030' W	
Drop Point	DP-10	40° 33.754' N	110° 45.209' W	
Drop Point	DP-2	40° 34.116' N	110° 30.703' W	F5 guard station
Drop Point	DP-21	40° 33.005' N	110° 41.723' W	May need to move
Drop Point	DP-23	40° 30.841' N	110° 38.924' W	
Drop Point	DP-24	40° 27.822' N	110° 30.621' W	
Drop Point	DP-42	40° 29.369' N	110° 29.155' W	
Drop Point	DP-44	40° 28.512' N	110° 27.646' W	Repaired with gravel
Drop Point	DP-45	40° 28.696' N	110° 27.937' W	
Drop Point	DP-48	40° 29.598' N	110° 26.632' W	
Drop Point	DP-50	40° 29.268' N	110° 24.426' W	Junction of Bear Wallow and Moon Lake Rd
Drop Point	DP-52	40° 31.349' N	110° 28.638' W	
Drop Point	DP-51	40° 33.500' N	110° 30.926' W	
Drop Point	DP-62	40° 33.347' N	110° 19.399' W	
Drop Point	DP-63	40° 34.146' N	110° 22.126' W	
Drop Point	DP-64	40° 35.559' N	110° 23.046' W	
Drop Point	DP-65	40° 35.306' N	110° 26.445' W	Parking and pumps
Drop Point	DP-68	40° 34.939' N	110° 25.720' W	Div R
Drop Point	DP-70	40° 34.405' N	110° 24.524' W	
Drop Point	DP-71	40° 33.125' N	110° 23.788' W	
Drop Point	DP-81	40° 36.347' N	110° 26.685' W	
Drop Point	DP-82	40° 37.083' N	110° 26.014' W	Center of Long Park

Feature	Label	Lat	Long	Comments
Drop Point	DP-83	40° 37.885' N	110° 26.812' W	059 trail
Drop Point	DP-90	40° 36.041' N	110° 20.889' W	
Helibase	H-1	40° 11.569' N	110° 23.114' W	
Helispot	H-10	40° 33.502' N	110° 42.084' W	
Helispot	H-12	40° 31.533' N	110° 26.628' W	7,600 ft
Helispot	H-13	40° 33.775' N	110° 26.129' W	
Helispot	H-14	40° 33.745' N	110° 24.483' W	
Helispot	H-15	40° 34.362' N	110° 24.496' W	Type 2 & 3
Helispot	H-18	40° 35.316' N	110° 26.738' W	10,300 ft
Helispot	H-19	40° 37.705' N	110° 26.480' W	
Helispot	H-2	40° 34.790' N	110° 42.261' W	
Helispot	H-3	40° 34.940' N	110° 36.613' W	
Helispot	H-4	40° 35.488' N	110° 38.574' W	
Helispot	H-5	40° 35.185' N	110° 45.596' W	
Helispot	H-7	40° 34.475' N	110° 40.438' W	
Internet Access	COW - 65' AGL	40° 33.019' N	110° 37.244' W	
Repeater	Repeater	40° 34.976' N	110° 35.691' W	
Sling Site	Sling Site	40° 34.914' N	110° 42.178' W	Possible Div B sling site
Staging Area	Staging Area	40° 33.525' N	110° 24.765' W	Parking area
Staging Area	Staging Area	40° 33.921' N	110° 19.179' W	Yellowstone Lodge; misc pump kit supplies
Staging Area	Staging Area	40° 34.523' N	110° 24.469' W	
Staging Area	Staging Area	40° 31.143' N	110° 21.501' W	



IMT 3
9/30/2020 2127
Proj: NAD 1983 UTM Zone 12N