


AIR OPS

East Fork


UT-ASF-100340

60,057 Acres as of 9/18/2020 2135

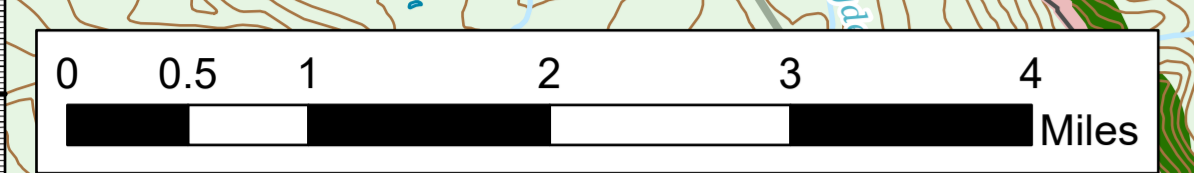
9/20/2020



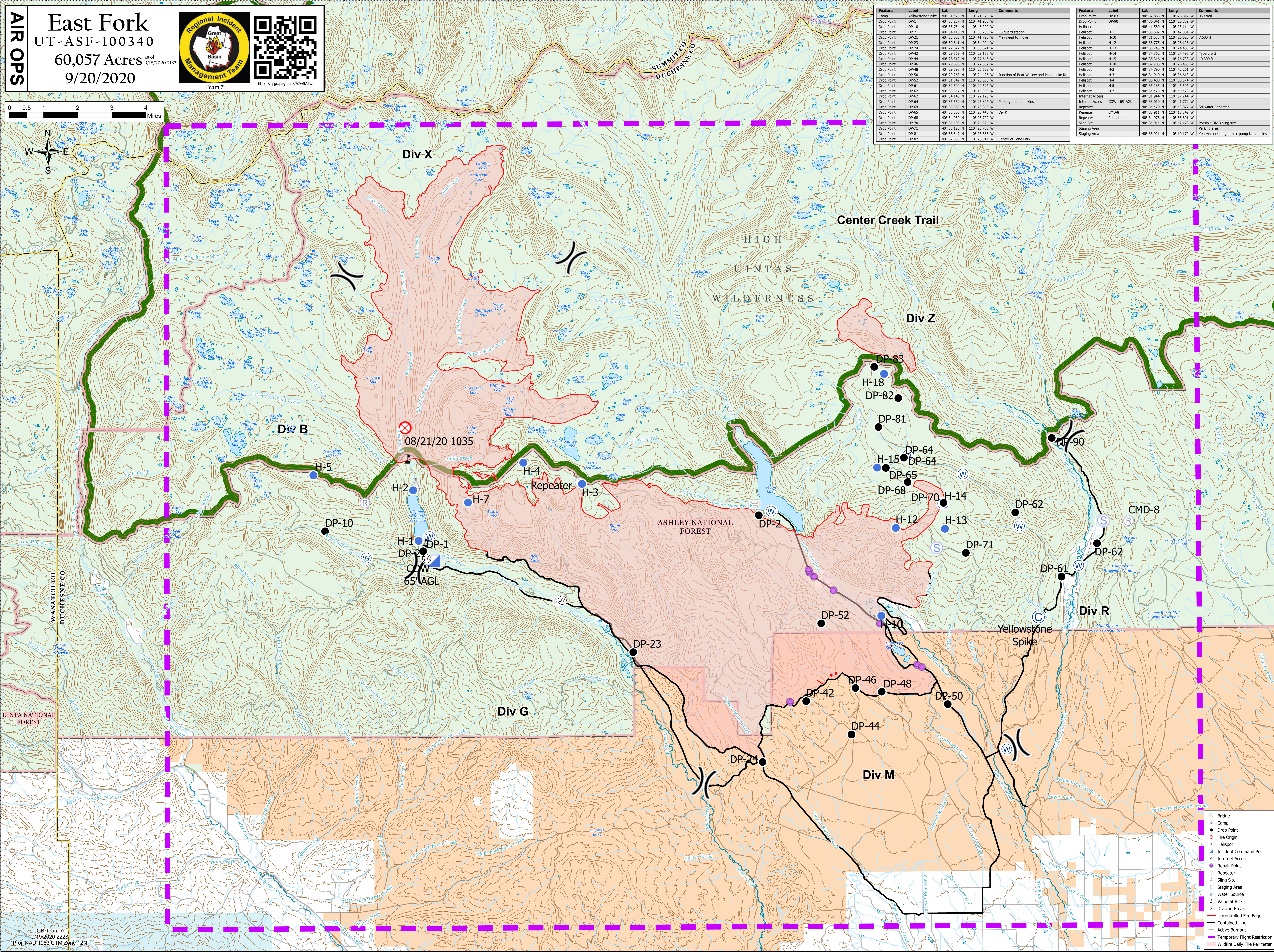
Regional Incident Management Team
Great Basin
Team 7



<https://argo.page.link/W7vFA7vft>



Feature	Label	Lat	Long	Comments
Camp	Yellowstone Spike	40° 31.479' N	110° 21.379' W	
Drop Point	DP-1	40° 33.237' N	110° 41.937' W	
Drop Point	DP-10	40° 33.754' N	110° 42.297' W	
Drop Point	DP-2	40° 34.110' N	110° 30.703' W	FS guard station
Drop Point	DP-21	40° 33.005' N	110° 41.723' W	May need to move
Drop Point	DP-23	40° 30.641' N	110° 34.924' W	
Drop Point	DP-24	40° 23.822' N	110° 30.621' W	
Drop Point	DP-42	40° 29.369' N	110° 29.155' W	
Drop Point	DP-44	40° 28.512' N	110° 27.645' W	
Drop Point	DP-46	40° 29.696' N	110° 27.507' W	
Drop Point	DP-48	40° 29.598' N	110° 26.632' W	
Drop Point	DP-50	40° 29.268' N	110° 24.426' W	Junction of Bear Wallow and Moon Lake Rd
Drop Point	DP-52	40° 31.349' N	110° 28.638' W	
Drop Point	DP-61	40° 32.500' N	110° 20.596' W	
Drop Point	DP-62	40° 33.942' N	110° 19.397' W	
Drop Point	DP-62	40° 34.146' N	110° 22.126' W	
Drop Point	DP-64	40° 35.559' N	110° 25.846' W	Parking and pumps
Drop Point	DP-64	40° 35.563' N	110° 26.840' W	
Drop Point	DP-65	40° 35.300' N	110° 26.445' W	Div R
Drop Point	DP-68	40° 34.939' N	110° 25.720' W	
Drop Point	DP-70	40° 34.405' N	110° 24.524' W	
Drop Point	DP-71	40° 33.125' N	110° 23.788' W	
Drop Point	DP-81	40° 36.347' N	110° 26.685' W	
Drop Point	DP-82	40° 37.083' N	110° 26.014' W	Center of Long Park
Drop Point	DP-83	40° 31.479' N	110° 21.379' W	
Drop Point	DP-90	40° 36.041' N	110° 26.889' W	059 trail
Helispot	H-1	40° 33.503' N	110° 23.114' W	
Helispot	H-10	40° 33.533' N	110° 26.024' W	7,600 ft
Helispot	H-12	40° 33.775' N	110° 26.128' W	
Helispot	H-13	40° 33.740' N	110° 24.483' W	
Helispot	H-14	40° 34.362' N	110° 24.498' W	Type 2 & 3
Helispot	H-15	40° 35.316' N	110° 26.738' W	10,300 ft
Helispot	H-18	40° 37.705' N	110° 26.480' W	
Helispot	H-2	40° 34.791' N	110° 42.261' W	
Helispot	H-3	40° 34.940' N	110° 36.613' W	
Helispot	H-4	40° 35.488' N	110° 38.574' W	
Helispot	H-5	40° 35.185' N	110° 46.596' W	
Helispot	H-7	40° 34.472' N	110° 40.428' W	
Internet Access	COW - 65' AGL	40° 33.019' N	110° 37.244' W	
Repeater	CMD-8	40° 34.470' N	110° 43.873' W	Stillwater Repeater
Repeater	CMD-8	40° 33.911' N	110° 18.342' W	
Repeater	CMD-8	40° 34.976' N	110° 36.691' W	
Sling Site		40° 34.914' N	110° 42.178' W	Possible Div B sling site
Staging Area		40° 34.914' N	110° 42.178' W	Feeding area
Staging Area		40° 33.921' N	110° 18.179' W	Yellowstone Lodge; misc pump kit supplies



CB Team 7
9/19/2020 2228
Proj: NAD 1983 UTM Zone 12N

Bridge	Bridge
Camp	Camp
Drop Point	Drop Point
Fire Point	Fire Point
Fire Origin	Fire Origin
Helispot	Helispot
Incident Command Post	Incident Command Post
Internet Access	Internet Access
Repair Point	Repair Point
Repeater	Repeater
Sling Site	Sling Site
Staging Area	Staging Area
Water Source	Water Source
Value at Risk	Value at Risk
Division Break	Division Break
Uncontrolled Fire Edge	Uncontrolled Fire Edge
Contained Line	Contained Line
Active Burnout	Active Burnout
Temporary Flight Restriction	Temporary Flight Restriction
Wildfire Daily Fire Perimeter	Wildfire Daily Fire Perimeter