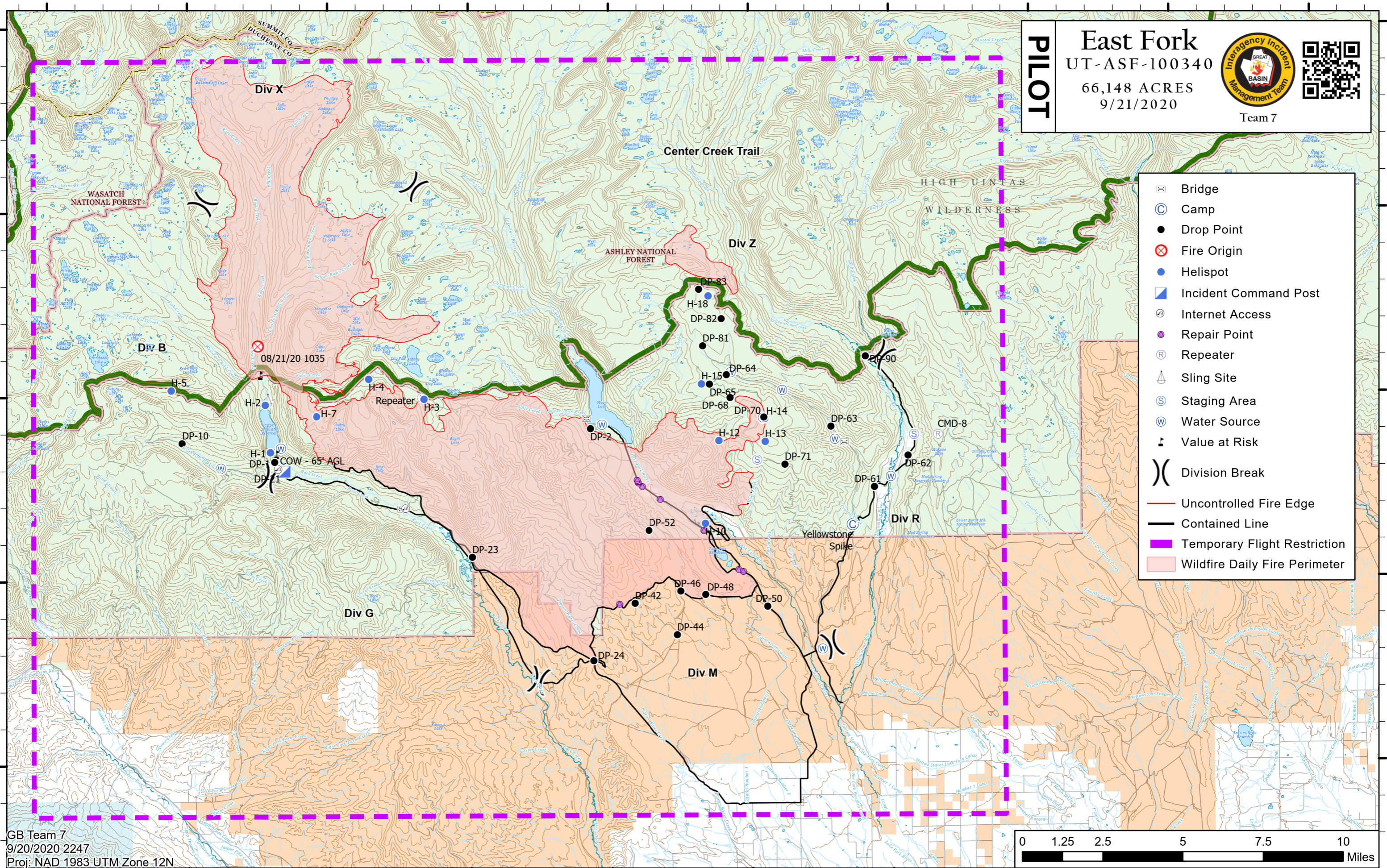


110°50'W 110°45'W 110°40'W 110°35'W 110°30'W 110°25'W 110°20'W 110°15'W 110°10'W 110°5'W



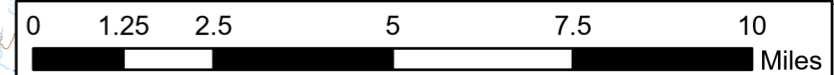
**PILOT**

**East Fork**  
 UT-ASF-100340  
 66,148 ACRES  
 9/21/2020

Team 7

- Bridge
- Camp
- Drop Point
- Fire Origin
- Helispot
- Incident Command Post
- Internet Access
- Repair Point
- Repeater
- Sling Site
- Staging Area
- Water Source
- Value at Risk
- Division Break
- Uncontrolled Fire Edge
- Contained Line
- Temporary Flight Restriction
- Wildfire Daily Fire Perimeter

GB Team 7  
 9/20/2020 2247  
 Proj: NAD 1983 UTM Zone 12N



110°50'W 110°45'W 110°40'W 110°35'W 110°30'W 110°25'W 110°20'W 110°15'W 110°10'W 110°5'W

Feature	Label	Lat	Long	Comments
Camp	Yellowstone Spike	40° 31.479' N	110° 21.379' W	
Drop Point	DP-21	40° 33.005' N	110° 41.723' W	May need to move
Drop Point	DP-2	40° 34.116' N	110° 30.703' W	FS guard station
Drop Point	DP-23	40° 30.641' N	110° 34.924' W	
Drop Point	DP-50	40° 29.268' N	110° 24.426' W	Junction of Bear Wallow and Moon Lake Rd
Drop Point	DP-48	40° 29.598' N	110° 26.632' W	
Drop Point	DP-90	40° 36.041' N	110° 20.889' W	
Drop Point	DP-24	40° 27.822' N	110° 30.621' W	
Drop Point	DP-46	40° 29.696' N	110° 27.507' W	
Drop Point	DP-52	40° 31.349' N	110° 28.638' W	
Drop Point	DP-62	40° 33.347' N	110° 19.399' W	
Drop Point	DP-61	40° 32.500' N	110° 20.596' W	
Drop Point	DP-81	40° 36.347' N	110° 26.685' W	
Drop Point	DP-10	40° 33.754' N	110° 45.209' W	
Drop Point	DP-1	40° 33.237' N	110° 41.930' W	
Drop Point	DP-42	40° 29.369' N	110° 29.155' W	
Drop Point	DP-44	40° 28.512' N	110° 27.646' W	Repaired with gravel
Drop Point	DP-65	40° 35.306' N	110° 26.445' W	Div R
Drop Point	DP-64	40° 35.559' N	110° 25.846' W	Parking and pumpkins
Drop Point	DP-82	40° 37.083' N	110° 26.014' W	Center of Long Park
Drop Point	DP-83	40° 37.885' N	110° 26.812' W	059 trail
Drop Point	DP-63	40° 34.146' N	110° 22.126' W	
Drop Point	DP-71	40° 33.125' N	110° 23.788' W	
Drop Point	DP-70	40° 34.405' N	110° 24.524' W	
Drop Point	DP-68	40° 34.939' N	110° 25.720' W	
Helibase		40° 11.569' N	110° 23.114' W	
Helispot	H-1	40° 33.502' N	110° 42.084' W	
Helispot	H-2	40° 34.790' N	110° 42.261' W	
Helispot	H-4	40° 35.488' N	110° 38.574' W	
Helispot	H-5	40° 35.185' N	110° 45.596' W	
Helispot	H-10	40° 31.533' N	110° 26.628' W	7,600 ft
Helispot	H-15	40° 35.316' N	110° 26.738' W	10,300 ft
Helispot	H-18	40° 37.705' N	110° 26.480' W	
Helispot	H-7	40° 34.475' N	110° 40.428' W	
Helispot	H-3	40° 34.940' N	110° 36.613' W	
Helispot	H-13	40° 33.745' N	110° 24.483' W	
Helispot	H-12	40° 33.775' N	110° 26.128' W	
Helispot	H-14	40° 34.362' N	110° 24.496' W	Type 2 & 3
Internet Access		40° 31.944' N	110° 37.244' W	
Internet Access	COW - 65' AGL	40° 33.019' N	110° 41.772' W	
Repeater	CMD-8	40° 33.911' N	110° 18.342' W	
Repeater	Repeater	40° 34.976' N	110° 36.691' W	
Sling Site		40° 34.914' N	110° 42.178' W	Possible Div B sling site
Staging Area				Parking area
Staging Area		40° 33.921' N	110° 19.179' W	Yellowstone Lodge; misc pump kit supplies